

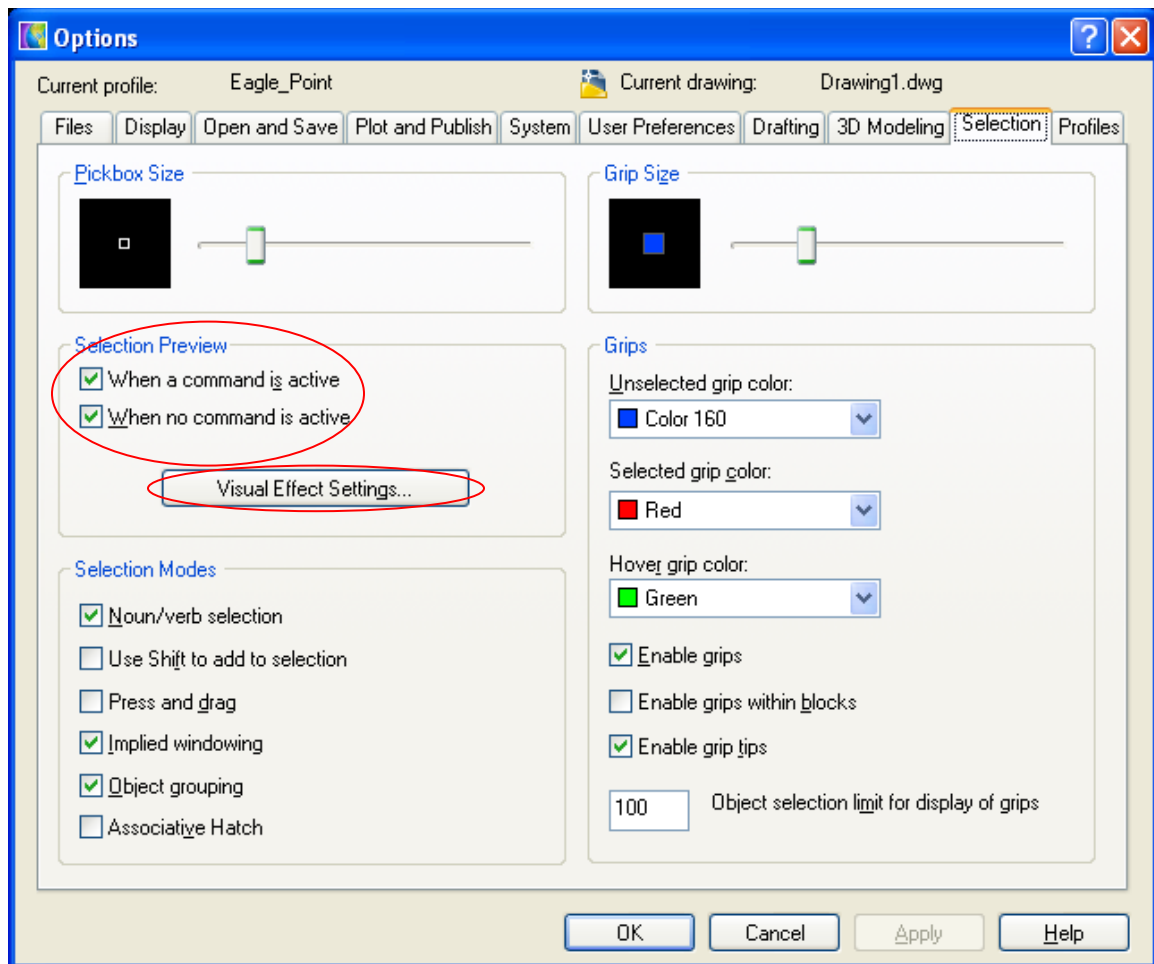
Object Highlighting & Layer Isolate Settings

AutoCAD has a feature where Objects are highlighted when the pickbox cursor rolls over them, providing a preview of which object will be selected when you click. This does slow down a computer and can sometimes be a bother.

If you would like to change the settings go to:

Application Menu... Options... Selection

Many users like to uncheck “When no command is active” and leave the other one checked. That way objects are object highlighting occurs only after you’ve started a command, such as move, copy, rotate, etc. Some like to uncheck both of them.



Click the Visual Effects Settings... to change how the highlighted object is displayed.

The Layer Isolate command can be set to either Fade & lock layers or to Turn off or Freeze layers.

To modify the settings use click Home... Layers... Layer Properties...Click Settings



A common choice is to have the layers turned off:

