

Overview: Export Civil 3D data in a LandXML format for use in staking out a construction project or transferring to another design tool.

Software: AutoCAD Civil 3D 2016, NRCS C3D 2016 template

Notation: Button to Press *Displayed Text* **Icon** Action {Text to Enter} Menu Item...

Prerequisite

A C3D design that includes points, planned surfaces, alignments, profiles, or corridors.

Exporting LandXML items from Civil 3D

1. Click *Output... Export... Export to LandXML...* to bring up the Export box.
2. Click Collapse all groups
3. Click Uncheck all items

Points: When a LandXML **point group** is exported it will contain the individual points and the groups.

4. Expand *Point Groups*.
5. Checkmark *Survey Control* and *Staking*.

Surfaces: When a LandXML **surface** is exported it will contain the points, faces, and breaklines of the surface.

6. Expand *Surfaces*
7. Checkmark *Core Trench, Embankment*

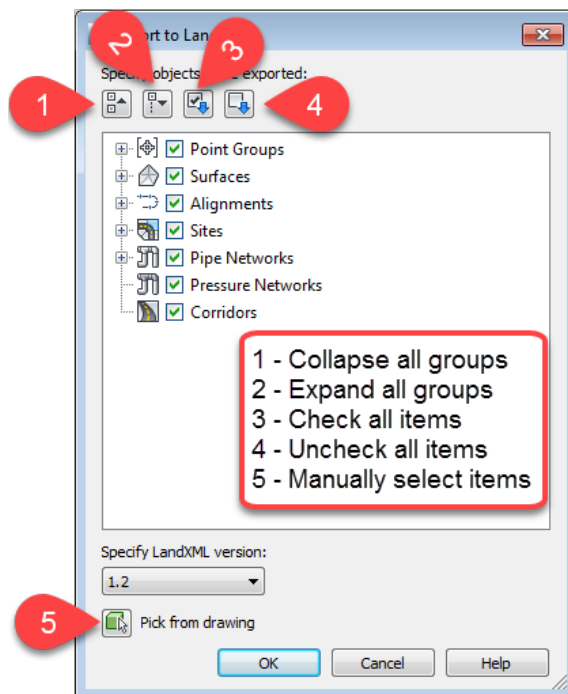
Alignments: When a LandXML **alignment** is exported it will contain the alignment and the profile data associated with the alignment. A profile view can be created from the imported alignment/profile data.

8. Expand *Alignments*
9. Checkmark the Desired Centerline Alignments. E.g. *AuxSpill, CL Pipe, CL Dam*.

Corridors: When a LandXML **corridor** is exported it will contain the alignment, planned surface, and profile data associated with the alignment. A profile view can be created from the alignment & profile data. Sub-assemblies, sample lines, and sample line groups are not supported by LandXML v1.2.

10. Expand *Corridors*
11. Checkmark the Desired Corridors. E.g. *WW Main*.
12. Click OK.
13. Specify a file name.
14. Click Save.

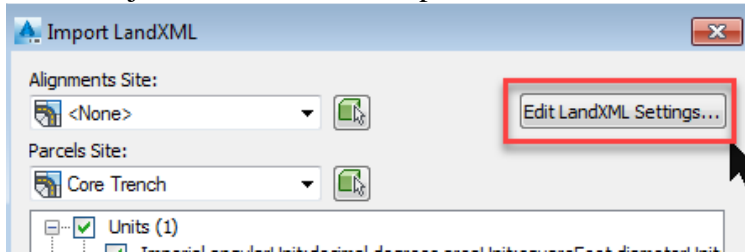
Import the xml file into a new drawing to verify the data.



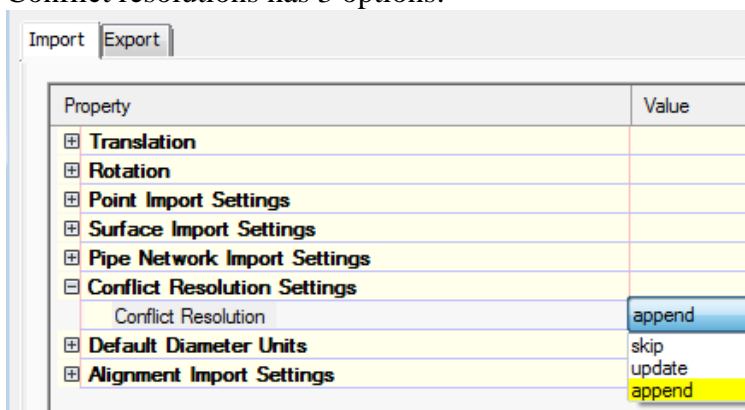
Import Options for LandXML in Civil 3D 2016

Insert... Import... LandXML... to bring up the Import box.

When importing LandXML items into C3D the **Edit LandXML Settings..** allows the user to adjust how the data is imported.



Conflict resolutions has 3 options:



Skip: does not place the imported item into the drawing.

Update: replaces existing named items

Append: places another name of the item into the drawing with (1) after it.

Other Data Transfer tools


Toolspace>Toolbox...

Reports Manager... (e.g. Alignment, Corridor, etc)

Civil 3D 2016 Productivity Pack 1... (e.g. Bentley software)

Subscription Extension Manager... (e.g. GENIO format)

Trimble Link...Export to Trimble Survey Controller/Trimble Access...

Note: If the Toolbox reports don't work, use the Toolbox Editor  to redirect the command, replacing %ReportDir%\xsl with *C:\ProgramData\Autodesk\C3D 2016\enu\Data\Reports\xsl*.