

Alaska Farm Bill Program Requirements FY23

For all program rules refer to Title 440 Part 530 Working Lands Conservation Programs Manual. For all definitions refer to Title 440 Part 502 Terms and Abbreviations Common to All Programs.

Throughout this document the term “practices” refers to both conservation practices and activities.

Farm Bill Programs this document applies to:

EQIP – Environmental Quality Incentives Program

Designed to address problems on a farm/ranch/managed forest. Take your site inventory and evaluation along with the conservation plan to determine how to use financial incentives to improve the resource concerns on the landscape.

EQIP CIC – Conservation Incentive Contract

EQIP CIC is to incentivize additional conservation by addressing at least one priority resource concern. EQIP CIC blends the EQIP “classic” element of implementing practices with the CSP element of adopting enhancements that support increased levels of conservation.

CSP – Conservation Stewardship Program

CSP encourages producers to reach a higher level of conservation across their entire operation. The base level of conservation is documented, then practices and activities are used to enhance the resources.

RCPP – Regional Conservation Partnership Program

RCPP-EQIP (Farm Bill 14 agreements) and Land Management and Rental (LMR) Contracts (Farm Bill 18 agreements) help address resource concerns related to RCPP project specific goals. Refer to the Alaska RCPP website for a current list of RCPP agreements and section 530.500 for policy.

Animal Feeding Operation (AFO)

The definition of an AFO is housed in 440-502 Subpart A and is as follows:

- An agricultural operation where animals are kept and raised in confined situations.
- An AFO is a lot or facility (other than an aquatic animal production facility) where both of the following conditions are met:
 - Animals have been, are, or will be stabled or confined and fed or maintained for a total of 45 days or more in any 12-month period.
 - Crops, vegetation, forage growth, or post-harvest residues are not sustained in the normal growing season over any portion of the lot or facility.

CCC-902 – Farm Operating Plan

Each person or legal entity applying for and participating in NRCS programs must file the CCC-902 and be determined eligible to receive program benefits subject to the applicable payment eligibility and payment limitation requirements.

Refer to the Alaska Standard Operating Procedure on how to verify the 902 is in determined status and filing requirements in DMS.

Contract Maps (CIN Maps)

- To ensure your CIN maps are within policy, make sure your maps include everything listed below. Map requirements can be found in the National Planning Procedures Handbook (NPPH) NPPH 600.31 A(1) and 600.31 A(2).
 - Title of the map should include the EQIP contract number
 - Map Header
 - Clients Name
 - Borough/State
 - Date the map was prepared
 - Prepared By
 - Information needed to locate the planning area (Farm/Tract and coordinates, address, PLSS section, etc. as needed)
 - Map legend using NRCS map symbols
 - North Arrow
 - Scale of map
 - Boundary lines for the Planned Land Units (PLU's)
 - PLU's Labeled with: Tract, Field, Land Use, Modifiers, Acres
 - Location of planned conservation practices that are less than the full footprint of the PLU using the NRCS map symbols. See options below for pancaked practices below.
 - CINs Labeled: Other items (Practice Name/Code, Planned amount, Date) are optional. It is important that symbology remain visible and not hidden behind CIN labels.
 - Land units in contract map may include fewer land units than Plan Map.
 - For example if the original plan map included practices on 10 land units, but the contracted practices are planned entirely within 2 land units, the contract map is required to include a minimum of the 2 contracted land units.
 - Options for pancaked practices:
 - Edit the legend so the map symbol shown on top reflects multiple practices
 - Add call out boxes to map, labeling pancaked practices
 - Filter pancaked practices, print multiple maps
 - Create maps in ArcGIS where you have more control over symbology.

Conservation Planning Activity (CPA), Design and Implementation Activity (DIA), Conservation Evaluation and Monitoring Activity (CEMA) *(formally referred as Conservation Activity Plans or CAPs)*

- Follow instructions in National Instruction 440 Part 320 for planning and contracting CPAs, DIAs, and CEMAs.
- CPAs, DIAs, CEMAs include planning, design, implementation, and monitoring tasks that may be carried out by technical service providers (TSP) or other third-party service providers (Providers) for NRCS conservation program purposes.
- Refer to section III of the Alaska Field Office Tech Guide (FOTG) for technical criteria.
- NRCS must determine whether the use of a CPA, DIA, and/or CEMA is necessary and efficient way to provide a client with technical assistance. Once it is determined necessary NRCS will determine which of the activities will be planned to meet the identified objective – utilize Exhibit 320.11 in the National Instruction.
- Contract Options
 - Stand Alone Option—NRCS can schedule a CPA, DIA, and CEMA as the only contract item.
 - Pairing Option—NRCS may pair certain combinations of conservation activities together, or pair an activity with a conservation practice in a contract as follows:
 - A CPA can be paired with a DIA.

- A DIA can be paired with a conservation practice(s).
 - A CEMA can also be scheduled with either of the above combinations or can be included with a “stand alone” CPA, DIA, or conservation practice contract.
 - CPA, DIA, and conservation practices cannot be grouped together in the same contract, unless the CPA is to develop a plan for another resource concern, land use, etc., unrelated to the DIA and conservation practices also included in the contract.
- NRCS requires contract participants receiving financial assistance funds for the above activities to use a certified technical service provider (TSP) to develop the plan and design activities. Refer to 530.31F and subpart E, section 530.40C for additional information related to TSP assistance using either financial or technical assistance funds. (530.403A)

Commenced (Started) (530.403H.(3), *Contract Appendices*)

Practices started before the contract is obligated are ineligible for financial support unless NRCS has approved an early start waiver.

- A practice will be considered commenced (started) when a practice has been physically started on the ground.
- A participant may not engage the services of a certified technical service provider (TSP) before this contract is executed by NRCS. Under no circumstances will NRCS reimburse participants for TSP services obtained prior to approval of such reimbursement under the contract.
 - A CPA, DIA, CEMA is considered commenced (started) when a TSP/Provider is hired, or services are obtained.
 - For entities that have a staff member who is also a TSP, commencement is considered when any work is performed.

Participants are required to complete a conservation practice or activity within the first 12 months of the contract.

- If participant cannot complete any practices within 12 months of the obligation date for reasons out of their control, they may request a waiver from the State Conservationist.
 - NRCS planners will utilize the Alaska 12 Month Completion Waiver SOP.
- Commencing a practice is not a substitution for completion of a practice within 12 months of obligation.

Comprehensive Nutrient Management Plan (CNMP) – EQIP Specific (530.405A and 530.403D)

If an EQIP schedule of operations includes an animal waste storage or treatment facility on an animal feeding operation (AFO), the participant must have a NRCS-approved comprehensive nutrient management plan (CNMP) prior to implementation of any waste storage or treatment facility or associated nutrient management activities. The CNMP will account for resource concerns and conservation practices and activities planned for an AFO associated with storing, treating, land applying, or handling (transferring) of animal waste or organic byproducts, such as animal carcasses. The requirement to develop a comprehensive nutrient management plan (CNMP) applies only to operations where animals are kept and raised in confined situations.

Controlled Substances (530.20E)

A producer is ineligible for USDA program benefits if engaged in controlled substance activities, including growing marijuana or unauthorized hemp production on any part of their agricultural operation in violation of Federal law, even if the requested assistance does not relate to the part of the agricultural operation used for the unlawful production of the controlled substance.

Cost Estimates

Protracts automatically rounds practice extents to the tenth. Therefore, any practice extent less than 0.1 shall be rounded up to 0.1 in cost estimator tools. *i.e. practice extent is 0.03 acres, enter 0.1 acres in the cost estimator tool* {note – ProTracts allows for payment of the actual amount installed}

Early Start Waiver (530.23B, 530.403)

Applicants must request an Early Start Waiver, clearly communicating the specific and meritorious circumstances for which the waiver is needed. Conservation practices or activities started prior to approval of the waiver are ineligible for payment. Applicants must maintain eligibility, or the applicant will be ineligible to receive payments. An approved waiver does not guarantee contract approval. NRCS planners will utilize the Alaska Early Start Waiver SOP.

Eligibility

NRCS staff must have a working knowledge of agency policy governing program eligibility and exercise due diligence in verification of eligibility of participants, land, and other requirements to approve applications, obligations, payments, and other related program benefits.

All Programs - Producer Eligibility – see section 530.20

- Must have signature authority
- Must be engaged in agricultural production or forestry management
- Utilize the Conservation Program Checklist (530.142E) as appropriate.

EQIP – See section 530.402

- Producer Eligibly
- Land Eligibility
- Resource Concern Eligibility – at least one natural resource concern must be identified and addressed with an eligible conservation practice or activity.

EQIP – CIC – See section 530.408

- Refer to EQIP section 530.402 for eligibility
- Must implement, adopt, manage, and maintain incentive practices that effectively address at least one priority resource concern within a State-identified HPA.

CSP – See section 530.302

- Producer Eligibility
- Land Eligibility
 - A contract application must include all eligible land associated with an applicant’s agricultural or NIPF operation, except as identified in section 530.302D(4)
 - Cropland eligibility
 - Land used for crop production on or after December 20, 2018, that had not been planted, considered to be planted, or devoted to crop production for at least 4 of the 6 years (for exceptions see 530.302 D).
- Stewardship Threshold Eligibility

RCPP – Land Management and Rental Producer Contracts – See section 530.502

- Producer Eligibility
- Land Eligibility
- Project and Activity Eligibility

Forest Management Plan (FMP) – EQIP Specific

If an EQIP schedule of operations includes forest-related conservation practices or activities on forest land, the participant must implement conservation practices and activities consistent with an approved forest management plan. A forest management plan is a site-specific plan that is prepared by a professional resource manager, in consultation with the participant, and is based on criteria approved by the State conservationist. Forest management plans include a forest stewardship plan as specified in section 5 of the Cooperative Forestry Assistance Act of 1978 (16 U.S.C Section 2103a), another practice plan approved by the NRCS State forester, Alaskan Division of Forestry, Indian Tribe Forester, or another plan determined appropriate by the State conservationist (530.405A(3)).

At a minimum approved forest management plans must meet the criteria of Title 190, National Forestry Manual, Part 536, “Conservation Planning”

A copy of the FMP shall be provided to NRCS by the participant and kept on file at the local NRCS office. It is the responsibility of the participant to provide NRCS updated copies of the plan if it changes.

Review and acceptance of the FMP shall be done by the NRCS State Forester. Notes will be made in the Conservation Assistance Notes regarding the review and acceptance.

Grazing Improvement Objectives

EQIP applications with the resource concern ‘Degraded Plant Condition’ will document the resource concern via one or more of the following inventory, measurement, and assessment tools:

- Pastureland:
 - Pasture Condition Score Evaluation (PCS)
- Rangeland:
 - Interpreting Indicators of Rangeland Health
 - Similarity Index
 - Apparent Trend

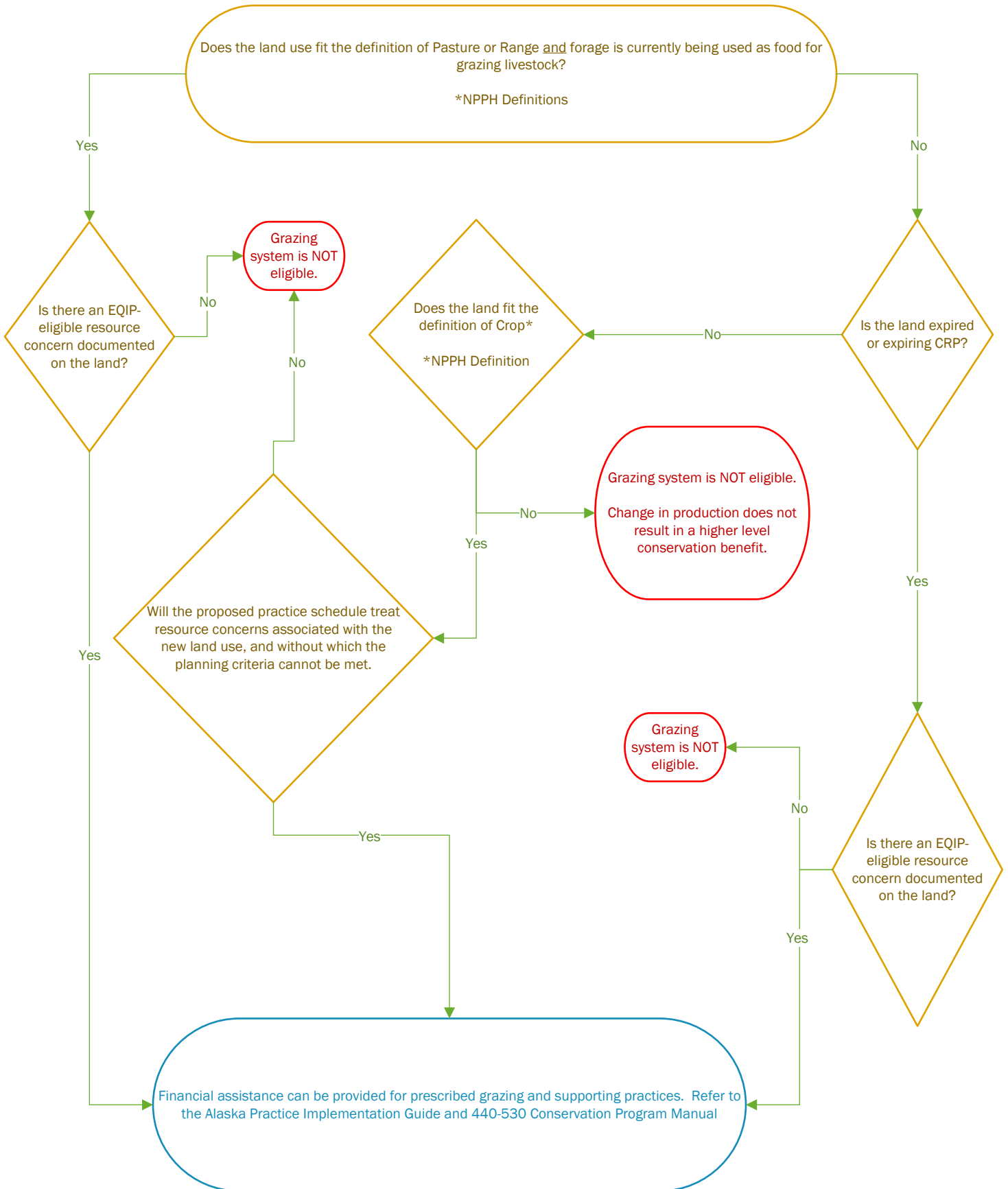
Grazing Practices – EQIP Specific (530.403A, 530.403H.(1), National Range and Pasture Manual)

If an EQIP schedule of operations includes grazing-related structural or non-structural conservation practices or activities on grazed land, the participant must implement practice 528 Prescribed Grazing consistent with an approved grazing management plan. Conservation practice 528 must be included in the conservation plan and may be part of the EQIP application.

Utilize Title 190 Part 520 – National Range and Pasture Manual.

Utilize the following flow chart to determine if prescribed grazing and supporting practices are eligible.

Grazing Land Practices



Hemp (530.21D)

The following apply to hemp producers in order to be eligible for NRCS financial assistance programs:

- Hemp producers must be licensed or authorized under an USDA approved plan or through AMS.
- Hemp producers must have a valid license or authorization number recorded with FSA.
- NRCS will utilize applicable business tools to determine if the producer is authorized to produce hemp. FSA is the official record holder of eligible hemp producers.

Note: Hemp information can be found at <https://www.ams.usda.gov/rules-regulations/hemp>

Marijuana is not covered under this provision – see “Controlled Substances” above.

Irrigation History – EQIP Specific (530.402C)

Irrigation practices/activities that improve water conservation may only be planned on land that was been irrigated for at least 2 out of the last 5 years (*for exceptions see 530.402 C*)

When land must meet the irrigation history requirement, it is the responsibility of the applicant to provide NRCS documentation.

NRCS will upload documentation to DMS under the category “Other-Agreement”

Examples of acceptable documentation include:

- Written self-certification of the irrigation history, by year, and crops produced on the land with yields indicating irrigation
- Aerial photography coverage showing evidence of irrigation history on the property
- Copies of FSA records such as aerial compliance photography, Farm Acreage Report, Production History Report, and Risk Management Insurance
- Water rights certificate, water rights maps and/or well or pumping plant permits issued by a federally recognized Tribe, State, or Federal agency
- Municipal water bills or fuel bills or maintenance records documenting the use of an irrigation system with the presence of an operable irrigation system or reliable water source indicating the ability to irrigate
- Irrigation water management plans, water use reports or other evidence of implementation of irrigation related practices
- Verbal confirmation from the participant, aerial imagery, existing irrigation infrastructure (including garden hoses or watering cans), and evidence of irrigation activities. *NRCS would document this via photos and field notes (combine into one pdf) and upload to DMS.*

Least Cost Alternative / Payment Scenarios (530.13, 530.50, 502.0)

The NRCS planner is responsible for identifying conservation practices that will treat the identified resource concern. Treatment options must meet NRCS standards and specifications, address the identified resource concern, and be approved by an individual with NRCS job approval authority.

The planner will present the participant with a suite of alternatives to address the identified resource concern. While planners and engineering staff should work with the participant in selecting a treatment option that will address the identified resource concern in the most cost-effective manner, the least-cost principle applies only to the payment scenario chosen and does not limit the conservation practice the participant can select.

Cost effectiveness is defined as: The least costly option for achieving a given set of conservation objectives to address an identified natural resource concern. (502.0)

Once the client has chosen what practices to include in their EQIP application (from the suite of alternatives presented by NRCS), the planner will select the payment schedule scenario that addresses the identified resource concern in the most cost-effective manner.

NRCS must place a payment cap in the contracting tool for any contract item where the participant elects to implement a higher cost payment scenario or extent greater than what NRCS determines technically necessary to treat the identified resource concern in accordance with NRCS conservation practice standards, specifications, job sheets, guide sheets, or other applicable criteria.

Example:

Conservation Practice Trail and Walkway (575), is being used to treat the resource concern of “terrestrial habitat for wildlife and invertebrates”. The necessary treatment length is 1 mile of trail with a width of 6 feet for total treatment area of 31,680 square feet. Based on soils investigation and other physical site parameters the designer determines 25,000 square feet need to be boardwalk, pile foundation scenario and 6,680 square feet can be adequately treated with boardwalk, mud-sill foundation. The client requests that the trail design be performed such that the entire 31,680 square feet be boardwalk, pile foundation. This request is made to simplify the ordering of materials and the construction of the trail so that the crew only needs to construct one type of trail.

In this instance, the planner would use the scenario boardwalk, pile foundation as this is the closest technical fit of the planned work. However, they must utilize a payment cap to limit the total financial assistance to the amount resulting from application of 25,000 square feet of boardwalk, pile supported, and 6,680 square feet of boardwalk, mud-sill foundation.

Multi-Purpose Buildings

When the Conservation Practice *Roofs and Covers* (Code 367) is used to address a resource concern, financial assistance may only be utilized on portions used for waste management. Any portion of the roof structure that covers alleyways, or other square footage that will not be actively used to manage waste, is not an eligible portion for financial assistance.

Payment & Contract Limitations (530.50E., 530.306, 530.406, 530.506)

Contracts enrolled under the 2018 Farm Bill are subject to contract and payment limitations*. Refer to the manual for all details related to payment limitations, contract limitations, and different business structure limitations.

EQIP- A person or legal entity may not receive, directly or indirectly, payments that, in the aggregate, exceed \$450,000 for all EQIP contracts entered into during fiscal years 2019 through 2023. 2018 Farm Bill contracts associated with the National Organic Initiative may not exceed \$140,000 in aggregate with no annual payment limitation.

EQIP-CIC – Contract limit of \$200,000 for person or legal entity.

CSP- A person or legal entity may not receive, directly or indirectly, payments that, in the aggregate, exceed \$200,000 for all CSP contracts originally obligated during FYs 2019 through 2023.

RCPP - Each LMR contract with a person or legal entity is limited to \$450,000 over the term of the contract. RCPP does not have payment limitations like EQIP and CSP.

**Federally recognized Indian Tribes are exempt from payment limitation requirements, contract limitations, and adjusted gross income (AGI) requirements. A federally recognized Indian Tribe includes Alaska Native village or regional corporation as defined in or established under the Alaska Native Claims Settlement Act.*

Planning Payment Caps (530.41B, 530.50G)

When planning conservation practices that will be included in a program contract, NRCS may only include the extent necessary to address the resource concern in accordance with the conservation standards, specifications, job sheets, guide sheets, or other applicable criteria.

NRCS must place a payment cap in the contracting tool for any contract item where the participant elects to implement a higher cost payment scenario or extent greater than what NRCS determines technically necessary to treat the identified resource concern in accordance with NRCS conservation practice standards, specifications, job sheets, guide sheets, or other applicable criteria. The payment cap allows the participant to receive payment for the lowest cost feasible scenario while still implementing their desired treatment option.

Practices

- Practices measured by the acre will be rounded to the nearest tenth of an acre (0.1 acre).
 - There is a business tool limitation that prevents contracting for areas smaller than 0.1 acre.
 - Thus, all payment scenarios contracted by the acre will be planned as a minimum of 0.1 acre.
 - The business tool does not limit the actual amount for payment.
 - When certifying practices for payment, the payment calculation will be based on applied amount which may be less than 0.1 ac.
 - Example: An application is planned with a Critical Area Planting practice for 0.06 acres.
 - The area used in the cost estimate and business tool for contracting is 0.1 acre.
 - Upon completing NRCS will measure the installed conservation practice (i.e. 0.06 acres) and use the actual acre in the payment calculation.
- Primary vs Supporting Practices
 - Refer to the National Planning Procedures Handbook (NPPH), Title 180, Part 600.25 Step 5 –Formulate Alternatives, for the difference between primary and supporting practices.
 - Refer to the Primary/Supporting CART Guide Sheet with Alaska examples: Alaska SharePoint-> Conservation Planning-> Other Resources
- Certain practices may only be eligible under special initiatives.
- EQIP practices are ineligible when (530.403H):
 - the sole purpose is to enhance production without addressing a natural resource concern.
 - the applicant previously implemented unless the applicant will achieve a higher level of conservation benefit as documented through the conservation planning assessment.
 - water conservation or irrigation-related conservation practices on land that has not been irrigated at least 2 out of the last 5 years unless the participant receives an approved waiver or exception per section 530.402C
 - where the primary purpose is renewable energy production (e.g., generation of electricity or biofuel practices that do not support onsite farm activities).

- that defeat the purpose of EQIP or other conservation program contracts including those practices which would create or cause a negative onsite or offsite impact.
- that do not address a resource concern directly tied to eligible land, such as a conservation practice implemented entirely within a water area that does not address a resource concern related to the submerged land (e.g., application of a chemical in a pond or reservoir solely for the purpose of eliminating an invasive or undesirable fish species).
- used for improvements to residential buildings or other non-agricultural operation-related structures.

Producer Decisions

In Step 7 of the planning process, the producer agrees to adopt one or more conservation practices that become part of the conservation plan.

Prior to the application moving forward, all implementation requirements for both engineering and ecological sciences practice(s) which are part of the program application will be completed and reviewed with the applicant. The planner should also provide the producer with an estimate of the amount of financial assistance they would receive for implementing each practice. This ensures that the practice is feasible, and that the applicant fully understands what is required and can obtain cost estimates.

Signature Authority (530.24)

Each joint operation or legal entity must authorize someone to act on its behalf to sign the application, contract, payment request, or other administrative documents.

Businesses and/or entities that utilize an EIN, but are not required to submit a membership list, can establish signature authority for NRCS programs by either:

- Utilize Form CCC-902E “Farm Operating Plan for an Entity”
- or
- Utilizing a resolution passed by the entity’s’ board of directors or similar governing body identified in their bylaws, corporate charter, or articles of incorporation. Resolutions must clearly designate the people who have signature authority by name (not just title). Resolutions may authorize signature authority to multiple people. The resolution should define the timeframe the signature authority is valid. Entities must provide NRCS both the resolution and article of incorporation/corporate charter/bylaws.

Signature Methods (NI 440-319, 530.25)

NRCS will accept contract documents with original signatures and digital signatures when uploaded through agency-approved, e-Authenticated, web portals. Certain documents or specific programs may require NRCS clients to sign forms using an original signature, as described in program-specific policy.

NRCS may accept electronic signatures if they comply with agency-approved signature guidance.

- Electronic signatures do not always ensure the authenticity of the signer. As such, NRCS will only accept electronic signatures if one of the following conditions are met:
 - The signature is a digital signature, which is a signature type that uses unique certificates to prove the time and location of the person signing and ensure authenticity; OR

- The signature is non-digital (such as a photo or scanned copy), but NRCS can compare the electronic signature with an original signature. In most cases, the original signed documents must subsequently be provided to NRCS.
- NRCS employees acting in their official capacity may use their LincPass/personal identity verification (PIV) to sign contract documents as delegated.
- NRCS employees must not use their LincPass/PIV if applying to or participating in NRCS programs.

Refer to National Instruction 440-319 and the spreadsheet, “Guide to Acceptable Signatures,” available on the Deputy Chief for Programs SharePoint Site for a list of forms and acceptable signature methods.

Standards and Specifications and Implementation Requirements

All Conservation Practice designs (Ecological Science and Engineering) shall use the version of the Conservation Practice Standard, Specification, and Implementation Requirements published on the Field Office Technical Guide at the time of design. The purpose is to provide the producer with the information and expectations of the practice during the planning and design process. Refer to National Planning Procedures Handbook for question regarding the applications of Conservation Practice Standards, Specifications, and Implementation Requirements.

Subsistence Agriculture Eligibility

Eligible land includes agricultural land and nonindustrial private forest land, and other land on which agricultural products, livestock, or forest-related products are produced and resource concerns may be addressed. Federal law, Title VIII of ANILCA, section 803, defines subsistence uses as the “customary and traditional” uses of wild resources for various uses including food, shelter, fuel, clothing, tools, transportation, handicrafts, sharing, barter, and customary trade. Thus, eligible land includes any subsistence lands supporting habitat for hunting, fishing, or gathering for customary and traditional subsistence medicine, food, and fiber.

Used Materials

Used materials shall not be permitted for use in conservation practices without written approval from the State Conservation Engineer or the State Resource Conservationist, whichever is assigned as the lead discipline for the practice. Requests to allow used materials must be submitted to the SCE or SRC in writing and written approval from the SCE or SRC must be issued prior to commencing practice installation. Used drill stem shall be permitted for use in fencing practices provided the steel pipe diameter is 2 ¼ inches or greater, the wall thickness is 3/16 inches or greater, the pipe is free of dents or bends, and no rust pitting is evident on the pipe.

Water Well (Code 642) (530.403, AK SI 450 Part 401)

Situations that are not clearly described in AK State Instruction 450 Part 401 require prior written approval from the State Conservation Engineer (SCE) before assessing in CART.

Wells are ineligible for EQIP when:

- Used to bring new land under irrigation or to replace an existing irrigation well, unless the criteria in section 530.403F (Source Water Protection) are met.
- Used to provide water to a residence.
- Land must have been irrigated for at least 2 out of the last 5 years to qualify for irrigation-related conservation practices and activities that improve water conservation.
 - *unless the participant receives an approved waiver or exception per 530.402C.*

Wildlife Objectives

Program applications with the resource concern 'Inadequate habitat for fish and wildlife – Habitat degradation' will document the resource concern via one of the following inventory, measurement, and assessment tools:

- Alaska Wildlife Habitat Evaluation Guide (WHEG) when the land use/habitat type is supported
 - i.e. mixed forest and wooded; black spruce forest and wooded, farmland;
- Stream Visual Assessment Protocol Version 2 (SVAP2) when a stream is present;
- Species specific wildlife habitat assessment tools/guides;
- and/or biological narrative assessment

Biological narrative assessments will follow Wildlife Habitat Action Plan (WHAP) format (see AK Tech Note 14). All species-specific wildlife habitat assessments tools/guides and biological narrative assessments will be reviewed and concurred by the State Biologist or State Resource Conservationist.

Alaska Environmental Quality Incentives Program (EQIP) Requirements 2023

Code	Practice	Guide
101	CNMP Design and Implementation Activity	Description: A site specific design and implementation activity plan developed for an Animal Feeding Operation (AFO) or user of the by-products of an AFO that includes components for both structural and non-structural conservation practices that address the planned practices for land application of manure and nutrients, and the handling, transfer, storage and treatment of animal wastes.
101	CNMP Design and Implementation Activity	Type: Design and Implementation Activity (DIA): An activity that allows for development of specific practice designs, management prescriptions, or other instructions that allow the client to implement the conservation practice or system of conservation practices. A DIA is consistent with Step 8 of the NRCS conservation planning process. (Does not include assistance with conservation practice installation, review, and checkout)
101	CNMP Design and Implementation Activity	Follow National Instruction 440-320 - Guidance for Implementing Conservation Planning Activity, Design and Implementation Activity, and Conservation Evaluation and Monitoring Activity for program use.
101	CNMP Design and Implementation Activity	Plan to be approved by the State Resource Conservationist and State Engineer prior to payment.
102	Comprehensive Nutrient Management Plan	Description: A site specific conservation plan developed for an Animal Feeding Operation (AFO) or user of the by-products of an AFO that includes the following two components: (a) The production area including the animal confinement, feed and other raw materials storage areas, and the waste handling containment or storage areas, and (b) the land treatment area, including any land under control of the AFO owner or operator, whether it is owned, rented, or leased, and to which manure or process wastewater from the production area is, or might be, applied for crop and/or pasture production.
102	Comprehensive Nutrient Management Plan	Type: Conservation Planning Activity (CPA): An activity that results in a conservation plan consistent with steps 1-7 of the NRCS conservation planning process. The CPA will document client decisions regarding selected alternatives including identification of desired primary and supporting practices that the client would like to use to treat identified resource concerns.

Alaska Environmental Quality Incentives Program (EQIP) Requirements 2023

102	Comprehensive Nutrient Management Plan	Follow National Instruction 440-320 - Guidance for Implementing Conservation Planning Activity, Design and Implementation Activity, and Conservation Evaluation and Monitoring Activity for program use.
102	Comprehensive Nutrient Management Plan	Plan to be approved by the State Resource Conservationist and State Engineer prior to payment.
106	Forest Management Plan	Description: A site specific conservation plan that contains planned forest related conservation treatment activities for one or more resource concerns.
106	Forest Management Plan	Type: Conservation Planning Activity (CPA): An activity that results in a conservation plan consistent with steps 1-7 of the NRCS conservation planning process. The CPA will document client decisions regarding selected alternatives including identification of desired primary and supporting practices that the client would like to use to treat identified resource concerns.
106	Forest Management Plan	Follow National Instruction 440-320 - Guidance for Implementing Conservation Planning Activity, Design and Implementation Activity, and Conservation Evaluation and Monitoring Activity for program use.
106	Forest Management Plan	Plan to be approved by the State Forester prior to payment.
116	Soil Health Management Plan	Description: Component of a conservation plan that identifies soil health concerns related to the physical, biological and chemical properties of the soil.
116	Soil Health Management Plan	Type: Conservation Planning Activity (CPA): An activity that results in a conservation plan consistent with steps 1-7 of the NRCS conservation planning process. The CPA will document client decisions regarding selected alternatives including identification of desired primary and supporting practices that the client would like to use to treat identified resource concerns.
116	Soil Health Management Plan	Follow National Instruction 440-320 - Guidance for Implementing Conservation Planning Activity, Design and Implementation Activity, and Conservation Evaluation and Monitoring Activity for program use.
116	Soil Health Management Plan	Plan to be approved by State Soil Scientist and State Agronomist prior to payment.
120	Agricultural Energy Design	Description: Plan, design, and document one or more conservation practices that address inefficient energy use.

Alaska Environmental Quality Incentives Program (EQIP) Requirements 2023

120	Agricultural Energy Design	Type: Design and Implementation Activity (DIA): An activity that allows for development of specific practice designs, management prescriptions, or other instructions that allow the client to implement the conservation practice or system of conservation practices. A DIA is consistent with Step 8 of the NRCS conservation planning process. (Does not include assistance with conservation practice installation, review, and checkout)
120	Agricultural Energy Design	Follow National Instruction 440-320 - Guidance for Implementing Conservation Planning Activity, Design and Implementation Activity, and Conservation Evaluation and Monitoring Activity for program use.
120	Agricultural Energy Design	Factors to consider for low complexity: design is for one-to-one replacements, design is for a new component to modify operation of an existing device, maintain current device outputs (within approx. 10%), does not require substantive changes to electrical, mechanical, plumbing, or structural systems. These types of designs can typically be handled by NRCS staff. Examples include lamp and fixture replacements, controllers, attic insulation.
120	Agricultural Energy Design	Factors to consider for medium complexity: the design includes a change of service level, the system can be evaluated and designed with simple tools or manual calculations, typically more than a 10% change in output of existing devices, new devices installed in new locations, requires substantive changes to either electrical, mechanical, plumbing, or structural systems. These designs are typically beyond the scope of NRCS methodology. Examples include adding significant new light fixtures, grain dryers, evaporative cooling.
120	Agricultural Energy Design	Factors to consider for high complexity: design includes a change in service level that cannot be evaluated or designed with simple tools or manual calculations, change in output of existing devices by more than 30%, require substantive changes to 2 or more electrical, mechanical, plumbing, or structural systems, complex design analysis typically including computer simulations. These designs are always beyond the scope of NRCS design methodology. Examples include: radiant heating, comprehensive lighting system redesigns for complex operations and structures, conversion to tunnel ventilation.
120	Agricultural Energy Design	Plan to be approved by person with appropriate EJAA prior to payment.

Alaska Environmental Quality Incentives Program (EQIP) Requirements 2023

138	Conservation Plan Supporting Organic Transition	Description: A conservation plan that contains planned conservation treatment activities for resource concerns resulting from the transition of conventional to organic production systems.
138	Conservation Plan Supporting Organic Transition	Type: Conservation Planning Activity (CPA): An activity that results in a conservation plan consistent with steps 1-7 of the NRCS conservation planning process. The CPA will document client decisions regarding selected alternatives including identification of desired primary and supporting practices that the client would like to use to treat identified resource concerns.
138	Conservation Plan Supporting Organic Transition	Plan to be approved by the Designated Conservationist prior to payment.
138	Conservation Plan Supporting Organic Transition	Follow National Instruction 440-320 - Guidance for Implementing Conservation Planning Activity, Design and Implementation Activity, and Conservation Evaluation and Monitoring Activity for program use.
140	Transition to Organic Design	Description: Conservation Plan Supporting Transition to Organic is a component plan that includes a combination of structural and management practices for an agricultural operation transitioning to become certified organic by USDA. A site-specific component of a conservation plan. The DIA-140 is developed for a client to address one or more resource concerns on farms transitioning to certified organic production where related conservation activities and/or practices will be planned and implemented. The plan describes how to implement long-term goals through practices that direct farm development to provide for intended future uses.
140	Transition to Organic Design	Type: Design and Implementation Activity (DIA): An activity that allows for development of specific practice designs, management prescriptions, or other instructions that allow the client to implement the conservation practice or system of conservation practices. A DIA is consistent with Step 8 of the NRCS conservation planning process. (Does not include assistance with conservation practice installation, review, and checkout)
140	Transition to Organic Design	Follow National Instruction 440-320 - Guidance for Implementing Conservation Planning Activity, Design and Implementation Activity, and Conservation Evaluation and Monitoring Activity for program use.

Alaska Environmental Quality Incentives Program (EQIP) Requirements 2023

140	Transition to Organic Design	Plan to be approved by the Designated Conservationist prior to payment.
144	Fish and Wildlife Habitat Design	<p>Description: Plan, design and document the conservation practices needed to address a fish or wildlife habitat resource concern.</p> <p>A fish and wildlife habitat Design and Implementation Activity (DIA) is a site-specific plan developed for a client who wishes to plan and implement decisions with consideration for fish and wildlife habitat.</p>
144	Fish and Wildlife Habitat Design	<p>Type: Design and Implementation Activity (DIA): An activity that allows for development of specific practice designs, management prescriptions, or other instructions that allow the client to implement the conservation practice or system of conservation practices. A DIA is consistent with Step 8 of the NRCS conservation planning process. (Does not include assistance with conservation practice installation, review, and checkout)</p>
144	Fish and Wildlife Habitat Design	Follow National Instruction 440-320 - Guidance for Implementing Conservation Planning Activity, Design and Implementation Activity, and Conservation Evaluation and Monitoring Activity for program use.
144	Fish and Wildlife Habitat Design	Plan to be approved by the Designated Conservationist prior to payment.
148	Pollinator Habitat Design	<p>Description: Plan, design and document the conservation practices needed to address a pollinator habitat resource concern.</p> <p>A pollinator habitat enhancement plan is a site-specific plan developed for a client that addresses the improvement, protection, restoration, enhancement, or expansion of flower-rich habitat that supports native and/or managed pollinators.</p>
148	Pollinator Habitat Design	<p>Type: Design and Implementation Activity (DIA): An activity that allows for development of specific practice designs, management prescriptions, or other instructions that allow the client to implement the conservation practice or system of conservation practices. A DIA is consistent with Step 8 of the NRCS conservation planning process. (Does not include assistance with conservation practice installation, review, and checkout)</p>

Alaska Environmental Quality Incentives Program (EQIP) Requirements 2023

148	Pollinator Habitat Design	Follow National Instruction 440-320 - Guidance for Implementing Conservation Planning Activity, Design and Implementation Activity, and Conservation Evaluation and Monitoring Activity for program use.
148	Pollinator Habitat Design	Plan to be approved by the Designated Conservationist prior to payment.
157	Nutrient Management Design and Implementation Activity	<p>Description: Design the rate, source, placement, and timing of plant nutrients and soil amendments while reducing environmental impacts. Implementation requirements for Conservation Practice Standard (CPS) 590 Nutrient Management along with other supporting conservation practices are developed.</p> <p>Nutrient management plans are documents of record, establishing how nutrients will be managed including the Rate, Source, Placement and Timing of plan nutrients for plant production while addressing identified resource concerns including the offsite movement of nutrients. Prepare plans in collaboration with the producer and/or landowner design them to help the producer implement and maintain an effective nutrient application plan based on available sources.</p>
157	Nutrient Management Design and Implementation Activity	Type: Design and Implementation Activity (DIA): An activity that allows for development of specific practice designs, management prescriptions, or other instructions that allow the client to implement the conservation practice or system of conservation practices. A DIA is consistent with Step 8 of the NRCS conservation planning process. (Does not include assistance with conservation practice installation, review, and checkout)
157	Nutrient Management Design and Implementation Activity	Follow National Instruction 440-320 - Guidance for Implementing Conservation Planning Activity, Design and Implementation Activity, and Conservation Evaluation and Monitoring Activity for program use.
157	Nutrient Management Design and Implementation Activity	Plan to be approved by the State Agronomist prior to payment.
158	Feed Management Design	Description: A feed management plan is a farm-specific plan developed for a client, to document control of the quantity and quality of available nutrients, feedstuffs, and/or additives fed to livestock and poultry.

Alaska Environmental Quality Incentives Program (EQIP) Requirements 2023

158	Feed Management Design	Type: Design and Implementation Activity (DIA): An activity that allows for development of specific practice designs, management prescriptions, or other instructions that allow the client to implement the conservation practice or system of conservation practices. A DIA is consistent with Step 8 of the NRCS conservation planning process. (Does not include assistance with conservation practice installation, review, and checkout)
158	Feed Management Design	Follow National Instruction 440-320 - Guidance for Implementing Conservation Planning Activity, Design and Implementation Activity, and Conservation Evaluation and Monitoring Activity for program use.
158	Feed Management Design	Plan to be approved by the Designated Conservationist prior to payment.
159	Grazing Management Design	Description: Manage the harvest of vegetation with grazing and/or browsing animals with the intent to achieve specific ecological, economic and management objectives. Plan prescribed grazing to accomplish one or more purposes described in the conservation practice following general criteria, considerations and operation and maintenance. A Grazing Management Design and Implementation Activity (DIA) is a site-specific plan developed for a client who wishes to plan and implement decisions on land where grazing related activities or practices will be planned and applied.
159	Grazing Management Design	Type: Design and Implementation Activity (DIA): An activity that allows for development of specific practice designs, management prescriptions, or other instructions that allow the client to implement the conservation practice or system of conservation practices. A DIA is consistent with Step 8 of the NRCS conservation planning process. (Does not include assistance with conservation practice installation, review, and checkout)
159	Grazing Management Design	Follow National Instruction 440-320 - Guidance for Implementing Conservation Planning Activity, Design and Implementation Activity, and Conservation Evaluation and Monitoring Activity for program use.
159	Grazing Management Design	Plan to be approved by the State Range Conservationist prior to payment.

Alaska Environmental Quality Incentives Program (EQIP) Requirements 2023

160	Prescribed Burning Design	<p>Description: Planned fire applied to a predetermined area to accomplish one or more of the purposes described in the conservation practice standard following general criteria, considerations and operation and maintenance.</p> <p>A Prescribed Burning Design and Implementation Activity (DIA) is a site-specific plan developed for a client who wishes to plan and implement decisions on land where prescribed burning related activities or practices will be planned and applied.</p>
160	Prescribed Burning Design	<p>Type: Design and Implementation Activity (DIA): An activity that allows for development of specific practice designs, management prescriptions, or other instructions that allow the client to implement the conservation practice or system of conservation practices. A DIA is consistent with Step 8 of the NRCS conservation planning process. (Does not include assistance with conservation practice installation, review, and checkout)</p>
160	Prescribed Burning Design	<p>Follow National Instruction 440-320 - Guidance for Implementing Conservation Planning Activity, Design and Implementation Activity, and Conservation Evaluation and Monitoring Activity for program use.</p>
160	Prescribed Burning Design	<p>Plan to be approved by State Resource Conservationist prior to payment.</p>
161	Pest Management Conservation System Design	<p>Description: Pest Management Conservation System manages pests using a combination of conservation practices and Prevention, Avoidance, Monitoring, and Suppression (PAMS) techniques. It addresses beneficial organism, plant pressure, surface, and groundwater impacts.</p> <p>Pest management plans are documents of record establishing how pests will be managed while addressing identified resource concerns including plant pest pressure, beneficial organisms, and the movement of pesticides. These plans are prepared in collaboration with producer and/or landowner and designed to help the producer implement and maintain an effective plan for the management of pests from available sources.</p>

Alaska Environmental Quality Incentives Program (EQIP) Requirements 2023

161	Pest Management Conservation System Design	Type: Design and Implementation Activity (DIA): An activity that allows for development of specific practice designs, management prescriptions, or other instructions that allow the client to implement the conservation practice or system of conservation practices. A DIA is consistent with Step 8 of the NRCS conservation planning process. (Does not include assistance with conservation practice installation, review, and checkout)
161	Pest Management Conservation System Design	Follow National Instruction 440-320 - Guidance for Implementing Conservation Planning Activity, Design and Implementation Activity, and Conservation Evaluation and Monitoring Activity for program use.
161	Pest Management Conservation System Design	Plan to be approved by the Designated Conservationist prior to payment.
162	Soil Health Management System Design	Description: Develop site specific recommendations and designs for soil health related practices that address the 4 principles of soil health as identified in CPA 116 or a conservation plan.
162	Soil Health Management System Design	Type: Design and Implementation Activity (DIA): An activity that allows for development of specific practice designs, management prescriptions, or other instructions that allow the client to implement the conservation practice or system of conservation practices. A DIA is consistent with Step 8 of the NRCS conservation planning process. (Does not include assistance with conservation practice installation, review, and checkout)
162	Soil Health Management System Design	Follow National Instruction 440-320 - Guidance for Implementing Conservation Planning Activity, Design and Implementation Activity, and Conservation Evaluation and Monitoring Activity for program use.
162	Soil Health Management System Design	Plan to be approved by State Soil Scientist and State Agronomist prior to payment.
163	Irrigation Water Management Design	Description: Design the volume, frequency, and application rate of irrigation water. Implementation requirements for CPS 449 Irrigation Water Management along with other supporting conservation practices are developed.

Alaska Environmental Quality Incentives Program (EQIP) Requirements 2023

163	Irrigation Water Management Design	Type: Design and Implementation Activity (DIA): An activity that allows for development of specific practice designs, management prescriptions, or other instructions that allow the client to implement the conservation practice or system of conservation practices. A DIA is consistent with Step 8 of the NRCS conservation planning process. (Does not include assistance with conservation practice installation, review, and checkout)
163	Irrigation Water Management Design	Follow National Instruction 440-320 - Guidance for Implementing Conservation Planning Activity, Design and Implementation Activity, and Conservation Evaluation and Monitoring Activity for program use.
163	Irrigation Water Management Design	Plan to be approved by Designated Conservationist and NRCS Engineer prior to payment.
164	Improved Management of Drainage Water Design	Description: Design the drainage volume and water table elevation by regulating the flow from a surface or subsurface agricultural drainage system. Implementation requirements for CPS 554 Drainage Water Management along with other supporting conservation practices are developed.
164	Improved Management of Drainage Water Design	Type: Design and Implementation Activity (DIA): An activity that allows for development of specific practice designs, management prescriptions, or other instructions that allow the client to implement the conservation practice or system of conservation practices. A DIA is consistent with Step 8 of the NRCS conservation planning process. (Does not include assistance with conservation practice installation, review, and checkout)
164	Improved Management of Drainage Water Design	Follow National Instruction 440-320 - Guidance for Implementing Conservation Planning Activity, Design and Implementation Activity, and Conservation Evaluation and Monitoring Activity for program use.
164	Improved Management of Drainage Water Design	Plan approved by person with appropriate EJAA prior to payment.

Alaska Environmental Quality Incentives Program (EQIP) Requirements 2023

165	Forest Management Practice Design	<p>Description: Design conservation practices found in a site specific Forest Management Plan (CPA 106), Forest Stewardship Plan or other FMP as accepted by the State Conservationist that address the planned practices to meet conservation objectives</p> <p>A site-specific forestry activity, as a component of a forest management plan. The DIA-165 is developed for a client to address one or more resource concerns on nonindustrial private forestland where forestry-related conservation activities and/or practices will be planned and implemented. The plan describes how to implement long-term goals through practices that direct forest development to provide for intended future uses.</p>
165	Forest Management Practice Design	<p>Type: Design and Implementation Activity (DIA): An activity that allows for development of specific practice designs, management prescriptions, or other instructions that allow the client to implement the conservation practice or system of conservation practices. A DIA is consistent with Step 8 of the NRCS conservation planning process. (Does not include assistance with conservation practice installation, review, and checkout</p>
165	Forest Management Practice Design	<p>Follow National Instruction 440-320 - Guidance for Implementing Conservation Planning Activity, Design and Implementation Activity, and Conservation Evaluation and Monitoring Activity for program use.</p>
165	Forest Management Practice Design	<p>Plan to be approved by State Forester prior to payment.</p>
199	Conservation Plan	<p>Description: A Conservation Plan addresses a limited number of resource concerns - or even a single resource concern – and consequently does not achieve a resource management system (RMS) level of treatment.</p>
199	Conservation Plan	<p>Type: Conservation Planning Activity (CPA): An activity that results in a conservation plan consistent with steps 1-7 of the NRCS conservation planning process. The CPA will document client decisions regarding selected alternatives including identification of desired primary and supporting practices that the client would like to use to treat identified resource concerns.</p>
199	Conservation Plan	<p>Follow National Instruction 440-320 - Guidance for Implementing Conservation Planning Activity, Design and Implementation Activity, and Conservation Evaluation and Monitoring Activity for program use.</p>
199	Conservation Plan	<p>Plan to be approved by State Resource Conservationist prior to payment.</p>

Alaska Environmental Quality Incentives Program (EQIP) Requirements 2023

207	Site Assessment and Soil Testing for Contaminants Activity	Description: Water quality monitoring data collection and evaluation under this conservation activity standard are the actions and activities, using acceptable tools and protocols, by which a producer will measure the effectiveness of conservation practices and systems.
207	Site Assessment and Soil Testing for Contaminants Activity	Type: Conservation Evaluation and Monitoring Activity (CEMA): An activity that includes evaluation, monitoring, testing, or assessment for a specific purpose, to complete practice implementation requirements, or to determine the effectiveness of conservation practices and activities. A CEMA is consistent with Step 9 of the NRCS conservation planning process but may be used at any point in the planning process.
207	Site Assessment and Soil Testing for Contaminants Activity	Follow National Instruction 440-320 - Guidance for Implementing Conservation Planning Activity, Design and Implementation Activity, and Conservation Evaluation and Monitoring Activity for program use.
207	Site Assessment and Soil Testing for Contaminants Activity	Plan to be approved by State Soil Scientist and State Agronomist prior to payment.
216	Soil Health Testing	Description: Quantitative testing for physical, biological, or chemical characteristics of soil and constraints of soil using approved laboratory methods.
216	Soil Health Testing	Type: Conservation Evaluation and Monitoring Activity (CEMA): An activity that includes evaluation, monitoring, testing, or assessment for a specific purpose, to complete practice implementation requirements, or to determine the effectiveness of conservation practices and activities. A CEMA is consistent with Step 9 of the NRCS conservation planning process but may be used at any point in the planning process.
216	Soil Health Testing	Follow National Instruction 440-320 - Guidance for Implementing Conservation Planning Activity, Design and Implementation Activity, and Conservation Evaluation and Monitoring Activity for program use.
217	Soil and Source Testing for Nutrient Management	Description: A sampling strategy for nutrient management measuring nutrient levels in soil and or nutrient source.

Alaska Environmental Quality Incentives Program (EQIP) Requirements 2023

217	Soil and Source Testing for Nutrient Management	Type: Conservation Evaluation and Monitoring Activity (CEMA): An activity that includes evaluation, monitoring, testing, or assessment for a specific purpose, to complete practice implementation requirements, or to determine the effectiveness of conservation practices and activities. A CEMA is consistent with Step 9 of the NRCS conservation planning process but may be used at any point in the planning process.
217	Soil and Source Testing for Nutrient Management	Follow National Instruction 440-320 - Guidance for Implementing Conservation Planning Activity, Design and Implementation Activity, and Conservation Evaluation and Monitoring Activity for program use.
218	Carbon Sequestration and Greenhouse Gas Mitigation Assessment	Description: Quantitative assessment of the carbon sequestration and greenhouse gas (GHG) mitigation scenarios for an operation with a conservation plan using COMET-Farm. COMET-Farm tool - utilize the link on the COMET home page http://comet-farm.com Upload a copy to DMS.
218	Carbon Sequestration and Greenhouse Gas Mitigation Assessment	Type: Conservation Evaluation and Monitoring Activity (CEMA): An activity that includes evaluation, monitoring, testing, or assessment for a specific purpose, to complete practice implementation requirements, or to determine the effectiveness of conservation practices and activities. A CEMA is consistent with Step 9 of the NRCS conservation planning process but may be used at any point in the planning process.
218	Carbon Sequestration and Greenhouse Gas Mitigation Assessment	Follow National Instruction 440-320 - Guidance for Implementing Conservation Planning Activity, Design and Implementation Activity, and Conservation Evaluation and Monitoring Activity for program use.
218	Carbon Sequestration and Greenhouse Gas Mitigation Assessment	Type: Conservation Evaluation and Monitoring Activity (CEMA): An activity that includes evaluation, monitoring, testing, or assessment for a specific purpose, to complete practice implementation requirements, or to determine the effectiveness of conservation practices and activities. A CEMA is consistent with Step 9 of the NRCS conservation planning process but may be used at any point in the planning process.
218	Carbon Sequestration and Greenhouse Gas Mitigation Assessment	Follow National Instruction 440-320 - Guidance for Implementing Conservation Planning Activity, Design and Implementation Activity, and Conservation Evaluation and Monitoring Activity for program use.

Alaska Environmental Quality Incentives Program (EQIP) Requirements 2023

228	Agricultural Energy Assessment	Description: An assessment of the energy consuming activities and components of an agricultural operation.
228	Agricultural Energy Assessment	Note: The completed energy assessment is to be approved by an NRCS employee certified for energy projects in their engineering job approval chart for conservation practice 374.
309	Agrichemical Handling Facility	High Priority Payment Rate applicable only when practice is used to address a specific causes of impairment relating to excessive nutrients in ground/surface water.
309	Agrichemical Handling Facility	Source Water Payment Rate is applicable when the following conditions are met: <ul style="list-style-type: none"> - Project is located within source water quality area. To determine if your project is located in a SWPA area use the GIS layer SWPApriorities_ak - Practice addresses water quality and/or quantity -AND- protects drinking water sources - Practice is used to address one of the primary resource concerns: water quality degradation, insufficient water
313	Waste Storage Facility	If an EQIP schedule of operations includes an animal waste storage or treatment facility on an animal feeding operation (AFO), the participant must have a NRCS-approved comprehensive nutrient management plan (CNMP) prior to implementation of any waste storage or treatment facility or associated nutrient management activities. The CNMP will account for resource concerns and conservation practices and activities planned for an AFO associated with storing, treating, land applying, or handling (transferring) of animal waste or organic byproducts, such as animal carcasses. The requirement for development of a CNMP only applies to an AFO where animals are kept and raised in confined situations. Refer to 530.405 for all requirements related to CNMPs.
313	Waste Storage Facility	High Priority Payment Rate applicable only when practice is used to address a specific causes of impairment relating to excessive nutrients in ground/surface water.

Alaska Environmental Quality Incentives Program (EQIP) Requirements 2023

313	Waste Storage Facility	<p>Source Water Payment Rate is applicable when the following conditions are met:</p> <ul style="list-style-type: none"> - Project is located within source water quality area. To determine if your project is located in a SWPA area use the GIS layer SWPApriorities_ak - Practice addresses water quality and/or quantity -AND- protects drinking water sources - Practice is used to address one of the primary resource concerns: water quality degradation, insufficient water
314	Brush Management	Brush Management is not applicable on forest land or cropland, including hayland.
314	Brush Management	The amount to be treated will be identified in the Prescribed Grazing or Wildlife Habitat Management Plan.
314	Brush Management	Any application that includes structural or management practices related to grazing livestock, must also include a Grazing Management Plan as a part of the Conservation Plan and may include Prescribed Grazing (328) in the program application.
315	Herbaceous Weed Treatment	This practice is not eligible on cropland.
317	Composting Facility	Ensure Compositing Facility matches the goals of the applicant and other alternatives, including Waste Storage Facility, have been evaluated.
317	Composting Facility	<p>If the Composting Facility includes Animal Waste:</p> <p>If an EQIP schedule of operations includes an animal waste storage or treatment facility on an animal feeding operation (AFO), the participant must have a NRCS-approved comprehensive nutrient management plan (CNMP) prior to implementation of any waste storage or treatment facility or associated nutrient management activities. The CNMP will account for resource concerns and conservation practices and activities planned for an AFO associated with storing, treating, land applying, or handling (transferring) of animal waste or organic byproducts, such as animal carcasses. The requirement for development of a CNMP only applies to an AFO where animals are kept and raised in confined situations. Refer to 530.405 for all requirements related to CNMPs.</p>

Alaska Environmental Quality Incentives Program (EQIP) Requirements 2023

317	Composting Facility	This practice is eligible when the compost facility is used to address a resource concern generated on the planned operation. When portions of the waste are generated off-site, prior approval must be obtained from the State Conservation Engineer prior to assessing in CART. Upload concurrence in DMS.
319	On-Farm Secondary Containment Facility	Source Water Payment Rate is applicable when the following conditions are met: - Project is located within source water quality area. To determine if your project is located in a SWPA area use the GIS layer SWPApriorities_ak - Practice addresses water quality and/or quantity -AND- protects drinking water sources - Practice is used to address one of the primary resource concerns: water quality degradation, insufficient water
325	High Tunnel System	To properly document resource concern(s), a full season of crop production history is needed. Documentation must be part of the inventory and evaluation process.
325	High Tunnel System	Relocation of the production area is NOT allowed. High Tunnel must be planned and installed where the existing resource concern exists (i.e. current production area).
325	High Tunnel System	The practice must be sited on existing cropland with a documented resource concern.
325	High Tunnel System	High tunnels placed on areas of sod forming grass or cover crops which are tilled under are not eligible for financial assistance.
325	High Tunnel System	Plan may include a slightly larger size high tunnel than the treatment area to accommodate manufacture kit sizes. Ensure the size is reasonable and decisions documented in the Conservation Assistance Notes.
325	High Tunnel System	For your convenience, a Water Use Estimate spreadsheet is available on Section IV of the FOTG in the Engineering Tools folder. eFOTG: https://efotg.sc.egov.usda.gov/#/state/AK
326	Clearing and Snagging	If an EQIP schedule of operations includes forest-related conservation practices or activities on forest land, the participant must implement conservation practices and activities consistent with an approved forest management plan.

Alaska Environmental Quality Incentives Program (EQIP) Requirements 2023

327	Conservation Cover	The "Small scale, Pollinator Habitat" scenario includes a weed suppression component. Do not contract Mulch or Herbaceous Weed Control for the treatment area.
327	Conservation Cover	If the practices are for the purposes of wildlife management a Wildlife Habitat Action Plan (WHAP) is required.
327	Conservation Cover	When to use 327 vs 420? If the primary purpose is to address a wildlife habitat resource concern utilize the 420 practice. If the primary purpose is to address any other resource concern utilize the 327 practice. Please keep in mind the 420 practice allows for annuals in the mixture, while the 327 practice does not. If the main purpose is to address soil erosion but a secondary benefits to address wildlife habitat is sought, modify the 420 planting recommendation to meet seeding requirements for erosion control.
327	Conservation Cover	Source Water Payment Rate is applicable when the following conditions are met: - Project is located within source water quality area. To determine if your project is located in a SWPA area use the GIS layer SWPApriorities_ak - Practice addresses water quality and/or quantity -AND- protects drinking water sources - Practice is used to address one of the primary resource concerns: water quality degradation, insufficient water
328	Conservation Crop Rotation	Payments are not authorized for rotation already adopted.
328	Conservation Crop Rotation	High Priority Payment Rate: Available only in the Delta and Mat Su Valley when used to treat the resource concern 'naturally available moisture use'. Eligibility for the High Priority payment rate is determined by the census boundary area. To determine if your project is located in the census area use the GIS layer county_a_ak_2010
329	Residue and Tillage Management, No Till	High Priority Payment Rate: Available only in the Delta and Mat Su Valley when used to treat the resource concern 'naturally available moisture use'. Eligibility for the High Priority payment rate is determined by the census boundary area. To determine if your project is located in the census area use the GIS layer county_a_ak_2010

Alaska Environmental Quality Incentives Program (EQIP) Requirements 2023

329	Residue and Tillage Management, No Till	<p>Source Water Payment Rate is applicable when the following conditions are met:</p> <ul style="list-style-type: none"> - Project is located within source water quality area. To determine if your project is located in a SWPA area use the GIS layer SWPAPriorities_ak - Practice addresses water quality and/or quantity -AND- protects drinking water sources - Practice is used to address one of the primary resource concerns: water quality degradation, insufficient water
340	Cover Crop	Adaptive Management scenario will follow the 340 Cover Crop Adaptive Management Guide Sheet on the Field Office Technical Guide.
340	Cover Crop	<p>Adaptive management is a process of testing an idea to evaluate and adjust the application of a conservation practice over multiple seasons. The process allows for continued adjustments of the NRCS conservation practice standards to achieve better practice efficiency. Because adaptive management is asking a question, it is best to limit the variables so that reliable data can be measured and interpreted so the practice effectiveness can be properly evaluated. Therefore, only one adaptive management practice is allowed per land unit.</p>
340	Cover Crop	<p>High Priority Payment Rate: Available only in the Delta and Mat Su Valley when used to treat the resource concern 'naturally available moisture use'. Eligibility for the High Priority payment rate is determined by the census boundary area. To determine if your project is located in the census area use the GIS layer county_a_ak_2010</p>
342	Critical Area Planting	For gullies ~1' deep use "moderate" scenario. For gullies ~3' deep use "Heavy Grading" scenario.
345	Residue and Tillage Management, Reduced Till	<p>High Priority Payment Rate: Available only in the Delta and Mat Su Valley when used to treat the resource concern 'naturally available moisture use'. Eligibility for the High Priority payment rate is determined by the census boundary area. To determine if your project is located in the census area use the GIS layer county_a_ak_2010</p>

Alaska Environmental Quality Incentives Program (EQIP) Requirements 2023

345	Residue and Tillage Management, Reduced Till	<p>Source Water Payment Rate is applicable when the following conditions are met:</p> <ul style="list-style-type: none"> - Project is located within source water quality area. To determine if your project is located in a SWPA area use the GIS layer SWPApriorities_ak - Practice addresses water quality and/or quantity -AND- protects drinking water sources - Practice is used to address one of the primary resource concerns: water quality degradation, insufficient water
350	Sediment Basin	<p>Source Water Payment Rate is applicable when the following conditions are met:</p> <ul style="list-style-type: none"> - Project is located within source water quality area. To determine if your project is located in a SWPA area use the GIS layer SWPApriorities_ak - Practice addresses water quality and/or quantity -AND- protects drinking water sources - Practice is used to address one of the primary resource concerns: water quality degradation, insufficient water
355	Groundwater Testing	<p>This practice is limited to testing groundwater and does not apply to surface water sources that require testing.</p>
355	Groundwater Testing	<p>Basic - includes nitrates, pH, coliform (additional items may include alkalinity, carbonates/bicarbonates, EC, dissolved solids, B, Cl, Ca, Mg, Na, SAR, and hardness, etc.)</p> <p>Specialized – includes testing for specific pesticide, inorganic chemical or volatile organic in addition to the basic water quality tests.</p> <p>Full Spectrum - professional comprehensive testing for all less common substances, to include: pesticides, heavy metals, VOC's or other less common substances, in addition to the basic water test items.</p>

Alaska Environmental Quality Incentives Program (EQIP) Requirements 2023

367	Roofs and Covers	<p>If part of a waste management system (including Heavy Use Area Protection – if used to collect or trap animal waste):</p> <p>If an EQIP schedule of operations includes an animal waste storage or treatment facility on an animal feeding operation (AFO), the participant must have a NRCS-approved comprehensive nutrient management plan (CNMP) prior to implementation of any waste storage or treatment facility or associated nutrient management activities. The CNMP will account for resource concerns and conservation practices and activities planned for an AFO associated with storing, treating, land applying, or handling (transferring) of animal waste or organic byproducts, such as animal carcasses. The requirement for development of a CNMP only applies to an AFO here animals are kept and raised in confined situations. Refer to 530.405 for all requirements related to CNMPs.</p>
367	Roofs and Covers	<p>Any part of a building used solely for livestock housing, feeding, or animal comfort is ineligible for EQIP. When the Conservation Practice Roofs and Covers (Code 367) is used to address a resource concern, financial assistance may only be utilized on portions used for waste management. Any portion of the roof structure that covers alleyways, or other square footage that will not be actively used to manage waste, is not an eligible portion for financial assistance.</p>
374	Energy Efficient Agricultural Operation	<p>Implementations must be specifically recommended in a Type 2 On Farm Energy Audit.</p>
374	Energy Efficient Agricultural Operation	<p>All conservation practice contract items that will be implemented as part of National On-Farm Energy will enter the energy benefits in ProTracts. If estimated values for ghg reductions are not available from an approved energy audit, they can be obtained from the COMET-Energy tool - utilize the link on the COMET home page http://comet-farm.com</p> <p>Information for environmental benefits should be farm specific and reflect fuel reduction values expected for the specific farm operation and location. If the COMET tool is utilized, upload a copy of the completed form to DMS.</p>
378	Pond	<p>Ponds in support of livestock or irrigation practices may be allowed by the State Conservationist only after it has been determined to be the least cost alternative for meeting the required need.</p>

Alaska Environmental Quality Incentives Program (EQIP) Requirements 2023

380	Windbreak/Shelterbelt Establishment and Renovation	<p>Source Water Payment Rate is applicable when the following conditions are met:</p> <ul style="list-style-type: none"> - Project is located within source water quality area. To determine if your project is located in a SWPA area use the GIS layer SWPApriorities_ak - Practice addresses water quality and/or quantity -AND- protects drinking water sources - Practice is used to address one of the primary resource concerns: water quality degradation, insufficient water
382	Fence	Fence is ineligible if the sole purpose is to exclude pests, including species such as deer, feral hogs, wild animals, predators, rodents, or other animals from cropland.
382	Fence	Fence is ineligible if the sole purpose is to function as a boundary fence, separate ownership, or exclude domestic livestock from transportation networks or residential, commercial, or industrial areas.
382	Fence	End caps are part of the fence scenario, and required on all hollow pipe posts. End caps will not be contracted separately under Structure for Wildlife.
382	Fence	<p>Fence may be eligible if:</p> <ul style="list-style-type: none"> --To protect, restore, or enhance environmentally sensitive areas, such as a riparian areas or wetlands. --To facilitate a beneficial change in production system per section 530.403C(1) "Changes to Production System or Land Use"
382	Fence	Any application that includes structural or management practices related to grazing livestock, must also include a Grazing Management Plan as a part of the Conservation Plan and may include Prescribed Grazing (328) in the program application.
383	Fuel Break	If an EQIP schedule of operations includes forest-related conservation practices or activities on forest land, the participant must implement conservation practices and activities consistent with an approved forest management plan.
384	Woody Residue Treatment	If an EQIP schedule of operations includes forest-related conservation practices or activities on forest land, the participant must implement conservation practices and activities consistent with an approved forest management plan.
384	Woody Residue Treatment	If the practices are for the purposes of wildlife management a Wildlife Habitat Action Plan (WHAP) is required.

Alaska Environmental Quality Incentives Program (EQIP) Requirements 2023

390	Riparian Herbaceous Cover	<p>Source Water Payment Rate is applicable when the following conditions are met:</p> <ul style="list-style-type: none"> - Project is located within source water quality area. To determine if your project is located in a SWPA area use the GIS layer SWPAPriorities_ak - Practice addresses water quality and/or quantity -AND- protects drinking water sources - Practice is used to address one of the primary resource concerns: water quality degradation, insufficient water
391	Riparian Forest Buffer	<p>Source Water Payment Rate is applicable when the following conditions are met:</p> <ul style="list-style-type: none"> - Project is located within source water quality area. To determine if your project is located in a SWPA area use the GIS layer SWPAPriorities_ak - Practice addresses water quality and/or quantity -AND- protects drinking water sources - Practice is used to address one of the primary resource concerns: water quality degradation, insufficient water
393	Filter Strip	<p>Source Water Payment Rate is applicable when the following conditions are met:</p> <ul style="list-style-type: none"> - Project is located within source water quality area. To determine if your project is located in a SWPA area use the GIS layer SWPAPriorities_ak - Practice addresses water quality and/or quantity -AND- protects drinking water sources - Practice is used to address one of the primary resource concerns: water quality degradation, insufficient water
395	Stream Habitat Improvement and Management	If the practices are for the purposes of wildlife management a Wildlife Habitat Action Plan (WHAP) is required.
395	Stream Habitat Improvement and Management	High Priority Payment Rate applicable only when the practice is used to treat the resource concern 'Aquatic Habitat' for the target species of Salmon.
396	Aquatic Organism Passage	Aquatic Organism Passage is eligible when a barrier is preventing movement of fish or aquatic organisms.
396	Aquatic Organism Passage	Scenarios includes removal of barrier. Duplicate payment for obstruction removal is not allowed.
396	Aquatic Organism Passage	If the practices are for the purposes of wildlife management a Wildlife Habitat Action Plan (WHAP) is required.
396	Aquatic Organism Passage	High Priority Payment Rate applicable only when the practice is used to treat the resource concern 'Aquatic Habitat' for the target species of Salmon.

Alaska Environmental Quality Incentives Program (EQIP) Requirements 2023

420	Wildlife Habitat Planting	<p>When to use 327 vs 420? If the primary purpose is to address a wildlife habitat resource concern utilize the 420 practice. If the primary purpose is to address any other resource concern utilize the 327 practice.</p> <p>Please keep in mind the 420 practice allows for annuals in the mixture, while the 327 practice does not. If the main purpose is to address soil erosion but a secondary benefits to address wildlife habitat is sought, modify the 420 planting recommendation to meet seeding requirements for erosion control.</p>
420	Wildlife Habitat Planting	A Wildlife Habitat Action Plan (WHAP) is required.
422	Hedgerow Planting	If the practices are for the purposes of wildlife management a Wildlife Habitat Action Plan (WHAP) is required.
430	Irrigation Pipeline	<p>A conversion tool (lbs/foot) is available on the Alaska Programs SharePoint at: https://usdagcc.sharepoint.com/sites/nrcs_alaska/Programs/EQIP%20FY22</p>
430	Irrigation Pipeline	All 430 practices must have IWM-Practice Standard-449 contracted for a minimum of 3 years in conjunction with them.
436	Irrigation Reservoir	Tempering water is not an applicable resource concern.
436	Irrigation Reservoir	All 436 practices must have IWM-Practice Standard-449 contracted for a minimum of 3 years in conjunction with them.
441	Irrigation System, Microirrigation	A water quality test is required. At a minimum the following tests will be conducted: pH, electrical conductivity, hardness, total dissolved solids, alkalinity, sodium absorption ratio, and levels of magnesium, calcium, sodium, chloride, carbonates/bicarbonates, and boron.
441	Irrigation System, Microirrigation	Groundwater Testing may be used in conjunction with Microirrigation, if appropriate.
441	Irrigation System, Microirrigation	All 441 practices must have IWM-Practice Standard-449 contracted for a minimum of 3 years in conjunction with them.
441	Irrigation System, Microirrigation	Use Structure for Water Control (587) for Flowmeters.
442	Sprinkler System	All 442 practices must have IWM-Practice Standard-449 contracted for a minimum of 3 years in conjunction with them.

Alaska Environmental Quality Incentives Program (EQIP) Requirements 2023

449	Irrigation Water Management	<p>All conservation practice contract items that will be implemented as part of National On-Farm Energy will enter the energy benefits in ProTracts. If estimated values for ghg reductions are not available from an approved energy audit, they can be obtained from the COMET-Energy tool - utilize the link on the COMET home page http://comet-farm.com</p> <p>Information for environmental benefits should be farm specific and reflect fuel reduction values expected for the specific farm operation and location. If the COMET tool is utilized, upload a copy of the completed form to DMS.</p>
449	Irrigation Water Management	The number of irrigation water management plans per farm is determined by the engineer or conservation planner with Job Approval Authority. Fields that have similar management are typically included in the same IWM plan.
472	Access Control	Access Control is ineligible if the sole purpose is to function as a boundary fence, separate ownership, or exclude domestic livestock from transportation networks or residential, commercial, or industrial areas.
472	Access Control	Access Control is ineligible if the sole purpose is to exclude pests, including species such as deer, feral hogs, wild animals, predators, rodents, or other animals from cropland.
484	Mulching	When the main purpose is weed control, Herbaceous Weed Treatment (315) will be used.
490	Tree/Shrub Site Preparation	If an EQIP schedule of operations includes forest-related conservation practices or activities on forest land, the participant must implement conservation practices and activities consistent with an approved forest management plan.
490	Tree/Shrub Site Preparation	If the practices are for the purposes of wildlife management a Wildlife Habitat Action Plan (WHAP) is required.
500	Obstruction Removal	This practice is applicable when used to safely remove and dispose of unwanted obstruction in order to apply conservation practices or facilitate the planned land use.
512	Pasture and Hay Planting	When pH is at or below 5.0, success of grass planting may be inhibited, requiring lime. Soil test (buffer pH test included) should be taken to know if liming will be required. Coordination with the State Agronomist is recommended.
512	Pasture and Hay Planting	A minimum of 90 days rest from any access, cutting or grazing, after seeding is required to allow seedlings to establish adequate root structure for survival.
512	Pasture and Hay Planting	Any application that includes structural or management practices related to grazing livestock, must also include a Grazing Management Plan as a part of the Conservation Plan and may include Prescribed Grazing (328) in the program application.

Alaska Environmental Quality Incentives Program (EQIP) Requirements 2023

533	Pumping Plant	If an EQIP schedule of operations includes an animal waste storage or treatment facility on an animal feeding operation (AFO), the participant must have a NRCS-approved comprehensive nutrient management plan (CNMP) prior to implementation of any waste storage or treatment facility or associated nutrient management activities. The CNMP will account for resource concerns and conservation practices and activities planned for an AFO associated with storing, treating, land applying, or handling (transferring) of animal waste or organic byproducts, such as animal carcasses. The requirement for development of a CNMP only applies to an AFO here animals are kept and raised in confined situations. Refer to 530.405 for all requirements related to CNMPs.
550	Range Planting	A minimum of 90 days rest from any access, cutting or grazing, after seeding is required to allow seedlings to establish adequate root structure for survival.
550	Range Planting	Any application that includes structural or management practices related to grazing livestock, must also include a Grazing Management Plan as a part of the Conservation Plan and may include Prescribed Grazing (328) in the program application.
558	Roof Runoff Structure	State Conservation Engineer approval needed before assessing in CART when used as part of an irrigation system. Upload concurrence in DMS.
558	Roof Runoff Structure	With the exception of Note 2 ,this practice may be used to address building roof areas that contribute clean water runoff to an area of contamination, such as: livestock concentration, waste or feed storage facilities or leachate collection areas.
560	Access Road	Financial assistance if applicable when an Access Road is needed to properly install, operate, or maintain a conservation practice that is funded through a USDA program and is part of an existing conservation plan.
560	Access Road	For situations that do not meet note #1, approval from the SCE prior to the batching date is required. Upload concurrence in DMS.
560	Access Road	Payment Unit of both "ft" and "LnFt" = length of roadway measured in feet

Alaska Environmental Quality Incentives Program (EQIP) Requirements 2023

561	Heavy Use Area Protection	If an EQIP schedule of operations includes an animal waste storage or treatment facility on an animal feeding operation (AFO), the participant must have a NRCS-approved comprehensive nutrient management plan (CNMP) prior to implementation of any waste storage or treatment facility or associated nutrient management activities. The CNMP will account for resource concerns and conservation practices and activities planned for an AFO associated with storing, treating, land applying, or handling (transferring) of animal waste or organic byproducts, such as animal carcasses. The requirement for development of a CNMP only applies to an AFO here animals are kept and raised in confined situations. Refer to 530.405 for all requirements related to CNMPs.
570	Stormwater Runoff Control	Stormwater Runoff Control is intended for use with a Stormwater Pollution Prevention Plan (SWPPP).
570	Stormwater Runoff Control	Source Water Payment Rate is applicable when the following conditions are met: <ul style="list-style-type: none"> - Project is located within source water quality area. To determine if your project is located in a SWPA area use the GIS layer SWPApriorities_ak - Practice addresses water quality and/or quantity -AND- protects drinking water sources - Practice is used to address one of the primary resource concerns: water quality degradation, insufficient water
572	Spoil Disposal	Scenario "Hauled and Spread" requires movement of spoil via a truck.
574	Spring Development	Spring Development is not applicable for irrigation water supply.
574	Spring Development	Situations that are not clearly described in AK State Instruction 450 Part 401 require prior written approval from the State Conservation Engineer (SCE) before assessing in CART. Upload concurrence in DMS.
575	Trails and Walkways	If the practices are for the purposes of wildlife management a Wildlife Habitat Action Plan (WHAP) is required.
578	Stream Crossing	Stream Crossing replacements (bridges, culverts, etc.) are eligible when existing stream crossing is creating a fish passage barrier or water quality concern.
578	Stream Crossing	Road ditches are not eligible for Stream Crossings
578	Stream Crossing	All Federal, State, and Local laws and regulations pertaining to wetlands and stream encroachment must be followed.
578	Stream Crossing	"Low Water Crossing" scenario is used from OHW to OHW. Approach ramps should be contracted under Access Road or Trails and Walkways.
578	Stream Crossing	High Priority Payment Rate applicable only when the practice is used to treat the resource concern 'Aquatic Habitat' for the target species of Salmon.

Alaska Environmental Quality Incentives Program (EQIP) Requirements 2023

580	Streambank and Shoreline Protection	If willow staking is necessary for rock revetment or rock barb, Tree/Shrub Establishment (612) Scenario "Shrub Planting Live Stakes 500 per acre Minimum" should be used.
580	Streambank and Shoreline Protection	High Priority Payment Rate applicable only when the practice is used to treat the resource concern 'Aquatic Habitat' for the target species of Salmon.
587	Structure for Water Control	Flow meter is used in conjunction with Irrigation Water Management (449).
590	Nutrient Management	<p>If the Nutrient Management includes Animal Waste:</p> <p>If an EQIP schedule of operations includes an animal waste storage or treatment facility on an animal feeding operation (AFO), the participant must have a NRCS-approved comprehensive nutrient management plan (CNMP) prior to implementation of any waste storage or treatment facility or associated nutrient management activities. The CNMP will account for resource concerns and conservation practices and activities planned for an AFO associated with storing, treating, land applying, or handling (transferring) of animal waste or organic byproducts, such as animal carcasses. The requirement for development of a CNMP only applies to an AFO here animals are kept and raised in confined situations. Refer to 530.405 for all requirements related to CNMPs.</p>
590	Nutrient Management	Adaptive management shall follow Agronomy Technical Note No. 7
590	Nutrient Management	Adaptive management is a process of testing an idea to evaluate and adjust the application of a conservation practice over multiple seasons. The process allows for continued adjustments of the NRCS conservation practice standards to achieve better practice efficiency. Because adaptive management is asking a question, it is best to limit the variables so that reliable data can be measured and interpreted so the practice effectiveness can be properly evaluated. Therefore, only one adaptive management practice is allowed per land unit.
595	Pest Management Conservation System	Financial assistance if applicable when Jobsheet for 595 shows at least one resource concern will be addressed.

Alaska Environmental Quality Incentives Program (EQIP) Requirements 2023

612	Tree/Shrub Establishment	<p>The "Zones" in the scenario names are NOT plant hardiness zones.</p> <p>The zones refer to the Alaska Department of Natural Resources Division of Forestry Regions.</p> <p>A map of the regions is available on eFOTG, Section 1 - Maps https://efotg.sc.egov.usda.gov/references/public/AK/Alaska_Forest_Resources_%26_Practice_Regions.pdf</p>
612	Tree/Shrub Establishment	If an EQIP schedule of operations includes forest-related conservation practices or activities on forest land, the participant must implement conservation practices and activities consistent with an approved forest management plan.
612	Tree/Shrub Establishment	If the practices are for the purposes of wildlife management a Wildlife Habitat Action Plan (WHAP) is required.
614	Watering Facility	Heavy Use Area Protection for areas around the Water Facility are not included in the scenario and shall be contracted separately.
614	Watering Facility	Scenarios include escape ramps.
614	Watering Facility	Any application that includes structural or management practices related to grazing livestock, must also include a Grazing Management Plan as a part of the Conservation Plan and may include Prescribed Grazing (328) in the program application.
633	Waste Recycling	Waste Recycling is applicable when the waste can be processed and recycled to prevent a resource problem or provide a conservation benefit.
633	Waste Recycling	The waste recycling activity will be identified in a waste management system plan.

Alaska Environmental Quality Incentives Program (EQIP) Requirements 2023

633	Waste Recycling	<p>If the Waste Recycling includes Animal Waste:</p> <p>If an EQIP schedule of operations includes an animal waste storage or treatment facility on an animal feeding operation (AFO), the participant must have a NRCS-approved comprehensive nutrient management plan (CNMP) prior to implementation of any waste storage or treatment facility or associated nutrient management activities. The CNMP will account for resource concerns and conservation practices and activities planned for an AFO associated with storing, treating, land applying, or handling (transferring) of animal waste or organic byproducts, such as animal carcasses. The requirement for development of a CNMP only applies to an AFO here animals are kept and raised in confined situations. Refer to 530.405 for all requirements related to CNMPs.</p>
634	Waste Transfer	<p>If an EQIP schedule of operations includes an animal waste storage or treatment facility on an animal feeding operation (AFO), the participant must have a NRCS-approved comprehensive nutrient management plan (CNMP) prior to implementation of any waste storage or treatment facility or associated nutrient management activities. The CNMP will account for resource concerns and conservation practices and activities planned for an AFO associated with storing, treating, land applying, or handling (transferring) of animal waste or organic byproducts, such as animal carcasses. The requirement for development of a CNMP only applies to an AFO here animals are kept and raised in confined situations. Refer to 530.405 for all requirements related to CNMPs.</p>
635	Vegetated Treatment Area	<p>Use of this practice is limited to that time during the year when vegetation is actively growing. If contaminated runoff is expected at times when vegetation is not actively growing then practices other than PS-635 are needed to ameliorate the contaminated runoff.</p>
635	Vegetated Treatment Area	<p>Source Water Payment Rate is applicable when the following conditions are met:</p> <ul style="list-style-type: none"> - Project is located within source water quality area. To determine if your project is located in a SWPA area use the GIS layer SWPApriorities_ak - Practice addresses water quality and/or quantity -AND- protects drinking water sources - Practice is used to address one of the primary resource concerns: water quality degradation, insufficient water

Alaska Environmental Quality Incentives Program (EQIP) Requirements 2023

638	Water and Sediment Control Basin	<p>Source Water Payment Rate is applicable when the following conditions are met:</p> <ul style="list-style-type: none"> - Project is located within source water quality area. To determine if your project is located in a SWPA area use the GIS layer SWPAPriorities_ak - Practice addresses water quality and/or quantity -AND- protects drinking water sources - Practice is used to address one of the primary resource concerns: water quality degradation, insufficient water
642	Water Well	<p>Situations that are not clearly described in AK State Instruction 450 Part 401 require prior written approval from the State Conservation Engineer (SCE) before assessing in CART. Upload concurrence in DMS.</p> <p>AK State Instruction 450 Part 401: https://usdagcc.sharepoint.com/sites/nrcs_alaska/Programs/Shared%20Documents/Water%20Well%20and%20Spring%20Use.pdf</p>
642	Water Well	<p>Any application that includes structural or management practices related to grazing livestock, must also include a Grazing Management Plan as a part of the Conservation Plan and may include Prescribed Grazing (328) in the program application.</p>
644	Wetland Wildlife Habitat Management	<p>If the practices are for the purposes of wildlife management a Wildlife Habitat Action Plan (WHAP) is required.</p>
645	Upland Wildlife Habitat Management	<p>If the practices are for the purposes of wildlife management a Wildlife Habitat Action Plan (WHAP) is required.</p>
647	Early Successional Habitat Development-Mgt	<p>If an EQIP schedule of operations includes forest-related conservation practices or activities on forest land, the participant must implement conservation practices and activities consistent with an approved forest management plan.</p>
647	Early Successional Habitat Development-Mgt	<p>If the practices are for the purposes of wildlife management a Wildlife Habitat Action Plan (WHAP) is required.</p>
649	Structures for Wildlife	<p>The target species will be documented during the planning process.</p>
649	Structures for Wildlife	<p>The scenario "End Caps for Fence Posts" is applicable for existing fence only. The Fence (382) scenarios include end caps.</p>
649	Structures for Wildlife	<p>If the practices are for the purposes of wildlife management a Wildlife Habitat Action Plan (WHAP) is required.</p>

Alaska Environmental Quality Incentives Program (EQIP) Requirements 2023

650	Windbreak/Shelterbelt Renovation	<p>Source Water Payment Rate is applicable when the following conditions are met:</p> <ul style="list-style-type: none"> - Project is located within source water quality area. To determine if your project is located in a SWPA area use the GIS layer SWPApriorities_ak - Practice addresses water quality and/or quantity -AND- protects drinking water sources - Practice is used to address one of the primary resource concerns: water quality degradation, insufficient water
655	Forest Trails and Landings	<p>If an EQIP schedule of operations includes forest-related conservation practices or activities on forest land, the participant must implement conservation practices and activities consistent with an approved forest management plan.</p>
657	Wetland Restoration	<p>If the practices are for the purposes of wildlife management a Wildlife Habitat Action Plan (WHAP) is required.</p>
660	Tree-Shrub Pruning	<p>If an EQIP schedule of operations includes forest-related conservation practices or activities on forest land, the participant must implement conservation practices and activities consistent with an approved forest management plan.</p>
660	Tree-Shrub Pruning	<p>If the practices are for the purposes of wildlife management a Wildlife Habitat Action Plan (WHAP) is required.</p>
666	Forest Stand Improvement	<p>If an EQIP schedule of operations includes forest-related conservation practices or activities on forest land, the participant must implement conservation practices and activities consistent with an approved forest management plan.</p>
666	Forest Stand Improvement	<p>If the practices are for the purposes of wildlife management a Wildlife Habitat Action Plan (WHAP) is required.</p>
670	Energy Efficient Lighting System	<p>Lighting system improvements must be specifically recommended in a Type 2 On Farm Energy Audit.</p>

Alaska Environmental Quality Incentives Program (EQIP) Requirements 2023

670	Energy Efficient Lighting System	<p>All conservation practice contract items that will be implemented as part of National On-Farm Energy will enter the energy benefits in ProTracts. If estimated values for ghg reductions are not available from an approved energy audit, they can be obtained from the COMET-Energy tool - utilize the link on the COMET home page http://comet-farm.com</p> <p>Information for environmental benefits should be farm specific and reflect fuel reduction values expected for the specific farm operation and location. If the COMET tool is utilized, upload a copy of the completed form to DMS.</p>
672	Energy Efficient Building Envelope	<p>Building envelope improvements must be specifically recommended in a Type 2 On Farm Energy Audit.</p>
672	Energy Efficient Building Envelope	<p>All conservation practice contract items that will be implemented as part of National On-Farm Energy will enter the energy benefits in ProTracts. If estimated values for ghg reductions are not available from an approved energy audit, they can be obtained from the COMET-Energy tool - utilize the link on the COMET home page http://comet-farm.com</p> <p>Information for environmental benefits should be farm specific and reflect fuel reduction values expected for the specific farm operation and location. If the COMET tool is utilized, upload a copy of the completed form to DMS.</p>