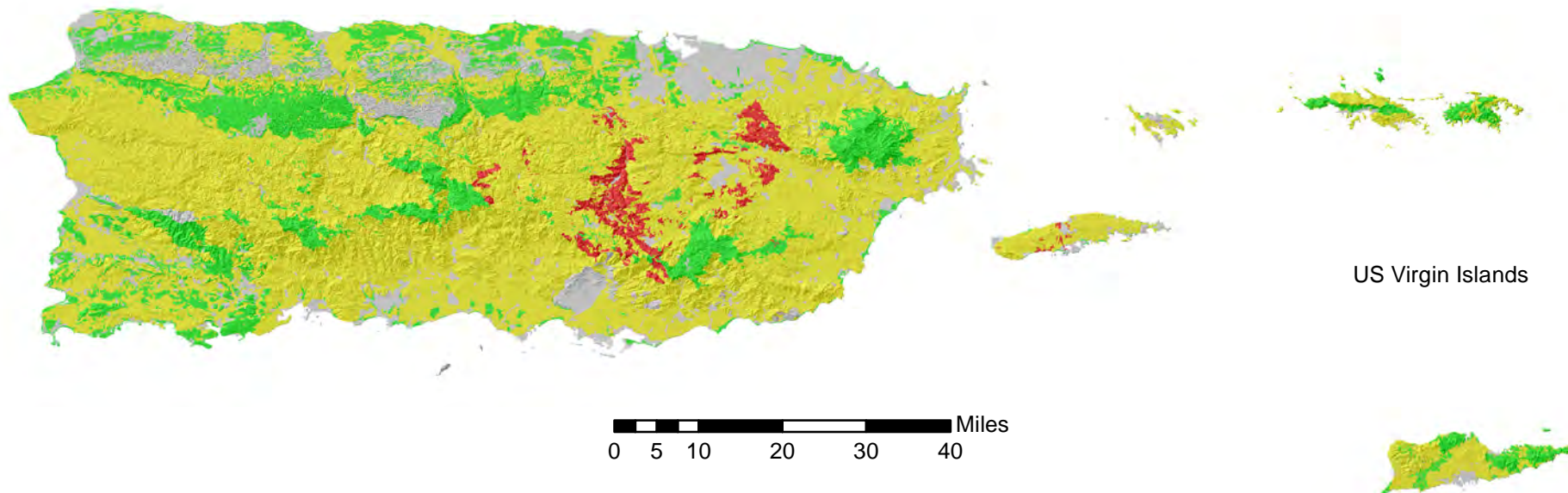




United States  
Department of  
Agriculture

# Soil Health - Soil Susceptibility to Compaction USDA-NRCS Caribbean Area

Puerto Rico



## Legend

### Rating

- High
- Medium
- Low
- Not rated or not available

### Summary

Soils are rated based on their susceptibility to compaction from the operation of ground-based equipment for planting, harvesting, and site preparation activities when soils are moist. Soil compaction is the process in which soil particles are pressed together more closely than in the original state. Typically, the soil must be moist to be compacted because the mineral grains must slide together. Compaction reduces the abundance mostly of large pores in the soil by damaging the structure of the soil. This produces several effects that are unwanted in agricultural soils since large pores are most effective at transmitting water and air through the soil. Compaction also increases the soil strength which can limit root penetration and growth. The ability of soil to hold water is adversely affected by compaction since the large pores hold water. The degree of compaction of a soil is measured by its bulk density, which is the mass per unit volume, generally expressed in grams per cubic centimeter.

