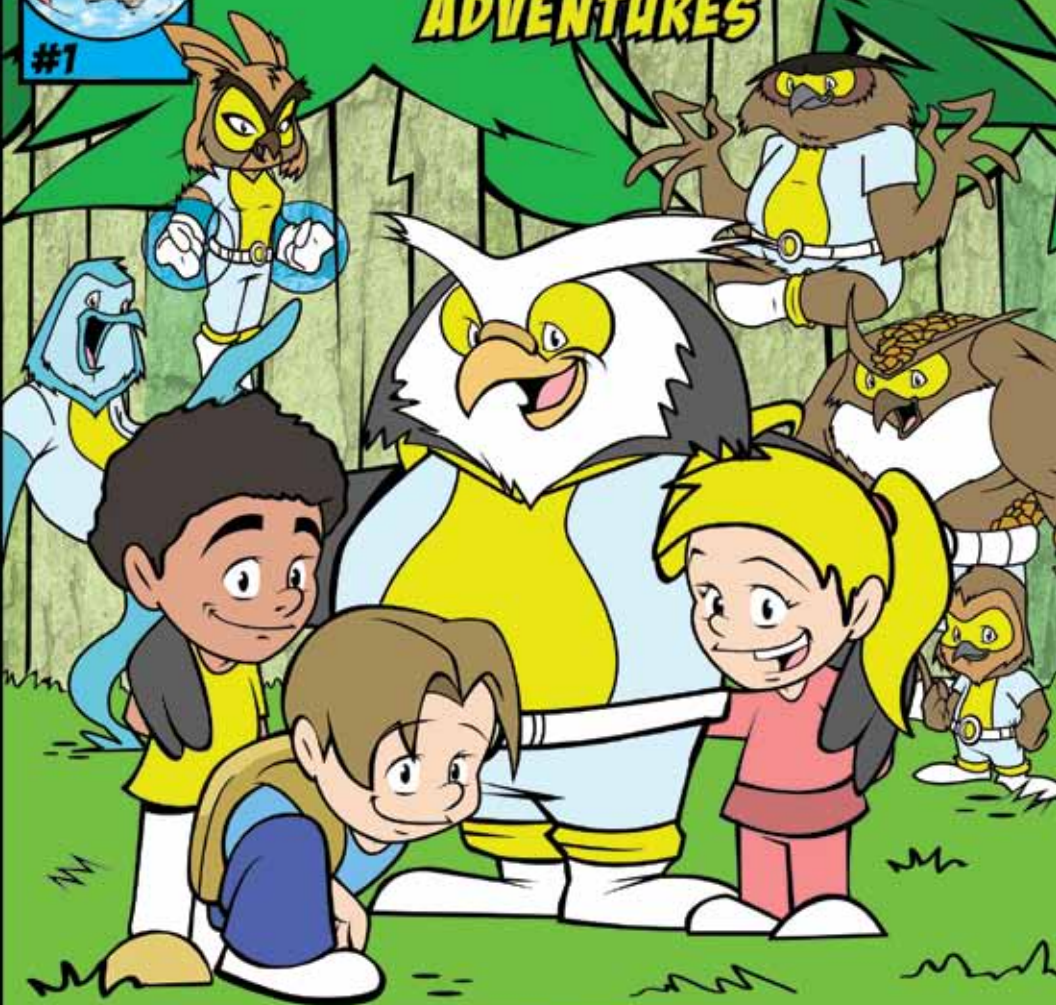




WHOBUDDIES

ADVENTURES



Mystery
of the sick stream

Story and characters created by Brad Harrison. Illustrations by Rodgon.
Published by USDA-Natural Resources Conservation Service, Des Moines,
Iowa. For additional copies, please call 515-284-4262.



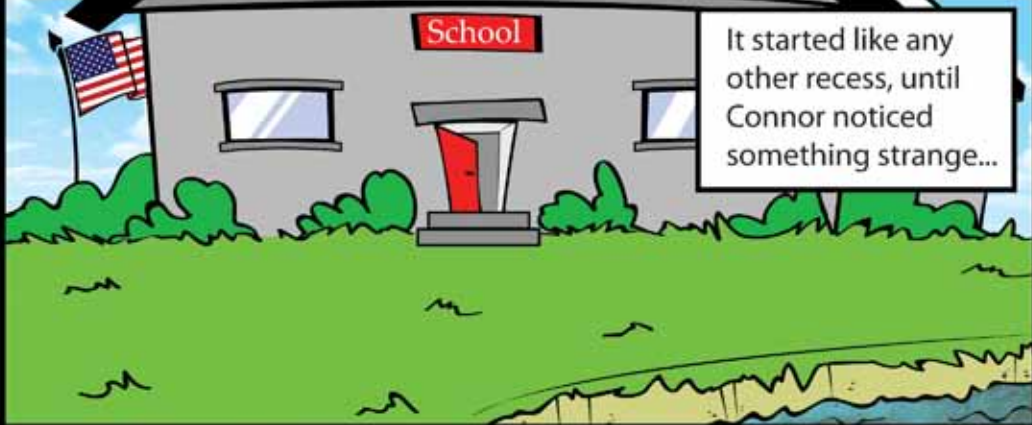
USDA is an equal opportunity provider and employer.

WHOBUDDIES

ADVENTURES

Mystery

of the Sick Stream





Ralph, the animals who live in the stream don't look so good...

They look kind of sick!

I see... I think I have some friends that can help.



A cartoon comic panel. In the upper left, a man with a mustache, wearing a blue cap and a blue short-sleeved shirt, is talking on a black telephone. He is holding the receiver to his ear with his right hand and has his left hand raised near his face. He is standing behind a wooden desk. On the desk is a white telephone base with a coiled cord. In the background, there is a brown door with a white rectangular window. A large yellow diagonal line separates the man's scene from the penguin's scene below. In the lower right, a penguin wearing a light blue lab coat is also talking on a black telephone. He is holding the receiver to his beak with his right hand and has his left hand raised, showing a blue wristband. He has a surprised or excited expression. To the left of the penguin is a green, round object with a yellow smiley face. Two speech bubbles are present: one from the man and one from the penguin.

Hello Ninox.

The students are worried about the animals living in the stream.

They say the animals look sick and the water looks bad.

Ralph-Old friend, I agree, it sounds like trouble.

We all need to meet and investigate. I'll call the others.



The animals look so sad...

See, the stream doesn't look right.

The water looks dirty.



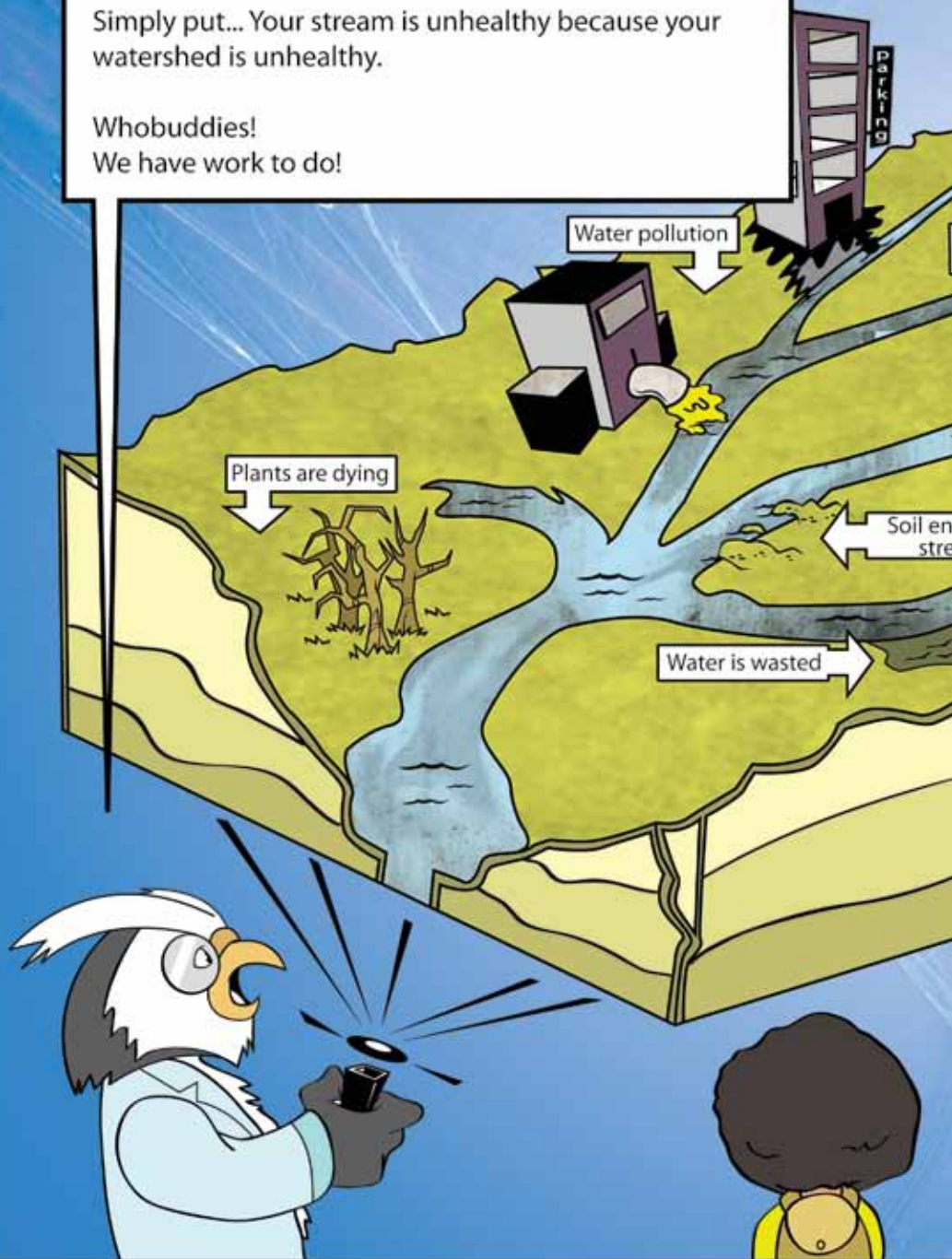
You're right kids.

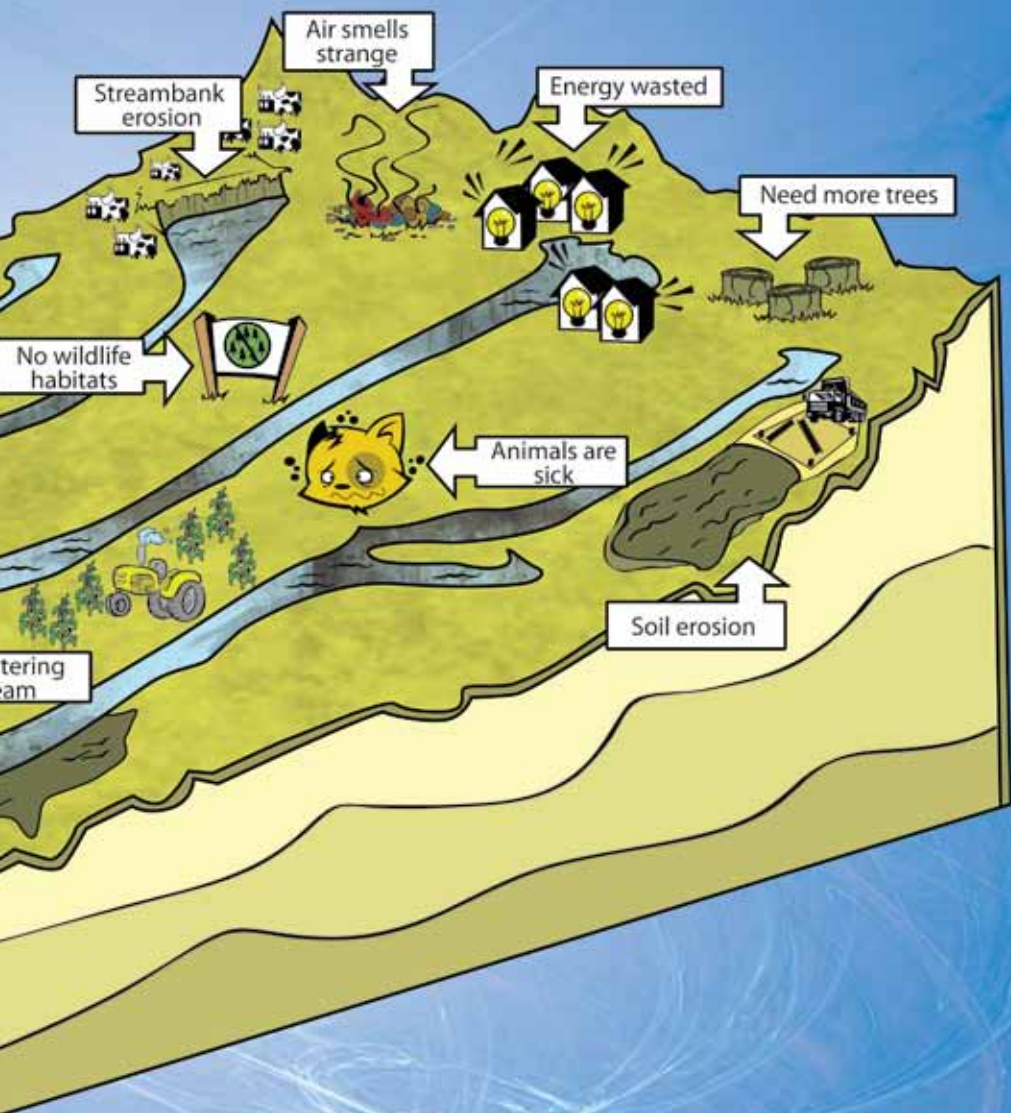
Something is very wrong. We need to take a closer look with a special tool I brought with me.

The scan is showing numerous problems.
See the land above your stream and how the water
flows through it? That is called a watershed, and it is
very important to your stream.

Simply put... Your stream is unhealthy because your
watershed is unhealthy.

Whobuddies!
We have work to do!





Suddenly, without hesitation, the Whobuddies join together the power of all our natural resources to become conservation heroes ready to jump into action!

RESO
UN
NO



**SOURCES
ITE
W!!!!**



AIR



SOIL

PLANTS





All animals
need food,
clean water,
and a nice
place to live!



Healthy plants
next to a
stream keeps
the water
clean!



Strong trees
make the air
better to
breathe!





Conserve water every day in every way you can!



Wind power is one great renewable energy source!



Always work hard to keep the soil from eroding!



We are off to a good start.
Some of the problems have been fixed, but more work needs to be
done. Are you all willing to pitch in to help your watershed become
healthier?

Yes we are!
You can count on us!

Good! We must continue
to all work together!





We have to go now to another natural resource emergency, but we will be back to help again!

Keep up the good work!



You can be a conservation hero too!

- Get involved in helping your environment.
- Share what you know about resources.
- Do your best to conserve and protect our earth.

