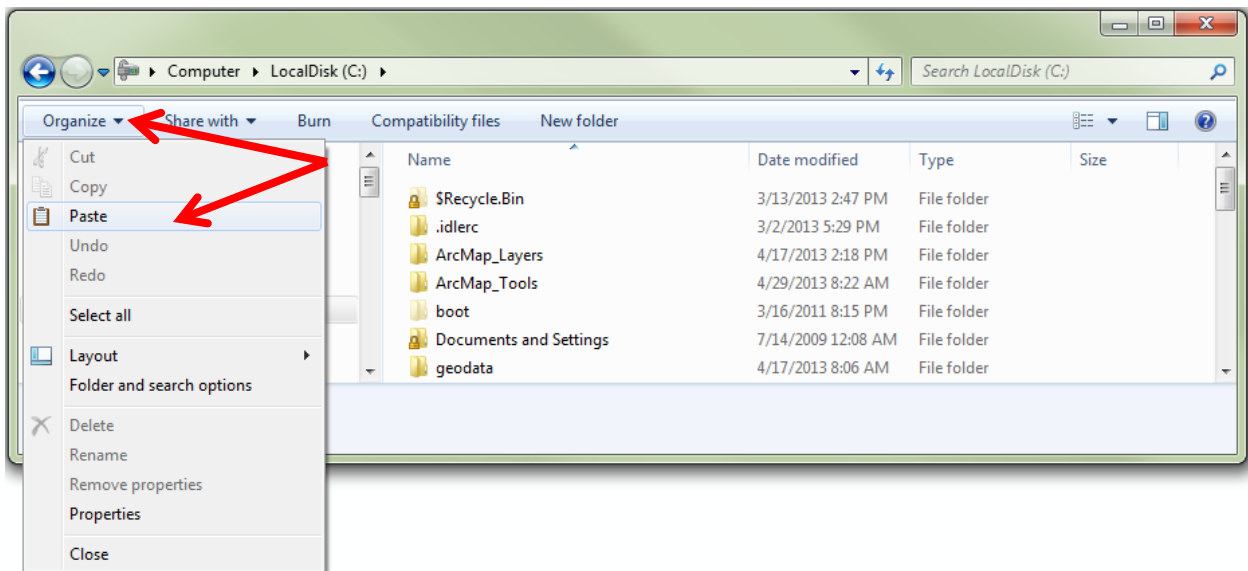
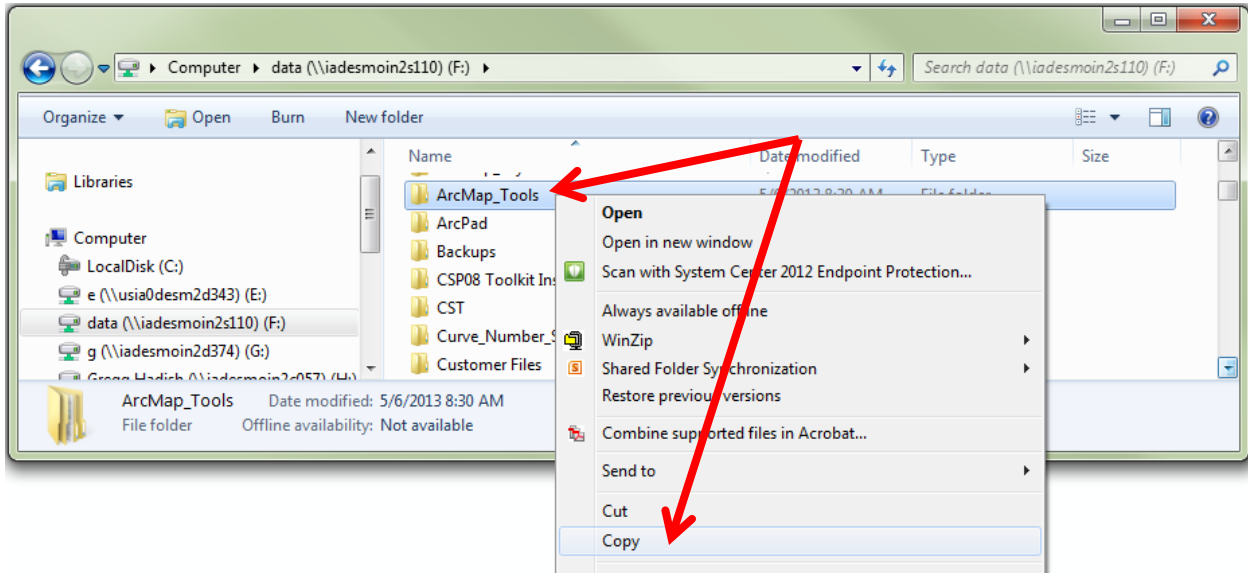


Instructions for Adding the NRCS Soils and Engineering Tools to ArcMap 10

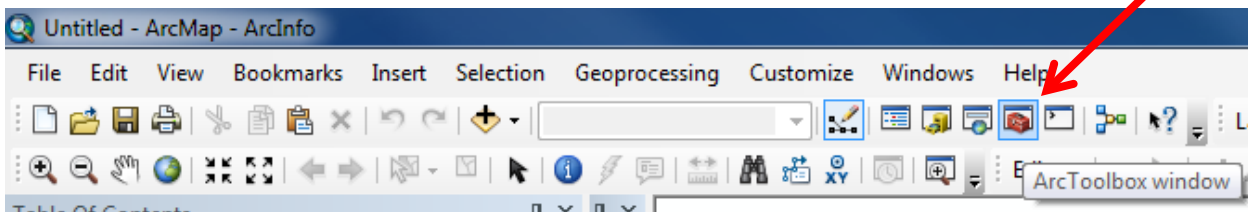
1. In Windows Explorer:

- a. Open F:\ then right-click the folder **ArcMap_Tools**, and select **Copy**
- b. Open C:\ select **Organize > Paste**. You should now have a folder called C:\ArcMap_Tools

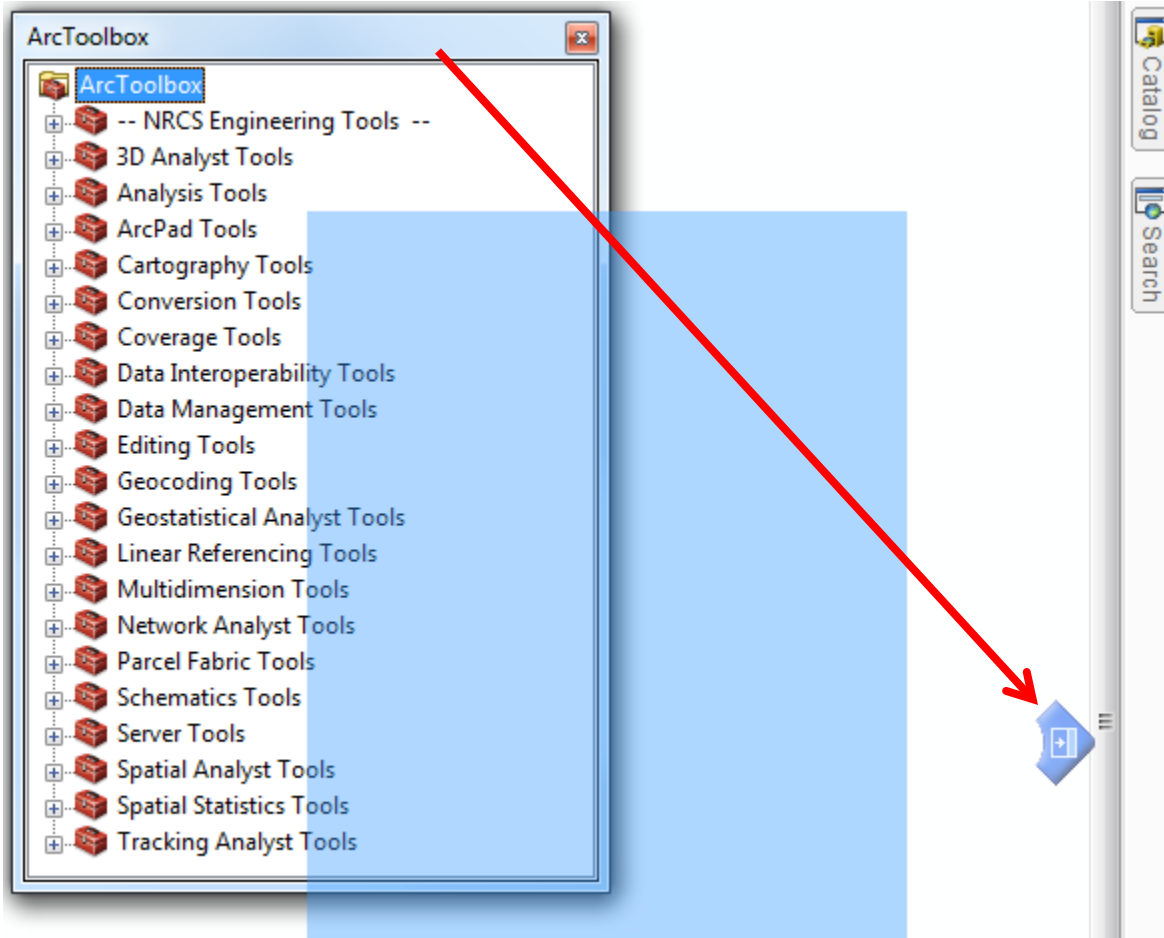


2. In ArcMap 10:

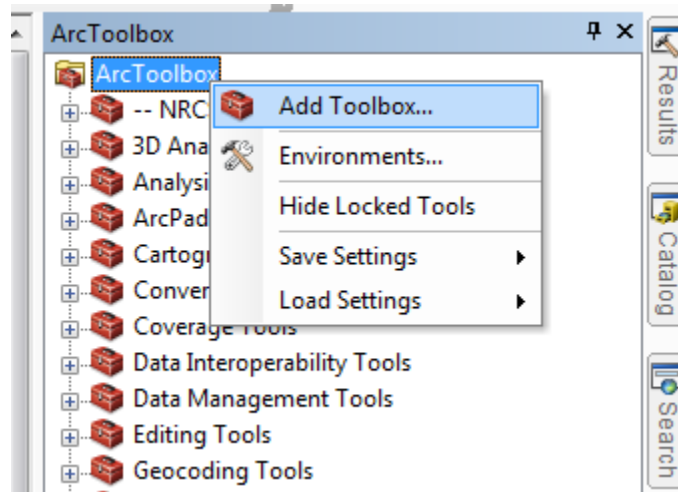
- a. Click the **ArcToolbox window** button



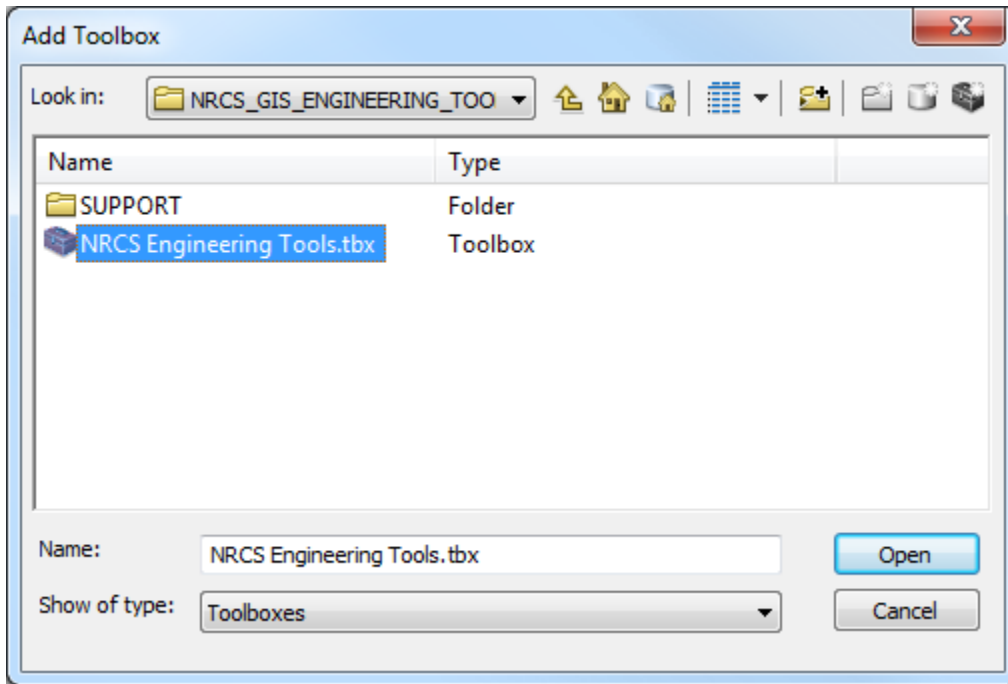
b. Drag the ArcToolbox window and dock it on the right side of your screen



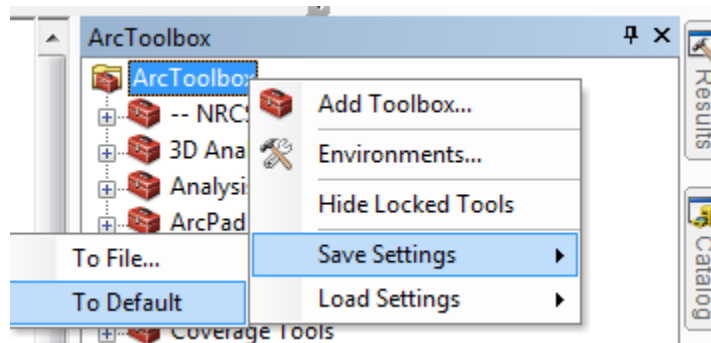
c. Right-click **ArcToolbox** and select **Add Toolbox...**



- d. Navigate to **C:\ArcMap_Tools\NRCS_GIS_ENGINEERING_TOOLS**; select **NRCS Engineering Tools.tbx** and select **Open**. Repeat and add **C:\ArcMap_Tools\NRCS_Soils_Tools\NRCS Soils Tools.tbx**



- e. Right-click on **ArcToolbox** > **Save Settings** > **To Default**



The NRCS Soils and Engineering Tools for ArcMap 10 are now available for use.

For support questions, contact Gregg Hadish, State GIS Specialist at

Gregg.Hadish@ia.usda.gov or (515) 323-2234