

NRCS Tribal Summit

March 16-17, 2022

Virginia Department of Conservation and Recreation

Division of Natural Heritage

Tyler Meader, Locality Liaison



Natural Heritage Program

Our mission-To conserve Virginia's biodiversity through inventory, protection, and stewardship



Natural Heritage Resources

- Rare plants and animals
- Rare and exemplary natural communities
- Significant caves and karst features

Inventory



Zoologists



Karst Specialists



Botanists



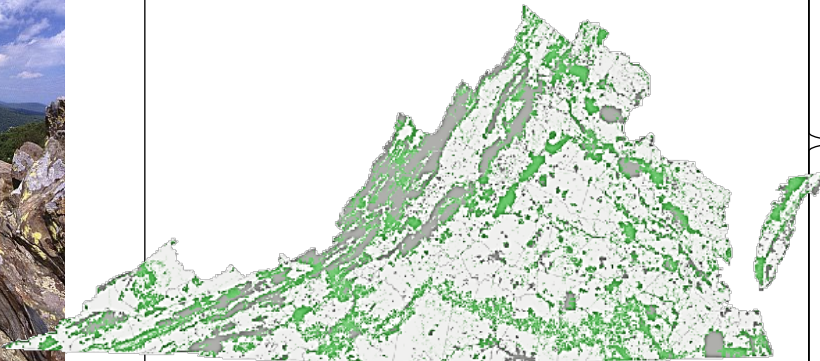
Ecologists

Information Management

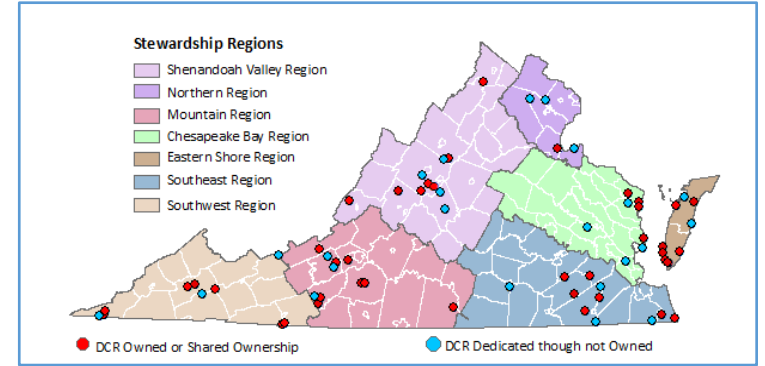
NatureServe
BIOTICS5 - biodiversity data management

Conservation Lands Database: analysis, mapping and modeling for conservation planning and data dissemination

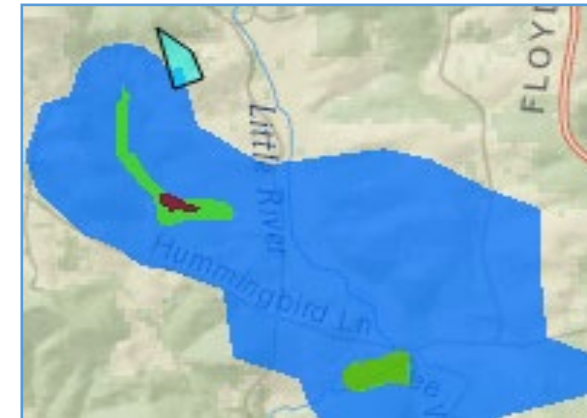
(e.g. Conserve Virginia)



Protection

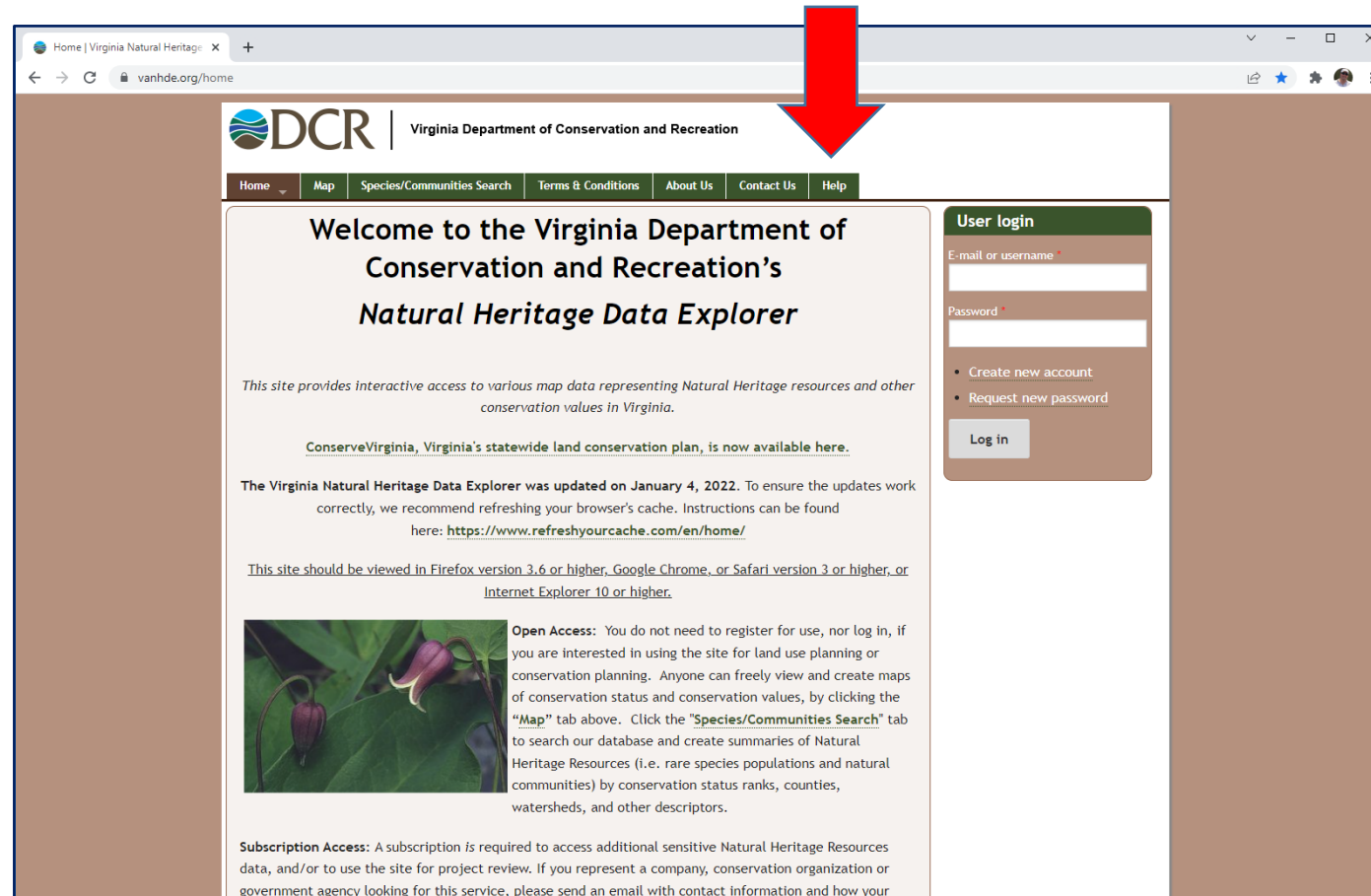


Environmental Review



Natural Heritage Data Explorer (NHDE)

<https://vanhde.org/home>



The screenshot shows the home page of the Virginia Natural Heritage Data Explorer (NHDE) website. The browser address bar displays "vanhde.org/home". The page header features the DCR logo and the text "Virginia Department of Conservation and Recreation". A navigation menu includes links for Home, Map, Species/Communities Search, Terms & Conditions, About Us, Contact Us, and Help. A large red arrow points to the DCR logo. The main content area contains a welcome message, a user login form, and information about the site's update and access policies.

Welcome to the Virginia Department of Conservation and Recreation's *Natural Heritage Data Explorer*

This site provides interactive access to various map data representing Natural Heritage resources and other conservation values in Virginia.

[ConserveVirginia, Virginia's statewide land conservation plan, is now available here.](#)

The Virginia Natural Heritage Data Explorer was updated on January 4, 2022. To ensure the updates work correctly, we recommend refreshing your browser's cache. Instructions can be found here: <https://www.refreshyourcache.com/en/home/>

[This site should be viewed in Firefox version 3.6 or higher, Google Chrome, or Safari version 3 or higher, or Internet Explorer 10 or higher.](#)

Open Access: You do not need to register for use, nor log in, if you are interested in using the site for land use planning or conservation planning. Anyone can freely view and create maps of conservation status and conservation values, by clicking the "Map" tab above. Click the "Species/Communities Search" tab to search our database and create summaries of Natural Heritage Resources (i.e. rare species populations and natural communities) by conservation status ranks, counties, watersheds, and other descriptors.

Subscription Access: A subscription is required to access additional sensitive Natural Heritage Resources data, and/or to use the site for project review. If you represent a company, conservation organization or government agency looking for this service, please send an email with contact information and how your

User login

E-mail or username *

Password *

[Create new account](#)

[Request new password](#)

Log in

Map | Virginia Natural Heritage | vanhde.org/content/map

DCR | Virginia Department of Conservation and Recreation

Home | **Map** | Species/Communities Search | Terms & Conditions | About Us | Contact Us | Help

Switch Basemap | Add Resources

Layers | Make a Map | Feature Search

- Managed Conservation Lands
 - Managed Conservation Lands
- ConserveVirginia v3.0
 - ConserveVirginia v3.0
- Conservation Planning
 - Potential Rare Species Richness
 - Ecological Cores
 - Natural Land Network
 - Forest Conservation Values
 - Watershed Model
 - Nature-based Recreation Access Model
 - Cultural Resource Preservation Index
 - Agricultural Model
 - Development Vulnerability Model
- Reference Layers
 - 24K Grid
 - National Wetlands Inventory
 - Scenic Rivers
 - VDE Sinkholes
 - Streams (NHD)
 - Trails
 - USGS Placenames
 - VDOT Roads
- Boundaries
 - Counties
 - Physiographic Provinces
 - Planning Districts
 - Subwatersheds (12 digit USGS)
 - Watersheds (8 digit USGS, subbasin)
 - Virginia Boundary

Find address or place

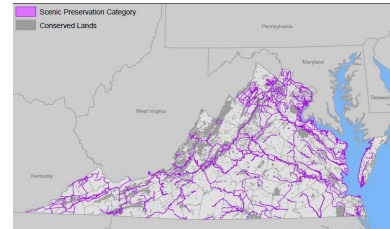
Scale: 1 : 4,622,324
Latitude: 35.1309, Longitude: -76.8588

National Geographic, Esri, Garmin, HERE, UNEP-WCMC, USGS, NASA, ESA, METI, NRCAN, ...

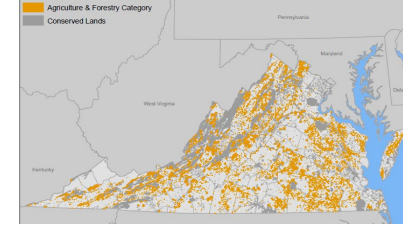
ConserveVirginia v3.0

- Twenty four (24) priority layers contributed from state and federal agencies and conservation organizations
- Consolidated into 7 categories
- Included in VLCF Grant Manual and Application

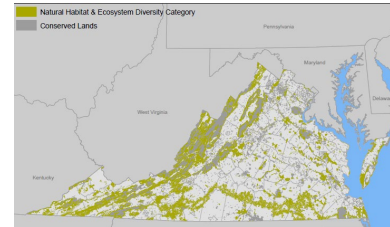
SCENIC PRESERVATION



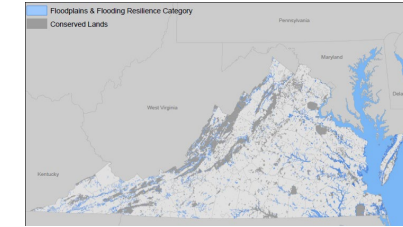
AGRICULTURE AND FORESTRY



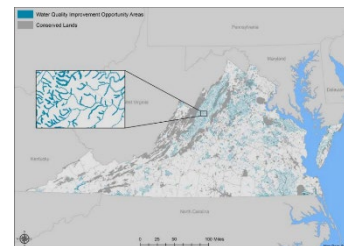
NATURAL HABITAT AND ECOSYSTEM DIVERSITY



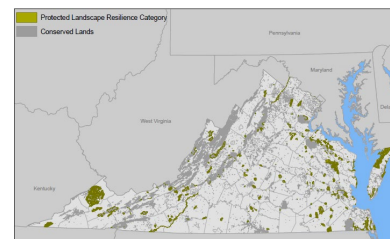
FLOODPLAINS AND FLOODING RESILIENCE



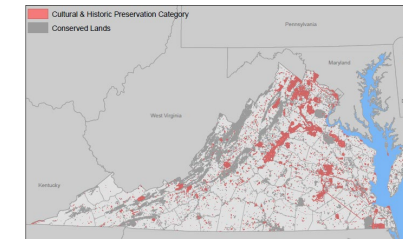
WATER QUALITY IMPROVEMENT



PROTECTED LANDSCAPES RESILIENCE



CULTURAL AND HISTORIC PRESERVATION



Conserve Virginia Data Providers



ConserveVirginia in VLCF Grant Manual and Application

Virginia Land Conservation Foundation

June 2021 Grant Manual (FY22 Program Year)

Important ConserveVirginia Information: Please provide a screen shot of your project mapped in ConserveVirginia with your application. Updates to ConserveVirginia are expected to occur while this grant round is open. We want to award your project all of the points it deserves! We will award points for ConserveVirginia if your project appears in either version and you include a screenshot of your project for each intersecting layer of ConserveVirginia. If you believe your project should be included in ConserveVirginia, please provide information that justifies its inclusion and contact the agency experts listed on pages 4 through 10.

Please note: grant applications will only be accepted electronically.

Adoption Date: June 10, 2021

I. Does the project intersect ConserveVirginia layers in addition to the Primary VLCF Application Category for your project?

Yes No

If yes, is the landowner agreeable to language being inserted in the deed for the project that will protect the associated resources in order to be awarded additional points for each confirmed intersecting layer?

Yes No

7. Maps and ConserveVirginia

- A. Insert immediately below an aerial map to show the geographic location of the project. The map should show the shape of the planned project in relation to adjacent/nearby conserved lands.
- B. Insert immediately below a topographic map for the project. The map should show the shape of the planned project in relation to adjacent/nearby conserved lands. (DO NOT insert the entire topographic quad map available from the US Geological Survey. Instead, show your project area on the USA Topo Maps basemap found in the Natural Heritage Data Explorer located at <https://vanhde.org/>)
- C. Insert immediately below screenshots of ConserveVirginia layers that intersect your project.

Does the property fall within one or more layers of ConserveVirginia? (click all that apply)

- | | |
|--|--|
| <input type="checkbox"/> Agriculture | <input type="checkbox"/> Natural Habitat and Ecosystem Diversity |
| <input type="checkbox"/> Forestry | <input type="checkbox"/> Floodplains and Flooding Resilience |
| <input type="checkbox"/> Cultural and Historic | <input type="checkbox"/> Scenic Preservation |
| <input type="checkbox"/> Protected Landscapes Resilience | <input type="checkbox"/> Water Quality |



Switch Basemap Add Resources

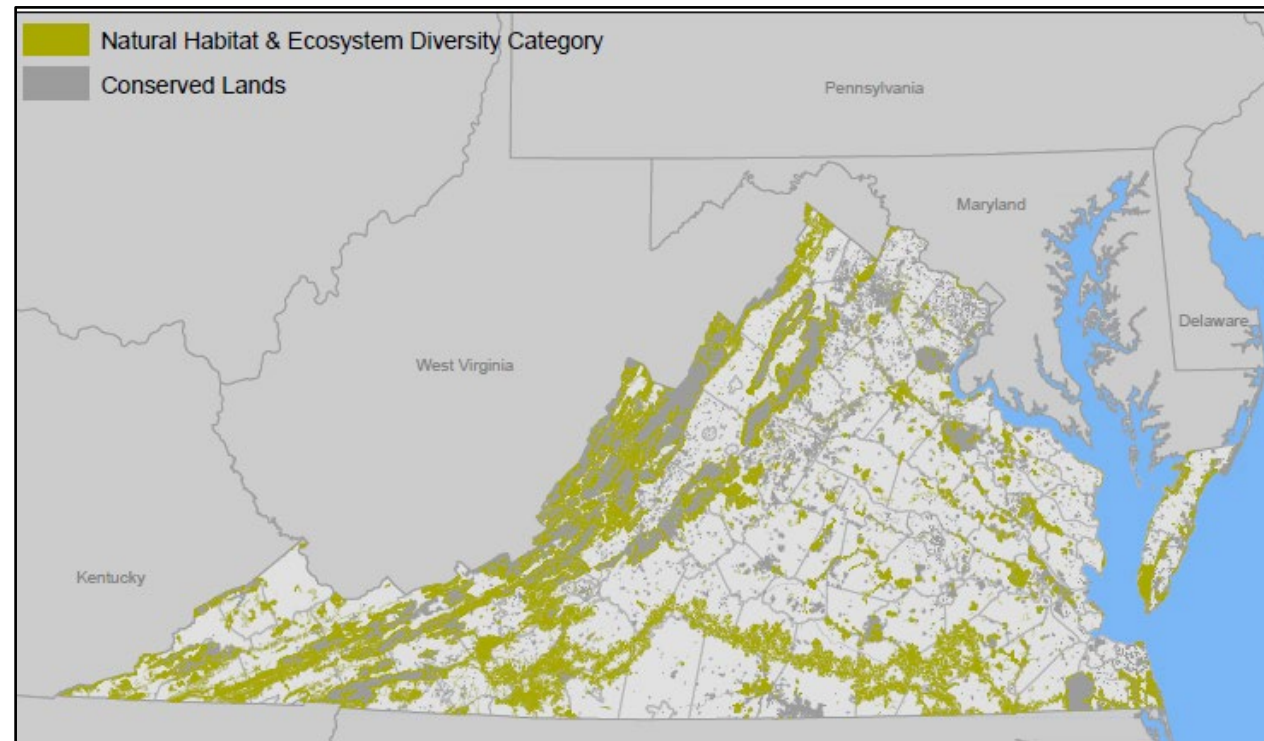
Find address or place

Layers | Make a Map | Feature Search

- Managed Conservation Lands
 - Managed Conservation Lands
- ConserveVirginia v3.0
 - ConserveVirginia v3.0
 - ConserveVirginia Map
 - Agriculture & Forestry Category
 - Natural Habitat & Ecosystem Diversity Category
 - Floodplains & Flooding Resilience Category
 - Cultural & Historic Preservation Category
 - Scenic Preservation Category
 - Protected Landscapes Resilience Category
 - Water Quality Improvement Category
- Conservation Planning
 - Potential Rare Species Richness
 - Ecological Cores
 - Natural Land Network
 - Forest Conservation Values
 - Watershed Model
 - Nature-based Recreation Access Model
 - Cultural Resource Preservation Index
 - Agricultural Model
 - Development Vulnerability Model

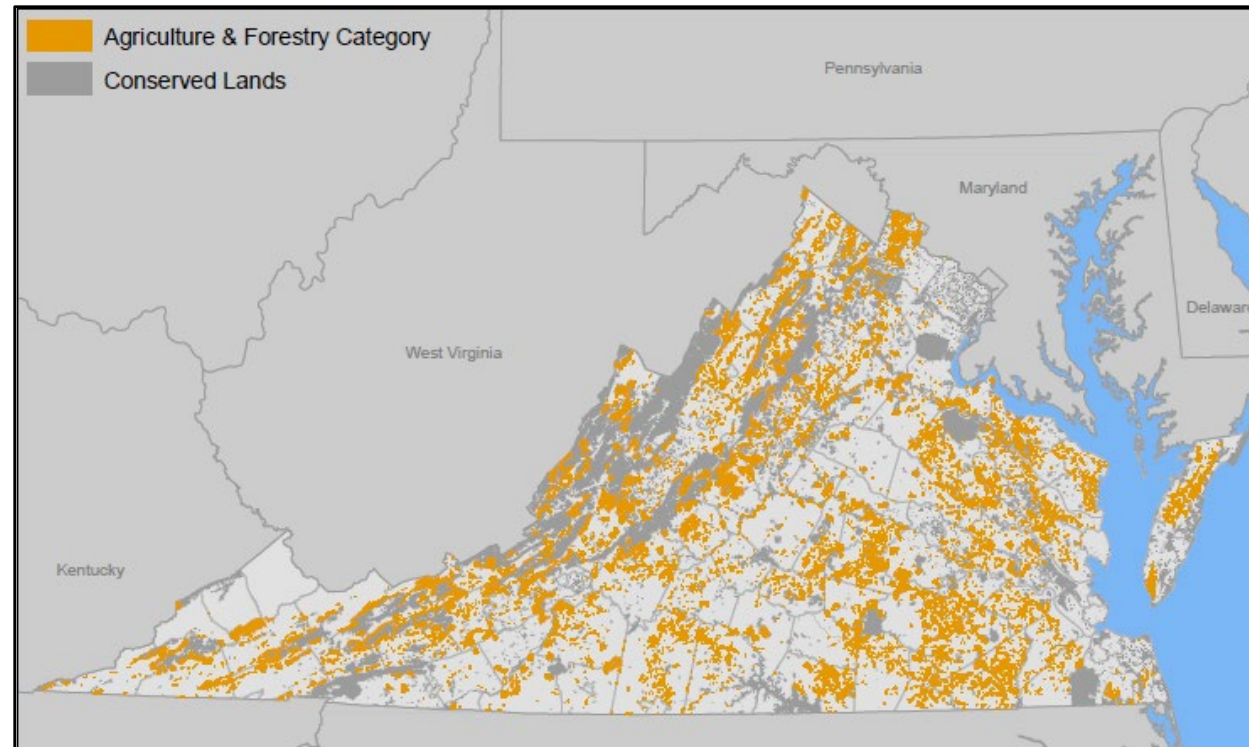
Natural Habitat & Ecosystem Diversity

- Natural Landscape Assessment C1 Cores
- Resilient & Connected Landscapes
- Landscape Corridors
- Natural Heritage Conservation Sites
- Brook Trout Streams



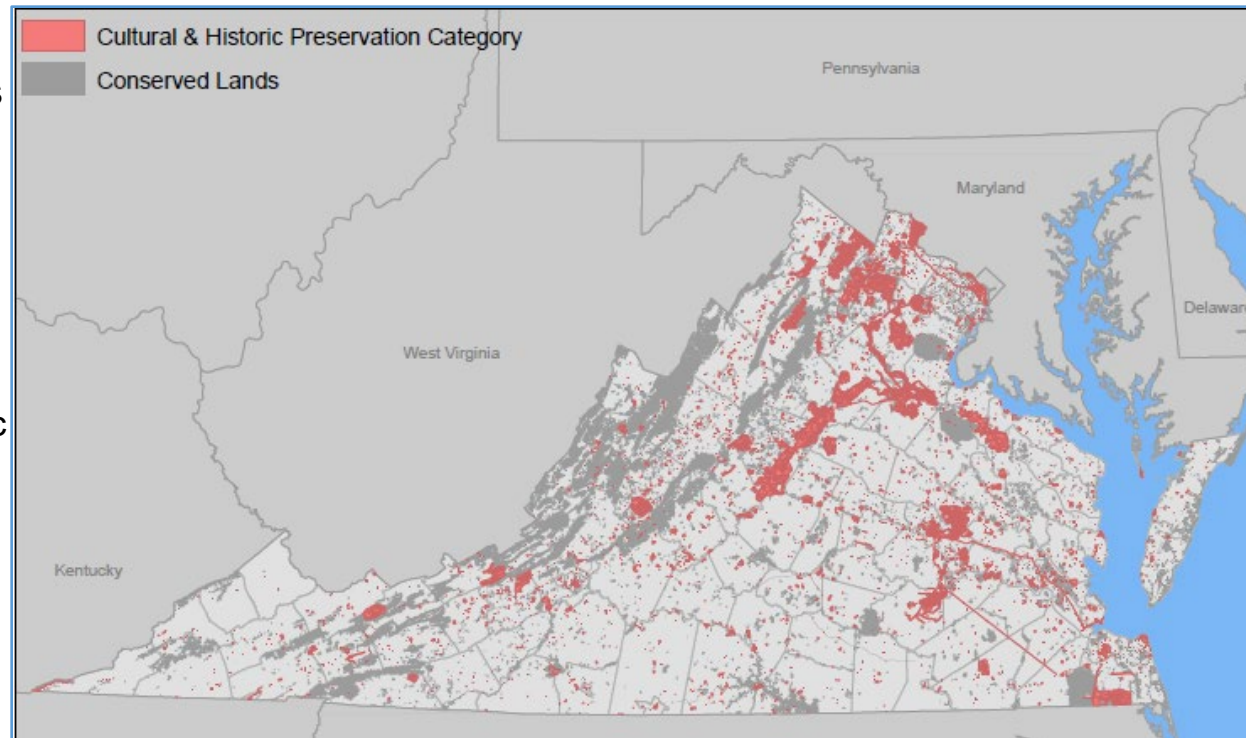
Agriculture & Forestry

- ConservationVision Agriculture Model – Soil Suitability, Land Cover & Travel Time to Market
- Forest Conservation Values Model (DOF) - highest quality, most productive, and most vulnerable forestland
- American Farmland Trust- Working farms facing threat of development



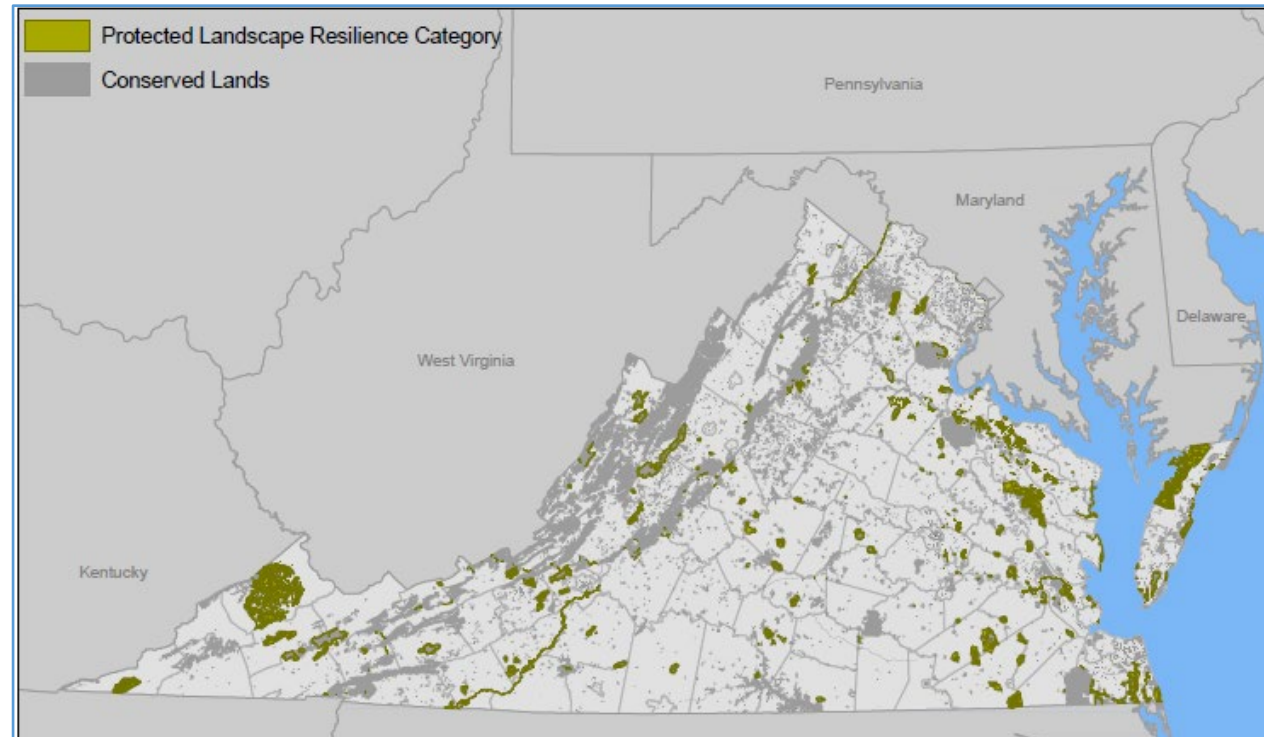
Cultural & Historic Preservation

- National Historic Landmarks
- Battlefield Study Areas
- Areas on or with potential eligibility for:
 - Natl. Register of Historic Places
 - VA Landmarks Registry



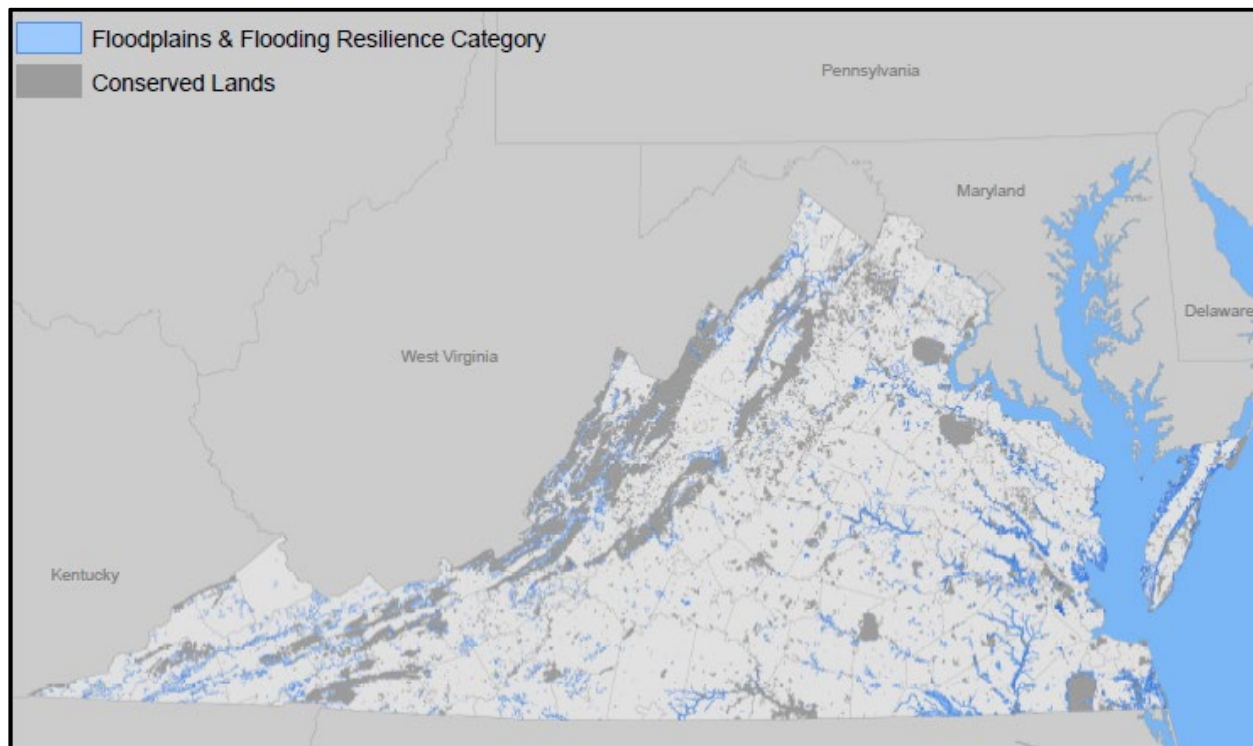
Protected Landscapes Resilience

- Priority areas most critical to resilience of protected lands under ownership of:
 - USFWS
 - National Park Service
 - USFS
 - Virginia DWR
 - Virginia DCR
 - Virginia DOF



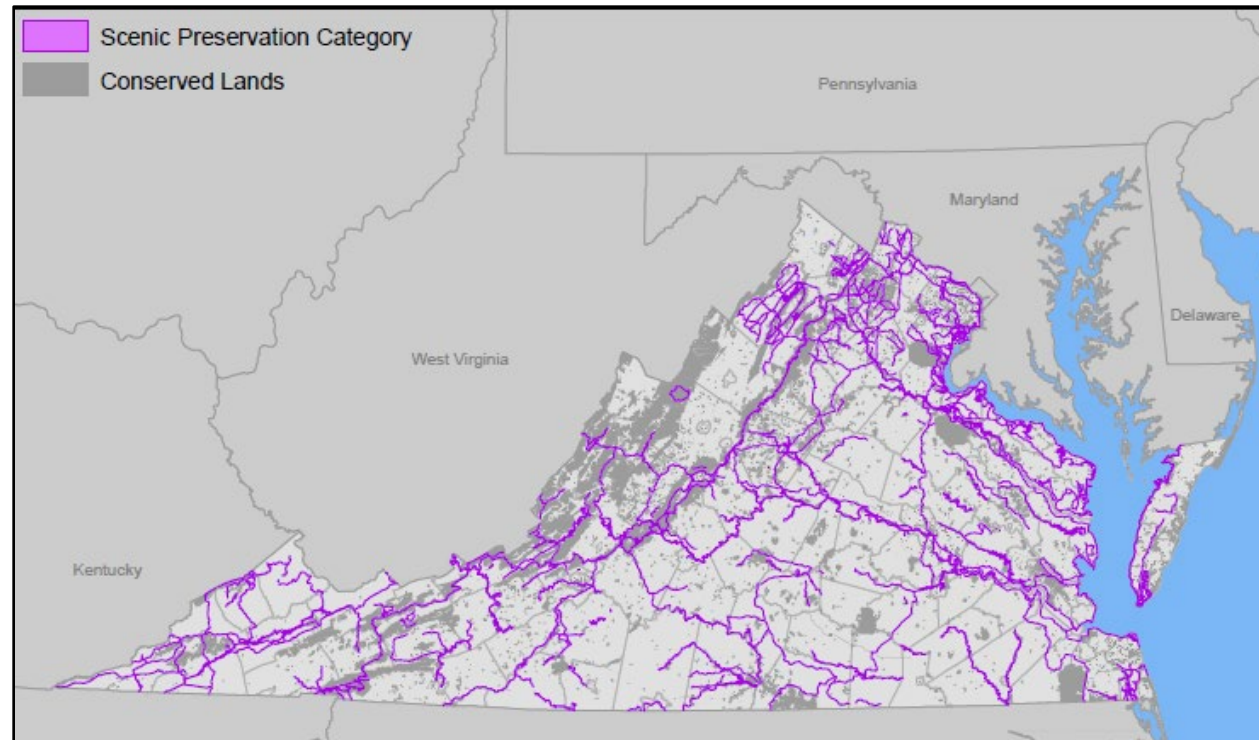
Floodplains & Flooding Resilience

- Riverine Flooding – undeveloped forest and ag lands upstream of the 10 worst flooding disasters
- Virginia Wetlands Catalog – mapped and predicted wetlands, streams and floodplains – top two classes
- Coastal Wetlands Values
- Coastal Flooding – Coastal Ecological Resiliency (TNC) and VIMS' Marsh Migration and Marsh Building Model



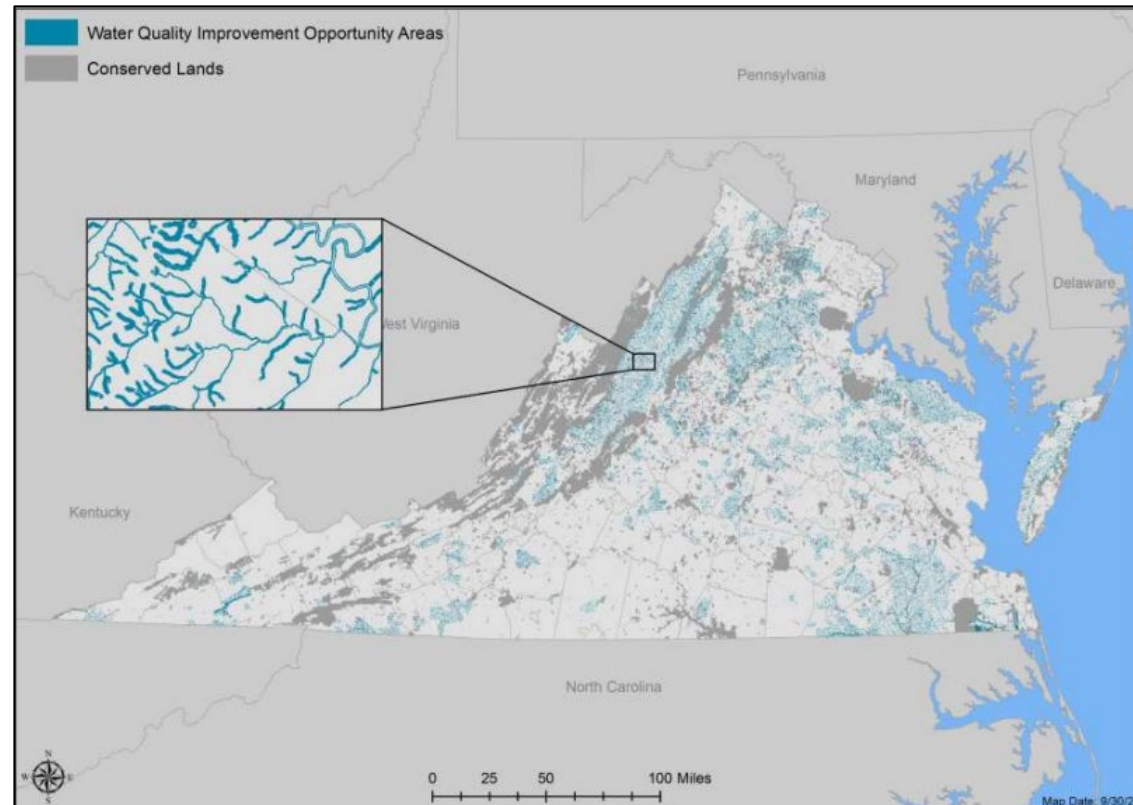
Scenic Preservation

- National and State Designated Scenic Byways
- State Designated Scenic Rivers
- All-American Roads
- National Scenic Trails
- National Historic Trails
- National Millennium Trails
- National Recreational Trails



Water Quality Improvement

- **Water Quality Improvement-**
788, 974 acres of riparian areas along waterways with the highest estimates of nitrogen, phosphorus, and sediment loadings from agricultural sources from the Chesapeake Bay Program Phase 6 Watershed Model
- **Aquatic Life Conservation-**
340,938 acres of riparian areas along waterways rated in the top 5% for water quality
- **Healthy Waters Conservation-**
186,653 acres of riparian areas that drain into highest ranked “Healthy Water” based on fish and macroinvertebrate populations
- **Restoration Candidate BMP-**
156,089 acres where Ag BMP’s will lead to greatest improvement



Map | Virginia Natural Heritage | vanhde.org/content/map

DCR | Virginia Department of Conservation and Recreation

Home | Map | Species/Communities Search | Terms & Conditions | About Us | Contact Us | Help

Switch Basemap | Add Resources | Find address or place

Layers | Make a Map | Feature Search

- Managed Conservation Lands
 - Managed Conservation Lands
- ConserveVirginia v3.0
 - ConserveVirginia v3.0
 - ConserveVirginia Map
 - Agriculture & Forestry Category
 - Natural Habitat & Ecosystem Diversity Category
 - Floodplains & Flooding Resilience Category
 - Cultural & Historic Preservation Category
 - Scenic Preservation Category
 - Protected Landscapes Resilience Category
 - Water Quality Improvement Category
- Conservation Planning
 - Potential Rare Species Richness
 - Ecological Cores
 - Natural Land Network
 - Forest Conservation Values
 - Watershed Model
 - Nature-based Recreation Access Model
 - Cultural Resource Preservation Index
 - Agricultural Model
 - Development Vulnerability Model
- Reference Layers
 - 24K Grid
 - National Wetlands Inventory
 - Scenic Rivers
 - VDE Sinkholes
 - Streams (NHD)

Click to identify by point

Identify

Select a resource and click on map to identify

Identify Visible Resources

Identify On: Visible Layers in Resource

Identify By: Point

Show Identify Graphic

Details (4 of 5): ConserveVirginia v3.0 - 0: ConserveVirginia Map - 9/1/2021

Layer: ConserveVirginia v3.0
 Sub-Layer: 0: ConserveVirginia Map
 Agriculture and Forestry: YES
 Cultural and Historic Preservation: NO
 Natural Habitat and Ecosystem Diversity: NO
 Protected Landscapes Resilience: NO
 Scenic Preservation: NO
 Floodplains and Flooding Resilience: YES
 Water Quality Improvement: NO
 Map Date: 9/1/2021

Zoom | Flash | 4 / 5 | Tasks

Latitude: 37.9790, Longitude: -76.8694

National Geographic, Esri, Garmin, HERE, UNEP-WCMC, USGS, NASA, ESA, METI, NRC...





Map | Virginia Natural Heritage | vanhde.org/content/map

DCR | Virginia Department of Conservation and Recreation

Home | **Map** | Species/Communities Search | Terms & Conditions | About Us | Contact Us | Help

Switch Basemap | Add Resources

Layers | **Make a Map** | Feature Search

Drawing Type: Polygons

Annotation Settings

Fill Style: Forward Diagonal

Outline Style: Solid

Outline Color: Red

Outline Thickness: 4 px

Annotation Layer Settings

Visibility:

Transparency: 0%

Clear All Annotations | Stop Editing

Click on an annotation to edit

Scale: 1 : 36,112
Latitude: 37.9636, Longitude: -76.8688

National Geographic, Esri, Garmin, HERE, UNEP-WCMC, USGS, NASA, ESA, METI, NRC...



NHDE Training Sessions

- Held virtually every two months
 - Next session Wednesday, March 23 from 1-3pm
- Option for one-on-one training and discussion sessions to discuss tribal goals and provide training on NHDE, have conducted these with representatives from the Rappahannock Tribe, the Chickahominy Tribe, and the Chickahominy Tribe-Eastern Division to discuss tribal goals
 - Contact Tyler.Meador@dcr.virginia.gov for more information