

Native Warm Season Grasses for Forage: Species and Cultivars and their Adaptation Across Virginia

Species	Name	Origin	Adaptability			Availability
	Cultivar / or Germplasm	State	Region Mountains (MTS) Piedmont (P) Coastal Plain (CP)	Special Characteristics	Hardiness Zone	Known Commercial Vendors
Switchgrass	Cave-in-Rock	IL	MTS, P	Upland type, forage quality, grazing persistence	4b – 6b	A, AI, E, J, O, R, Sh, Sr, W
Switchgrass	Shawnee	IL	MTS, P	Upland type, selected for forage quality	4b – 6b	E, O
Switchgrass	Carthage	NC	MTS, P, CP	Upland type, best adapted to coastal plain	6a – 8b	A, E
Switchgrass	Alamo	TX	P, CP	<u>Lowland</u> type	7a – 10b	A, B, C, E, J, K, O, P, R, Sh, Sr, T
Switchgrass	Kanlow	KS	MTS, P, CP	<u>Lowland</u> type	5a – 8b	E, J, O, R, Sh, Sr
Eastern Gamagrass	Verl	Triploid	MTS, P	Excellent forage production	5a – 7a	J
Eastern Gamagrass	Highlander	TN	MTS, P, CP	Adapted to humid SE	6b – 8a	R
Eastern Gamagrass	Iuka	(AR,OK TX)	MTS, P, CP	Widespread adaptation	6a – 8a	G, J
Big Bluestem	Niagara	NY	MTS, P, CP	Adapted to humid east	4a – 7b	E
Big Bluestem	Earl	TX	P, CP	Long growing season	7a – 10b	T
Big Bluestem	Suther	NC	MTS, P, CP	Local ecotype	6b – 8a	A, E
Little Bluestem	Cimarron	OK/KS	MTS, P, CP	Imp. forage production	4b – 7a	A, B, J, R, Sh, Sr
Little Bluestem	Suther	NC	P, CP ¹	Local ecotype	7b	E
Indiangrass	Americus	GA	P, CP	Adapted to humid SE	7b -8b	Ga
Indiangrass	Suther	NC	P, CP ¹	Local ecotype	7b	E, Ga
Indiangrass	Cheyenne	OK	MTS, P	Earliest release	5b – 7b	A, C, J, K, R, Sh, Sr

Seed Vendors

<p>A = Adams Briscoe Seed Company 325 East Second Street Jackson, GA 30223 Phone: 770-775-7826 Fax: 770-775-7122 http://www.abseed.com abseed@juno.com</p>	<p>Al = Albert Lea Seed Company 1414 West Main Street P.O. Box 127 Albert Lea, MN 56007 Phone: 800-352-5247 http://www.alseed.com</p>	<p>B = Bamert Seed Company 1897 CR 1018 Muleshoe, TX 7347 Phone: 800-262-9892 http://www.bamertseed.com natives@bamertseed.com</p>	<p>C = Curtis & Curtis Star Route Box 8A Clovis, NM 88101 Phone: 575-762-4759 Fax: 575-763-4213 http://www.curtisseed.com seed@curtisseed.com</p>
<p>E = Ernst Seeds, 8884 Mercer Pike Meadville, PA 16335 Phone: 814-336-2404 Fax: 814-336-5191 http://www.ernstseed.com sales@ernstseed.com</p>	<p>G = Gamagrass Seed Company 70225 656 Avenue Falls City, NE 68355 Phone: 402-245-5928 http://www.gamagrass.com info@gamagrass.com</p>	<p>Ga = Garrett Wildflower Seed Farm 1591 Cleveland Road Smithfield, NC 27577 Phone: 919-989-3031 Fax: 919-989-3041 garrettseed@mindspring.com</p>	<p>H = Hamilton Seed Outpost 16786 Brown Road Elk Creek, MO 65464 Phone: 417-967-2190 Fax: 617-967-5934 http://hamiltonseed.com natives@hamiltonnativeoutpost.com</p>
<p>J = Johnston Seed Company P.O. Box 1392 Enid, OK 73702 Phone: 800-375-4613 http://www.johnstonseed.com johnseed@johnsonseed.com</p>	<p>K = Douglas King Seed P.O. Box 200320 San Antonio, TX 78220-0320 Phone: 888-357-3337 Fax: 20-661-8972 http://www.dkseeds.com sales@dkseeds.com</p>	<p>N = Native American Seed 3791 U.S. Highway 377 Junction, TX 76849 Phone: 800-728-4043 Fax: 800-728-3943 http://www.seedsources.com info@seedsources.com</p>	<p>O = Osenbaugh's Prairie Seed Farms 11009 542nd Street Lucas, IA 50151 Phone: 641-766-6792 Fax: 641-766-6795 http://www.PrairieSeedFarms.com info@PrairieSeedFarms.com</p>
<p>P = Pogue Seed P.O. Drawer 389 Kenedy, TX 78119 Phone: 830-583-3456 Fax: 830-583-9840 http://www.pogueagri.com keith@pogueagri.com</p>	<p>R = Roundstone Seed 9764 Raider Road Upton, KY 42784 Phone: 270-531-3034 Fax: 270-531-3036 http://www.roundstoneseed.com sales@roundstoneseed.com</p>	<p>Sh = Sharp Seed 1005 South Sycamore Healy, KS 67850 Phone: 800-462-8483 Fax: 620-398-2220 http://www.sharpseed.com buffalo@sharpseed.com</p>	<p>Sr = Star Seeds P.O. Box 228 Osborne, KS 67473 Phone: 800-782-7311 Fax: 785-346-2479 http://gostarseed.com info@gostarseed.com</p>
<p>St = Stock Seed Farms 28008 Mill Road Murdock, NE 68407 Phone: 800-759-1520 Fax: 402-867-2442 http://www.stockseed.com prairie@stockseed.com</p>	<p>T = Turner Seed 221 County Road 151 Breckenridge, TX 76424 Phone: 254-559-5860 Fax: 254-559-5024 http://www.turnerseed.com turnerseed@turnerseed.com</p>	<p>W = Wetsel, Inc. P.O. Box 791 Harrisonburg, VA 22803 Phone: 800-572-4018 Fax: 888-434-4894 http://www.wetsel.com msteiner@wetsel.com</p>	

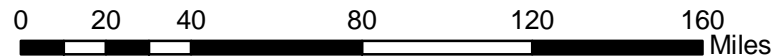
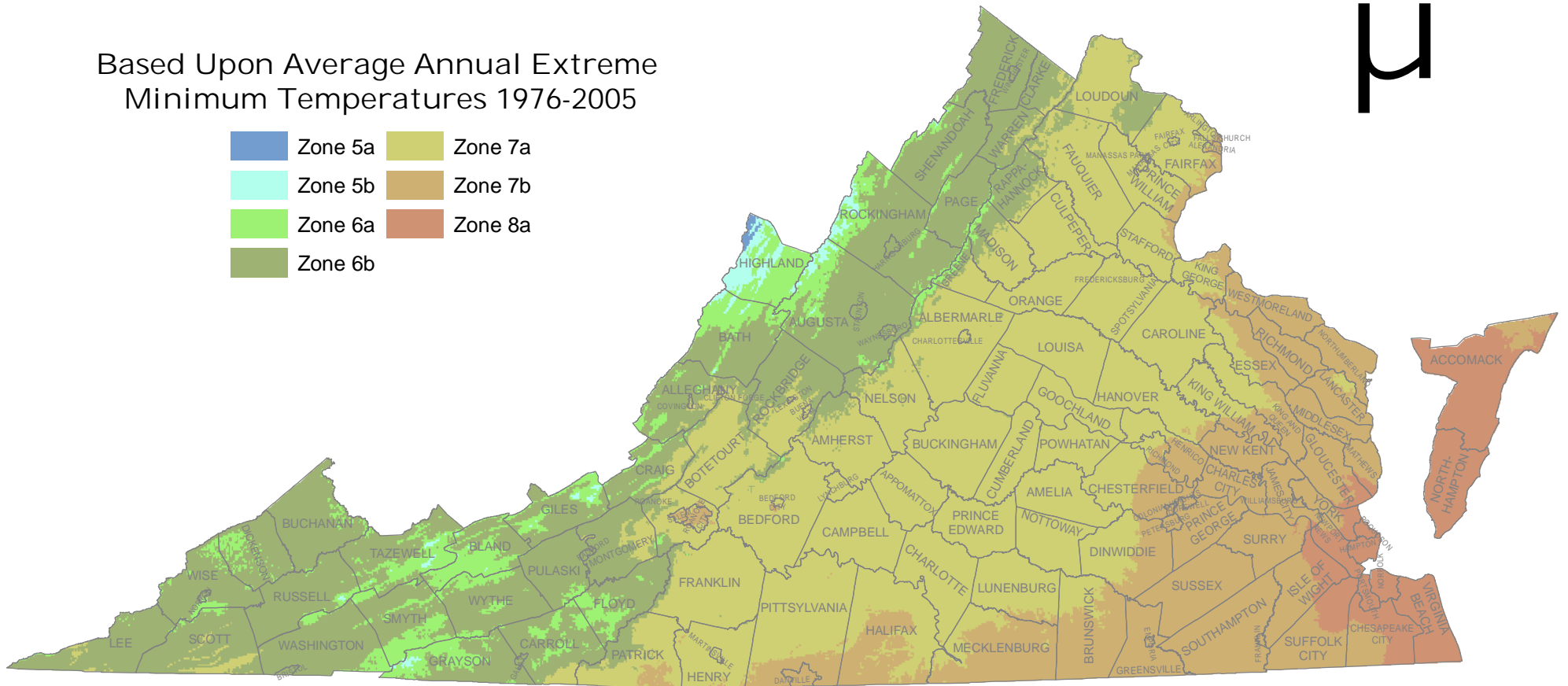
Source: Adapted from Bob Glennon's *Sources of Native Grass Cultivars, Germplasm, and Ecotypes and Their Adaptations for Virginia*, Nov 2017.



PLANT HARDINESS ZONES of VIRGINIA

Based Upon Average Annual Extreme Minimum Temperatures 1976-2005

- Zone 5a
- Zone 6a
- Zone 6b
- Zone 7a
- Zone 7b
- Zone 8a



THIS MAP WAS PRODUCED AT THE VIRGINIA STATE OFFICE OF THE USDA NATURAL RESOURCES CONSERVATION SERVICE IN RICHMOND, VIRGINIA 02/24/2012 (SEG). COUNTY BOUNDARIES WERE DERIVED FROM 100K DLGS. THE PROJECTED COORDINATE SYSTEM IS NAD83, UTM, ZONE 17N. 2012 PLANT HARDINESS ZONE DATA WAS DOWNLOADED FROM A USDA AGRICULTURAL RESEARCH SERVICE WEB SITE AT <https://planhardiness.ars.usda.gov/PHZMWeb/DownloadsLgoin.aspx> THE DATA WERE JOINTLY DEVELOPED BY USDA'S AGRICULTURAL RESEARCH SERVICE (ARS) AND OREGON STATE UNIVERSITY'S (OSU) PRISM CLIMATE GROUP.

*The U.S. Department of Agriculture (USDA) prohibits discrimination in all of its programs and activities on the basis of race, color, national origin, age, disability, and where applicable, sex, marital status, familial status, parental status, religion, sexual orientation, political beliefs, genetic information, reprisal, or because all or part of an individual's income is derived from any public assistance program. (Not all prohibited bases apply to all programs.) Persons with disabilities who require alternative means for communication of program information (Braille, large print, audiotape, etc.) should contact USDA's TARGET Center at (202) 720-2600 (voice and TDD). To file a complaint of discrimination, write to USDA, Assistant Secretary for Civil Rights, Office of the Assistant Secretary for Civil Rights, 1400 Independence Avenue, S.W., Stop 9410, Washington, DC 20250-9410, or call toll-free at (866) 632-9992 (English) or (800) 877-8339 (TDD) or (866) 377-8642 (English Federal-relay) or (800) 845-6136 (Spanish Federal-relay). USDA is an equal opportunity provider and employer.