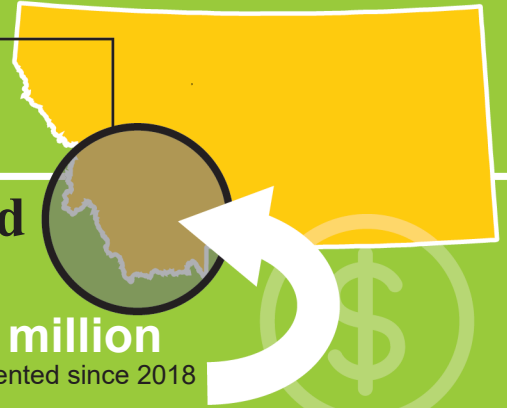


# Southwest Montana Sagebrush Partnership

**Locally Led**  
 Sagebrush country in southwestern Montana is home to multi-generational family ranches intermixed with public land that supports vital recreational economies, all anchored by this native landscape and the ecological processes it supports.



## Partnership Based

Ranchers and small business owners, together with the State of Montana and federal agencies, local conservation districts, and non-governmental organizations began a series of coordinated sagebrush restoration and rangeland health projects in the region.



## Leveraged Funding

**Over \$1.8 million** in projects implemented since 2018

**Over \$1.5 million** in competitive research grants applied to assess the effects of conservation actions



## What was accomplished?

### Job Creation

**4 new small contractors** engaged in restoration work, with the opportunity to work year-round.



**3 new start-up companies** supported by this area's partnership conservation work.

### Locally based Youth Employment Program

created in 2021. This program will serve as a Conservation Corps made of local youth and young adults who will have an opportunity to make an hourly wage and contribute to their community and households.

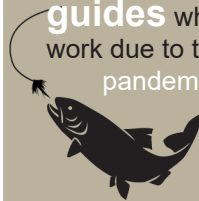


### Innovation

Southwest Montana Sagebrush Partnership is working with the **wood products** industry to pilot innovative ways to improve utilization of small diameter materials and biomass.



Partnership Coordinator Sean Claffey helped put together a field crew comprised of unemployed **fishing guides** who were out of work due to the pandemic



### Conservation

**50 miles** of fencing modified to become wildlife-friendly



**48,000 acres** under permanent conservation easement since 2018



**22,831 acres** of conifer expansion removed to restore habitat diversity and forage opportunities. This includes over **10,000 acres** of prescribed fire across private and public lands.

**7.6 miles** of wet meadow habitat preserved/restored and



**868 structures** installed to slow water and preserve wet meadow habitats for natural storage



**Building Common Ground by Working Together: Ranchers, land managers, hunters, anglers, and other outdoor recreation groups all benefit when the land is healthy.**

Montana **Natural Resources Conservation Service**

[nrms.usda.gov/](http://nrms.usda.gov/)