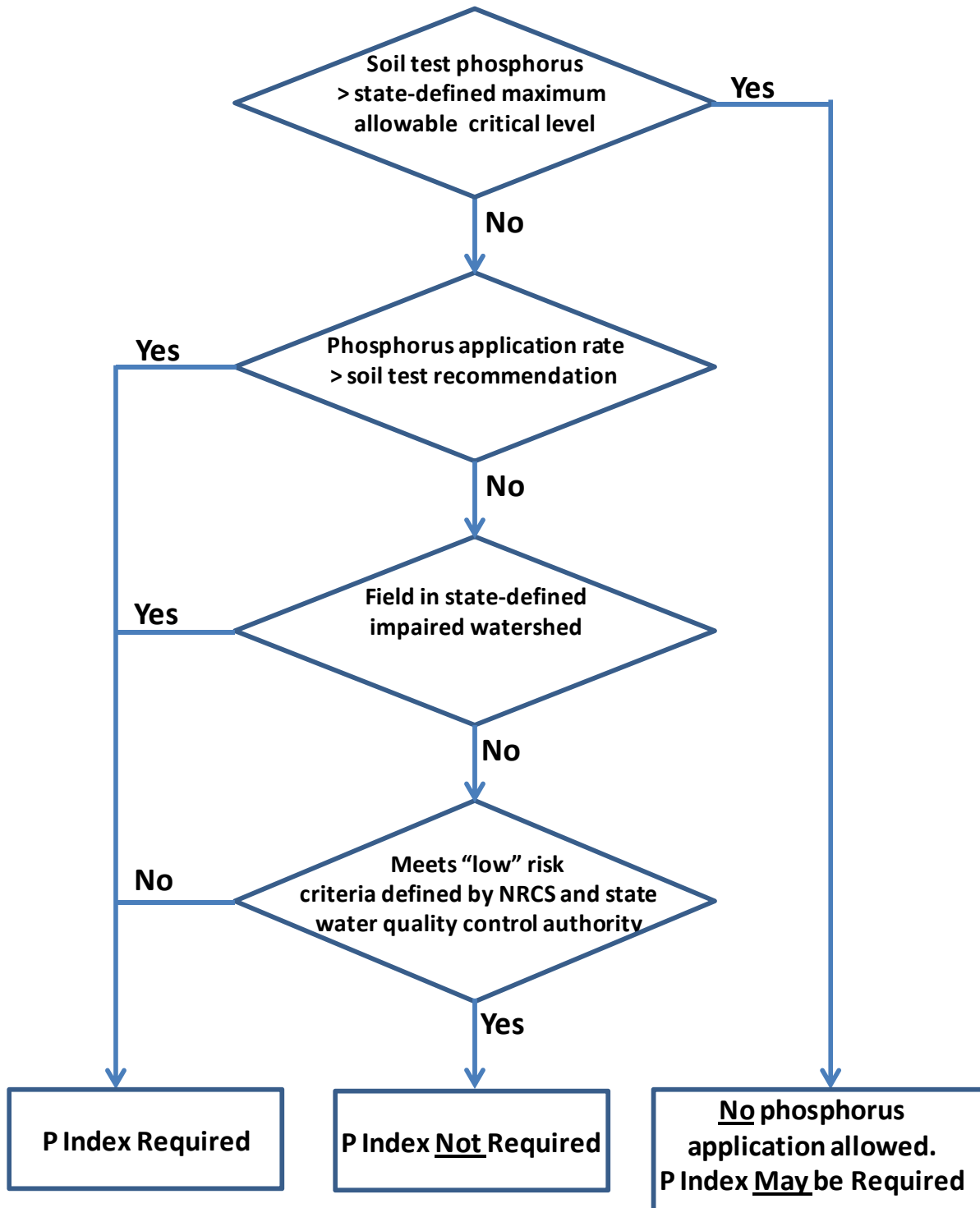
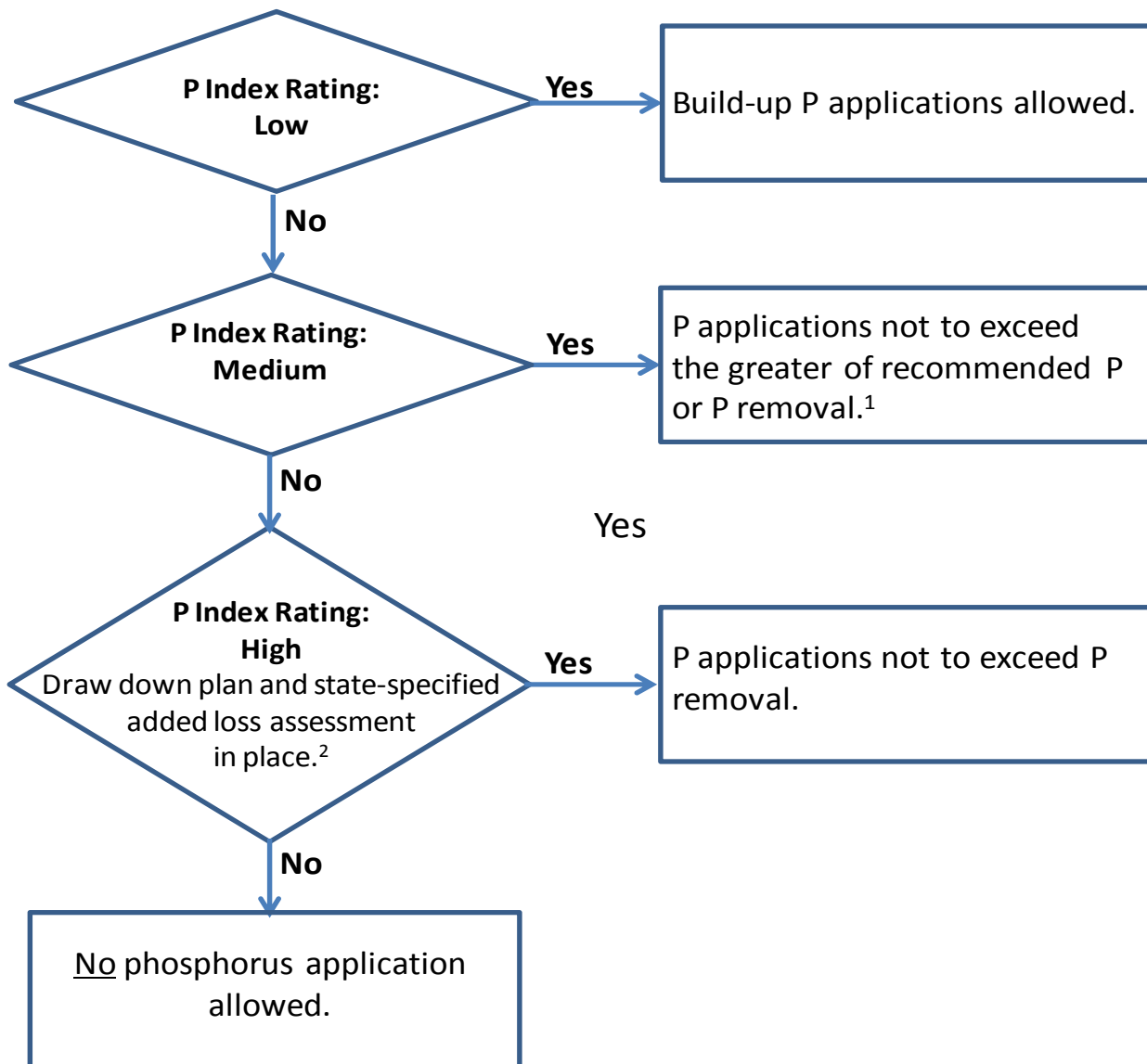


When must a P Index be used?



Interpreting P Index (1/2012 NI-Part 302)



¹ Actual wording does not reflect ability to apply up to recommended P.

² The National 590 requires that a site assessment for nutrients and soil loss be conducted to determine if mitigation practices are required to protect water quality.

Interpreting the role of the P Index in the December 2011 NRCS 590 Standard

Developed by SERA-17, reviewed by NRCS.

Scenario Matrix: Interpreting the Results of the P Index

Scenario number	Soil Test Recommended P rate	Source of P	Proposed Criteria for Application			P rate exceeds recommended?	P Index result	Proposed rate allowed?	Comments
			Annual N	Annual P	Multi-year ¹ P*				
1	> crop removal	Any	≤	=	<	No	Low Moderate High	Yes Yes No	Proposed rate > P removal.
2	> crop removal	Any	≤	>	=	No	Low Moderate High	Yes Yes/No No	See notes ² . Proposed rate > P removal.
3	> crop removal	Any	≤	>	>	Yes	Low Moderate High	Yes No No	Proposed rate > P removal. Proposed rate > P removal.
4	crop removal	Any	≤	=	<	No	Low Moderate High	Yes Yes Yes	
5	crop removal	Any	≤	>	=	No	Low Moderate High	Yes Yes/No Yes/No	See notes ² . See notes ² .
6	crop removal	Any	≤	>	>	No	Low Moderate High	Yes No No	Proposed rate > P removal. Proposed rate > P removal.
7	0 P	Any	≤	=	<	Yes	Low Moderate High	Yes Yes Yes	
8	0 P	Any	≤	>	=	No	Low Moderate High	Yes Yes/No Yes/No	See notes ² . See notes ² .
9	0 P	Any	≤	>	>	No	Low Moderate High	Yes No No	Proposed rate > P removal. Proposed rate > P removal.

¹ Multi-year P typically based on three to five years of P application, depending on state-specified limits.

² States vary in how multi-year P limits are interpreted and implemented.