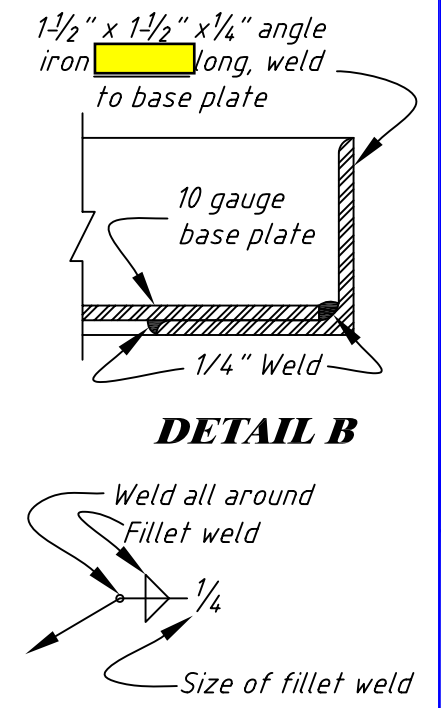


TABLE OF QUANTITIES

ITEM	UNIT	QUANTITY
\square " Dia. CMP Riser \square Gauge	L.F.	\square
\square " Dia. Helical CMP (Drawdown)	L.F.	\square
\square " Dia. Helical CMP (Outlet)	L.F.	\square
$1\frac{1}{4}$ " x $1\frac{1}{4}$ " x $\frac{3}{16}$ " Angle Iron	L.F.	\square
$1\frac{1}{2}$ " x $1\frac{1}{2}$ " x $\frac{1}{4}$ " Angle Iron	L.F.	\square
C 3" x 5" Channel Iron	L.F.	\square
Pre-Molded Neoprene Gasket	L.F.	\square
$\frac{3}{16}$ " Metal Plate w/Hinges, Handles, & Hasp	SQ. FT.	\square
10 Gauge Metal Base Plate	SQ. FT.	\square
Timber Check Boards (2"x12")	BD. FT.	\square

- NOTES:**
- All metal not galvanized shall be painted
 - Check boards shall be wood plank construction, Douglas Fir grade (or equivalent).
 - All welds and heat affected areas on galvanized metal shall be treated in accordance with specifications.
 - Fill all voids produced by corrugations between channel iron and CMP riser with sufficient amount of premolded neoprene gasket or asphalt mastic to produce a watertight seal.
 - A filler strip may be used to insure a watertight seal between the riser and the helical pipes.



WELD SYMBOLS

Note: Weld symbol placed above line indicates weld is on opposite side of joint to which arrow points. Weld symbol below line indicates weld is on side of joint to which arrow points.

Date: \square

Designed: \square

Drawn: \square

Checked: \square

Approved: \square

Cooperator: \square CMP Water Control Structure \square County, Wyoming

USDA NRCS
Natural Resources Conservation Service

File No. \square

Drawing No. 587-01

Sheet \square of \square