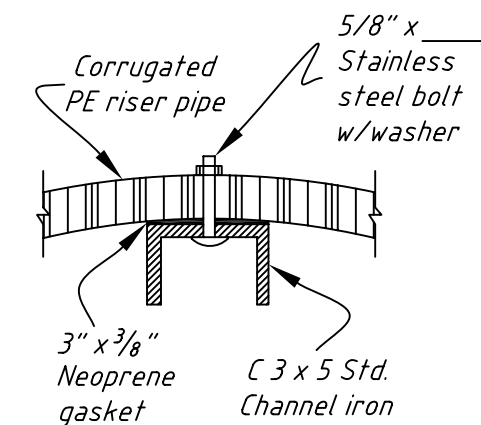


TABLE OF QUANTITIES

ITEM	UNIT	QUANTITY
\square " Dia. Corrugated PE Riser	L.F.	\square
\square " Dia. Corrugated PE Pipe Inlet (Drawdown)	L.F.	\square
\square " Dia. Corrugated PE Pipe (Outlet)	L.F.	\square
Concrete	C.Y.	\square
Reinforcing Steel - Concrete Base	LBS.	\square
Welded Wire Trash Guard (6" x 6")	L.F.	\square
1-1/4" x 1-1/4" x 3/16" Angle Iron	L.F.	\square
C 3" x 5" Channel Iron	L.F.	\square
Pre-Molded Neoprene Gasket	L.F.	\square
3/16" Metal Plate w/Hinges, Handles, & Hasp	SQ. FT.	\square
10 Gauge Metal Base Plate	SQ. FT.	\square
Timber Check Boards (2"x12")	BD. FT.	\square



NOTE:
Install bolts @ 12" C to C

DETAIL A

NOTES:

1. Check boards shall be wood plank construction, Douglas Fir grade (or equivalent).
2. All welds and heat affected areas on galvanized metal shall be treated in accordance with specifications.
3. Premolded neoprene gasket or asphalt mastic shall be used to produce a watertight seal between the C3 x 5 channel iron and the corrugated PE riser pipe.
4. Minimum cover around reinforcing steel in concrete base is 3".
5. Granular backfill shall be used around the corrugated PE riser pipe.
6. All non-galvanized metal shall be painted.

Date: \square

Designed: \square

Drawn: \square

Checked: \square

Approved: \square

Cooperator: \square County Conservation District

County: Wyoming

USDA NRCS
Natural Resources Conservation Service

Corrugated PE Water Control Structure

File No. \square

Drawing No. 587-04

Sheet \square of \square