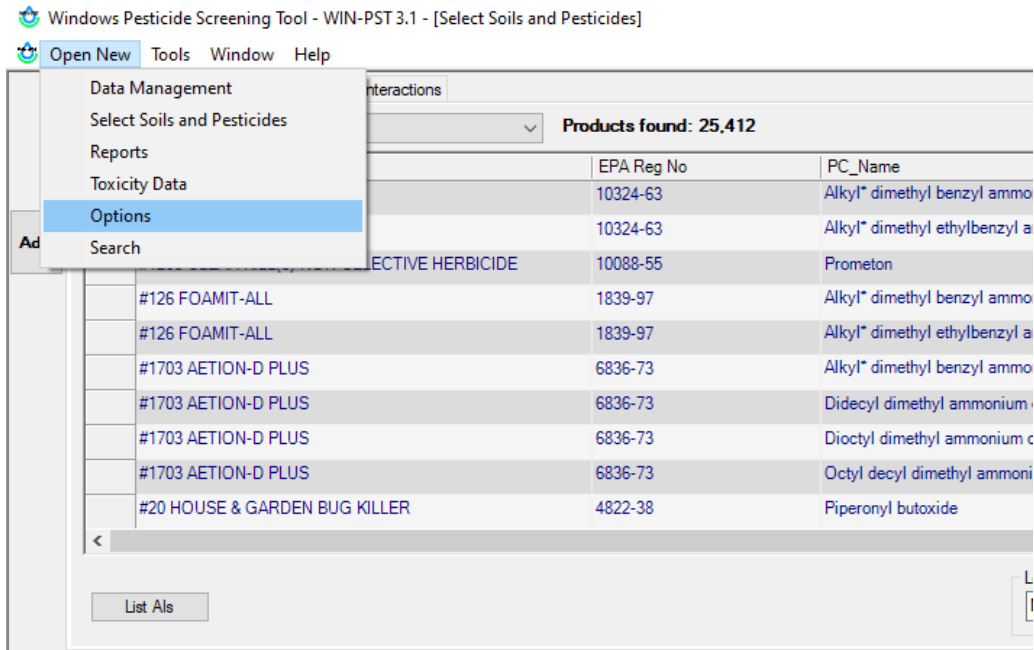
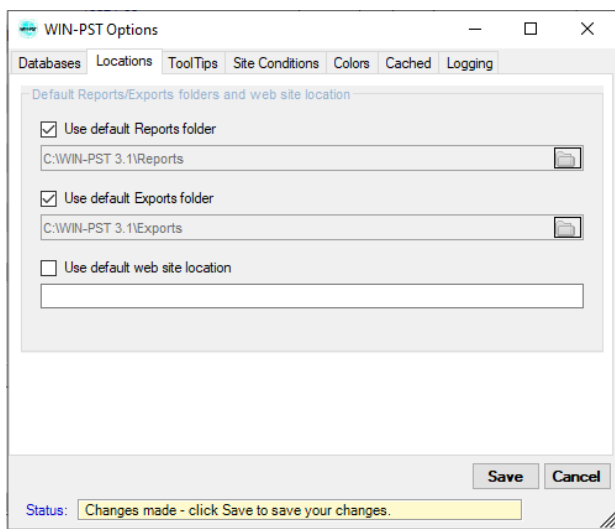


## Instructions for fixing automatic pesticide update notifications in WIN-PST:

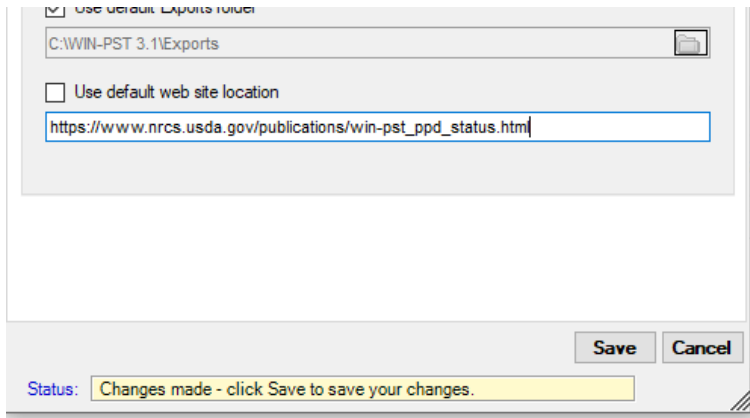
- 1) Start Windows Pesticide Screening Tool (WIN-PST)
- 2) Open New -> Options



- 3) Locations tab -> Uncheck "Use default web site location"



- 4) Copy and past the new address [https://www.nrcs.usda.gov/publications/win-pst\\_ppd\\_status.html](https://www.nrcs.usda.gov/publications/win-pst_ppd_status.html) into the space provided and select 'Save' and then 'Close'.



Done! WIN-PST will now automatically check to see if a new pesticide update is available using the new web address.