

Common Enhancement Activities of the Conservation Stewardship Program (CSP)

For Rangeland and Pastureland in South Dakota

The **Conservation Stewardship Program** (CSP) of the 2008 Farm Bill is a voluntary program of the USDA Natural Resources Conservation Service (NRCS). The CSP supports producers as they implement a conservation stewardship plan that addresses resource concerns in a comprehensive manner by installing and adopting additional conservation activities and improving, maintaining, and managing existing activities.

The CSP pays participants for conservation performance—the higher the performance, the higher the payment. Producers get credit both for “standard” conservation measures they have already implemented and for new measures they agree to add.

Is CSP Right for me?

Download and fill out the Conservation Stewardship Self-Screening Checklist at:

http://www.nrcs.usda.gov/Internet/FSE_DOCUMENTS/stelprdb1046173.pdf.

Try it. You don't have to turn it in to NRCS; it's there to help you determine if CSP is right for you. If you have questions regarding the Checklist, please contact your local NRCS office. If you are willing to incorporate additional appropriate activities, you should consider applying for CSP.

This fact sheet shows a sample of common enhancement activities being implemented on rangeland and pastureland in South Dakota. As a producer, if you have already implemented the enhancement activities, then, those may not be eligible for payment under CSP.

However, 45 enhancement activities are available on grazingland. If you are willing to implement new measures appropriate for your operation, you could receive a payment under CSP. For details, please consult the CSP activity job sheets, your local NRCS staff or visit the South Dakota NRCS web page for the CSP.

AIR - Air Quality Enhancement
 ANM - Animal Quality Enhancement
 ENR - Energy Enhancement
 PLT - Plant Enhancement

SQL - Soil Quality Enhancement
 WQL - Water Quality Enhancement
 WQT - Water Quantity Enhancement



ANM03 – Incorporate Native Grasses and/or Legumes to 15 Percent or more of Herbage Dry Matter Productivity.



ANM11 – Patch-burning to enhance wildlife habitat



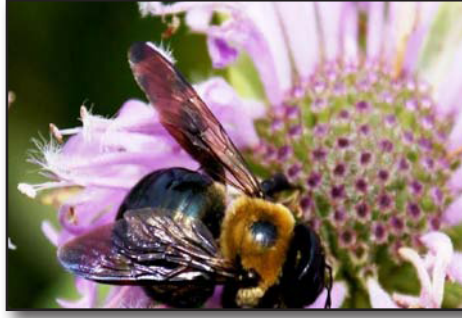
ANM09 – Grazing Management to Improve Wildlife Habitat.



ANM17 – Monitoring Nutritional Status of Livestock Using the NUTBAL PRO System.



ANM38 – Retrofit Watering Facility for Wildlife Escape and to Enhance Access for Bats and Bird Species



PLT15 – Establish Pollinator Habitat and/or Beneficial Insect Habitat.



WQL19 – Transition to ORGANIC Grazing Systems.



ANM21 – Prairie Restoration for Grazing and Wildlife Habitat.



PLT02 – Monitor Key Grazing Areas to Improve Grazing Management.



WQL18 – Non-Chemical Pest Management for Livestock.



ANM26 – Managing Calving to Coincide with Forage Availability.



PLT16 – Intensive Management of Rotational Grazing.

And, there are many more! Visit your local NRCS office or go online to use the following resources:

[Conservation Stewardship Program national web page](#)

[2014 Ranking Period One CSP Activity List](#)

[National Web Page for CSP Enhancements Activity Job Sheets](#)



ANM27 – Wildlife Friendly Fencing.



WQL03 – Rotation of Supplement and Feeding Areas.