



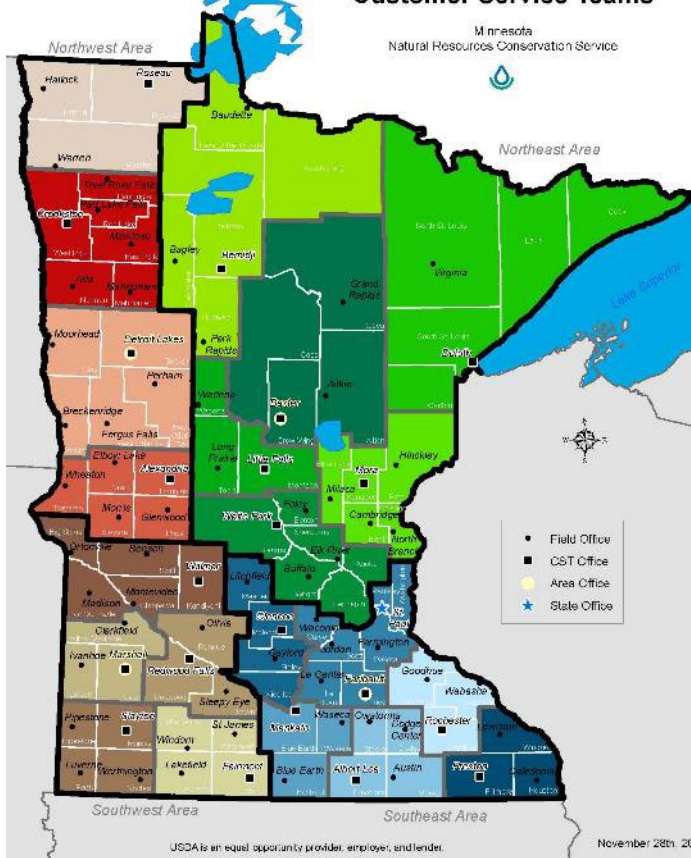
U.S. Department of Agriculture
Natural Resources Conservation Service

2018 Farm Bill Forestry Assistance

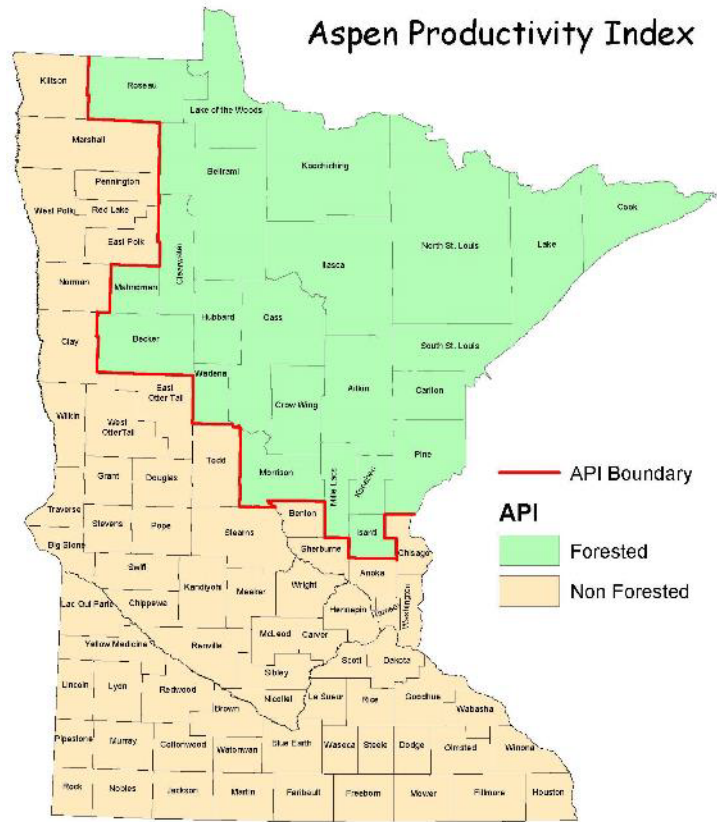
5 Years of MN Forestry Assistance

USDA is an equal opportunity provider, employer, and lender.

Customer Service Teams



Aspen Productivity Index



Laurentian Mixed Forest

Eastern Broadleaf Forest

Prairie Parkland

NRCS Customer Service Teams

Minnesota's Landscape



The Delivery System - 85 Years in Minnesota

▶ NRCS

- ▶ 74 Field offices
- ▶ 224 Field office staff
(and counting...)
- ▶ 4 New foresters
started in June in NE
Minnesota NRCS!
(for a total of five in Area NE)

▶ SWCD

- ▶ 88 districts
- ▶ 460 staff

FARM BILL PRACTICES APPLIED 2018-2023 (June)

Practice and Enhancements	Number of Contracts	Amount	Program Dollars Spent
Forest Management Plans (106)	153	21,074 ac	\$ 325,976
Brush Management (314)	101	1,182 ac	\$ 311,483
Windbreak/Shelterbelt (380)	112	276,217 ft	\$ 153,201
Woody Residue Treatment (384)	157	1,667 ac	\$ 1,019,665
Riparian Forest Buffer (391)	19	34 ac	\$ 86,519
Tree-Shrub Site Prep (490)	209	631 ac	\$ 55,042
Tree-Shrub Establishment (612)	631	2,297 ac	\$ 1,185,369
Early Successional Habitat Development/Management (647)	231	6,814 ac	\$ 2,104,739
Forest Trails and Landings (655)	17	149,232 ft	\$ 66,809
Tree-Shrub Pruning (660)	18	157 ac	\$ 18,820
Forest Stand Improvement (666)	367	12,340 ac	\$ 2,013,221
TOTAL	2,015		\$ 7,340,844

Arrowhead Forestry Partners

▶ \$2,115,875.00



**National
Wild Turkey
Federation**



**AMERICAN BIRD
CONSERVANCY**



**CAMP RIPLEY
SENTINEL LANDSCAPE**



and more

Climate Change Mitigation Practice Categories	Code	Conservation Practice Standard Name ²¹ (units)	CSP Enhancement Code	Conservation Stewardship Program (CSP) Bundle and Enhancement Activity
Agroforestry, Forestry and Upland Wildlife Habitat	311	Alley Cropping (acres)	None Available	None Available
	342	Critical Area Planting (acres)		
	379	Forest Farming (acres)		
	380	Windbreaks/Shelterbelt Establishment and Renovation (feet)		
	381	Silvopasture (acres)	E381A	Silvopasture to improve wildlife habitat
	390	Riparian Herbaceous Cover (acres)	E390A	Increase riparian herbaceous cover width for sediment and nutrient reduction
			E390B	Increase riparian herbaceous cover width to enhance wildlife habitat
	391	Riparian Forest Buffer (acres)	E391A	Increase riparian forest buffer width for sediment and nutrient reduction
			E391B	Increase stream shading for stream temperature reduction
			E391C	Increase riparian forest buffer width to enhance wildlife habitat
	420	Wildlife Habitat Planting (acres)*	E420A	Establish pollinator habitat*
			E420B	Establish monarch butterfly habitat*
	422	Hedgerow Planting (feet)	None Available	
	612	Tree/Shrub Establishment (acres)	E612B	Planting for high carbon sequestration rate
			E612C	Establishing tree/shrub species to restore native plant communities
			E612G	Tree/shrub planting for wildlife food
	645	Upland Wildlife Habitat Management (acres)	E645B	Manage existing shrub thickets to provide adequate shelter for wildlife
			E645C	Edge feathering for wildlife cover
	666	Forest Stand Improvement (acres)*	E666A	Maintaining and improving forest soil quality*
			E666D	Forest management to enhance understory vegetation*
			E666E	Reduce height of the forest understory to limit wildfire risk*
E666F			Reduce forest stand density to create open stand structure*	
E666H			Increase on-site carbon storage*	
E666I			Crop tree management for mast production*	
E666J			Facilitating oak forest regeneration*	
E666K			Creating structural diversity with patch openings*	
E666L			Forest Stand Improvement to rehabilitate degraded hardwood stands*	
E666P			Summer roosting habitat for native forest-dwelling bat species*	
E666R			Forest songbird habitat maintenance*	
E666S	Facilitating longleaf pine regeneration and establishment*			

Climate Smart Ag and Forestry

Conservation Practice Standard Overview

Contour Orchard and Other Perennial Crops (331)

The Contour Orchard and Other Perennial Crops Conservation Practice Standard calls for planting orchards, vineyards, or other perennial crops on or near the contour.

Practice Information

This practice is used when orchards, vineyards, or other perennial crops are established on sloping land. Planting on the contour conserves and protects soil, water, and related natural resources.

Conservation benefits may include but are not limited to:

- Reduce sheet and rill soil erosion
- Reduce transport of excessive sediment and other associated contaminants
- Improve water use efficiency with improved infiltration

The practice also benefits equipment operation and improves aesthetics.

Planting orchards and fruit areas on the contour generally requires the construction of



a bench or terrace to provide access to the growing trees or shrubs.

Common Associated Practices

Contour Orchard and Other Perennial Crops (331) is commonly applied with practices such as Access Road (560), Diversion (362), Grassed Waterway (412), Underground Outlet (620), and Conservation Cover (327).

For further information, contact your local NRCS field office.

What does forestry look like at NRCS?

NRCS Technical and Financial Assistance

[\(343\) NRCS Forestry Practices in Minnesota - YouTube](#)

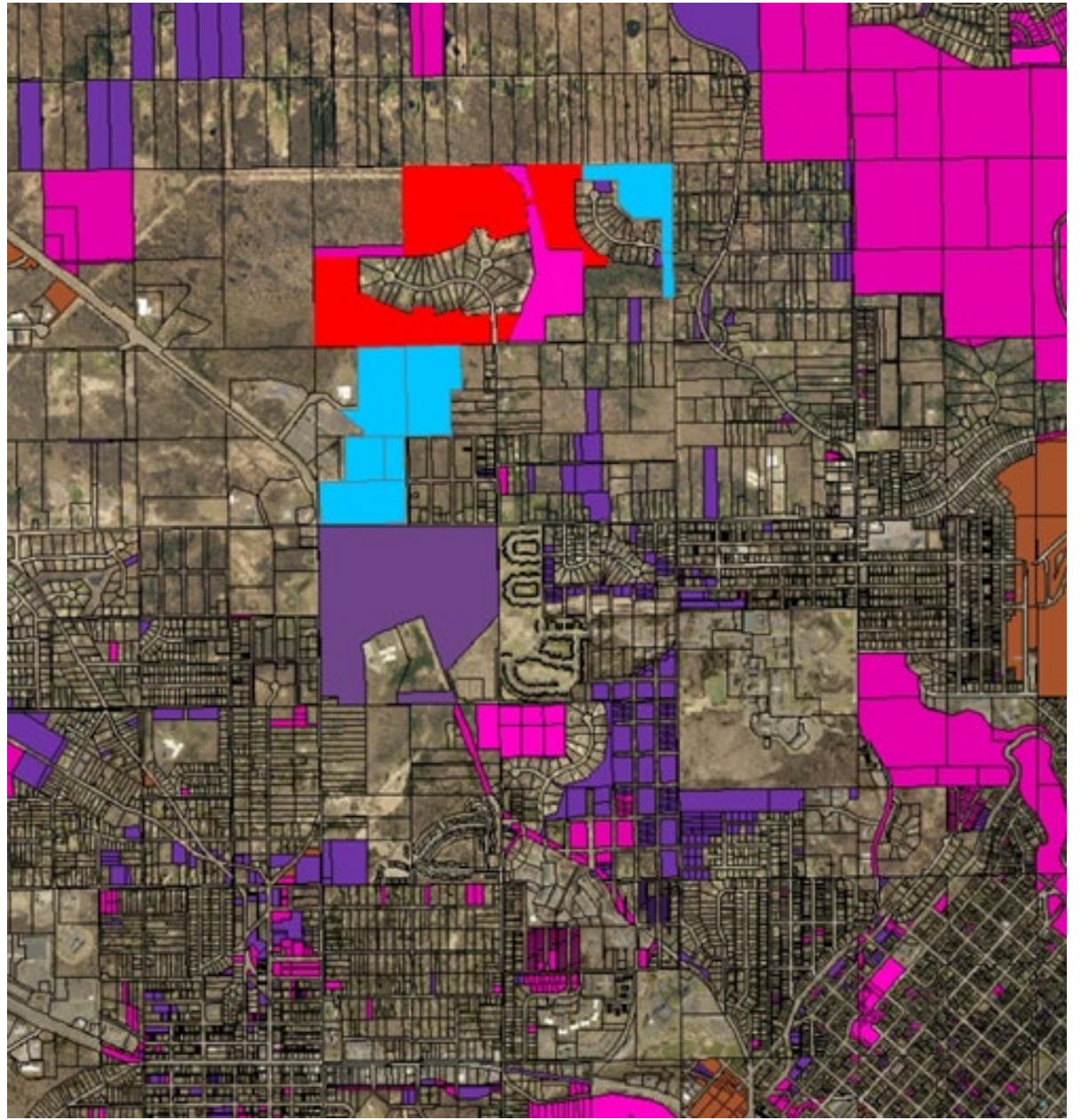
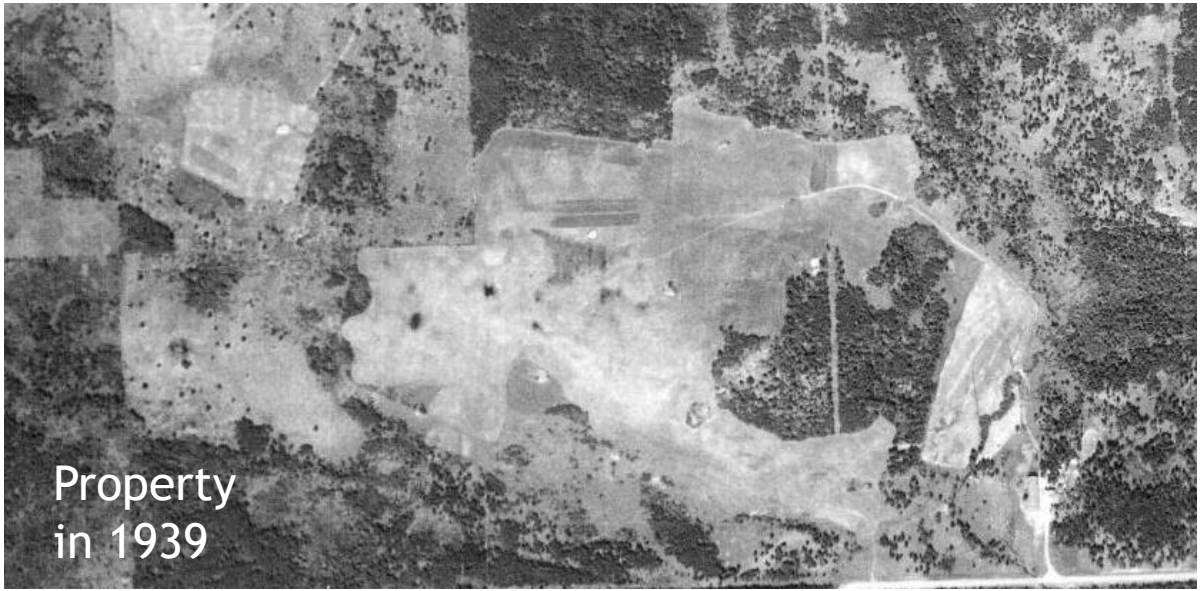
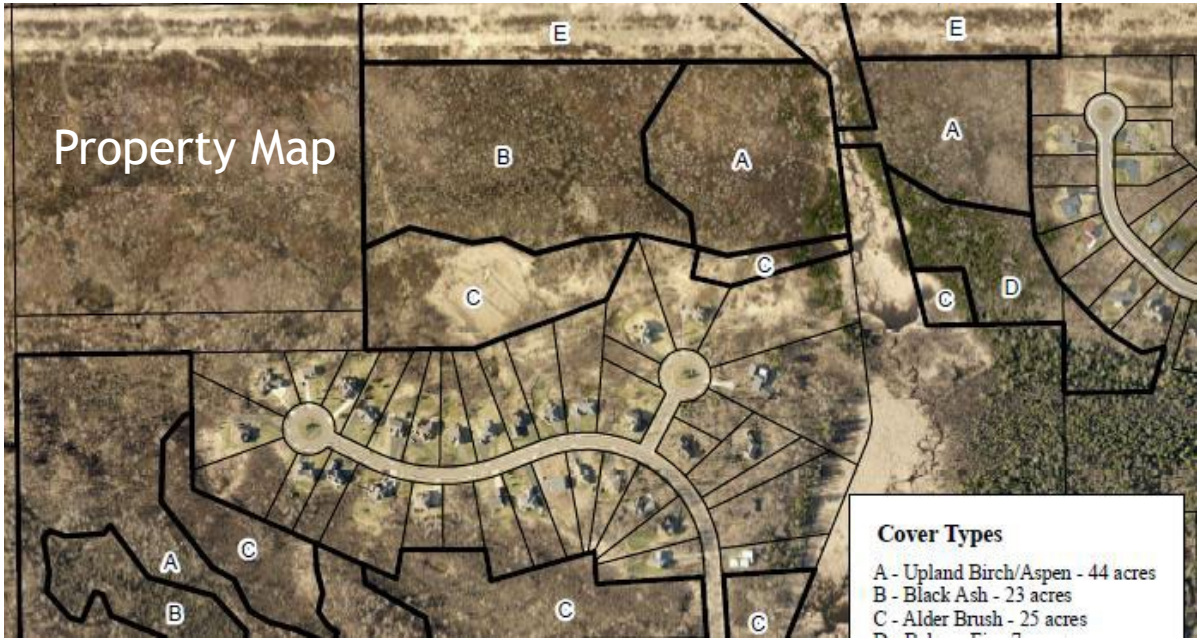






Forestry Success Stories

Experiences from field staff

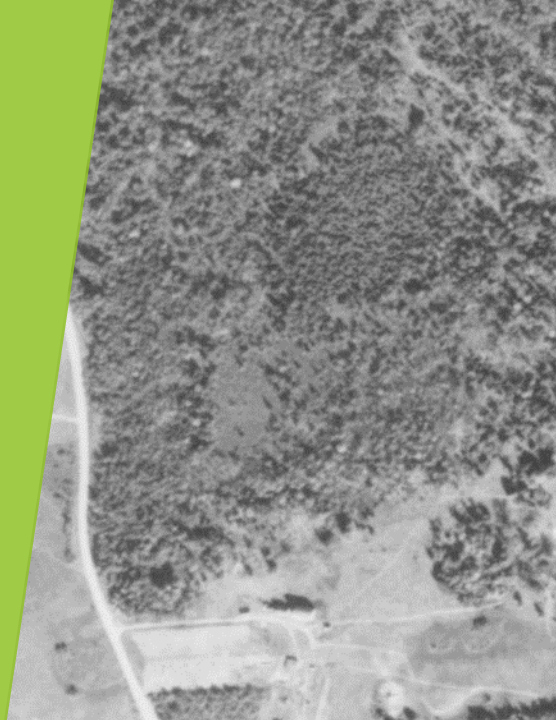




- 666 Forest Stand Improvement
- 384 Woody Residue Treatment
- 314 Brush Management
- 647 Early Successional Habitat

...and state cost-share for tree planting, enrollment in Sustainable Forest Incentive Act (SFIA - DNR), Minnesota Land Trust, City of Duluth trail maintenance.





- ▶ Forest Stand Improvement
 - ▶ Improve live crown ratio
 - ▶ Increase light
- ▶ Conservation Cover
 - ▶ Improve habitat for forest pollinators
 - ▶ Follow-up treatment for invasive species removal



Left: Brush Management

Center: Wildlife food plot, clover mix, multi-species benefit

Right: Early successional habitat development and retention for sharp-tailed grouse

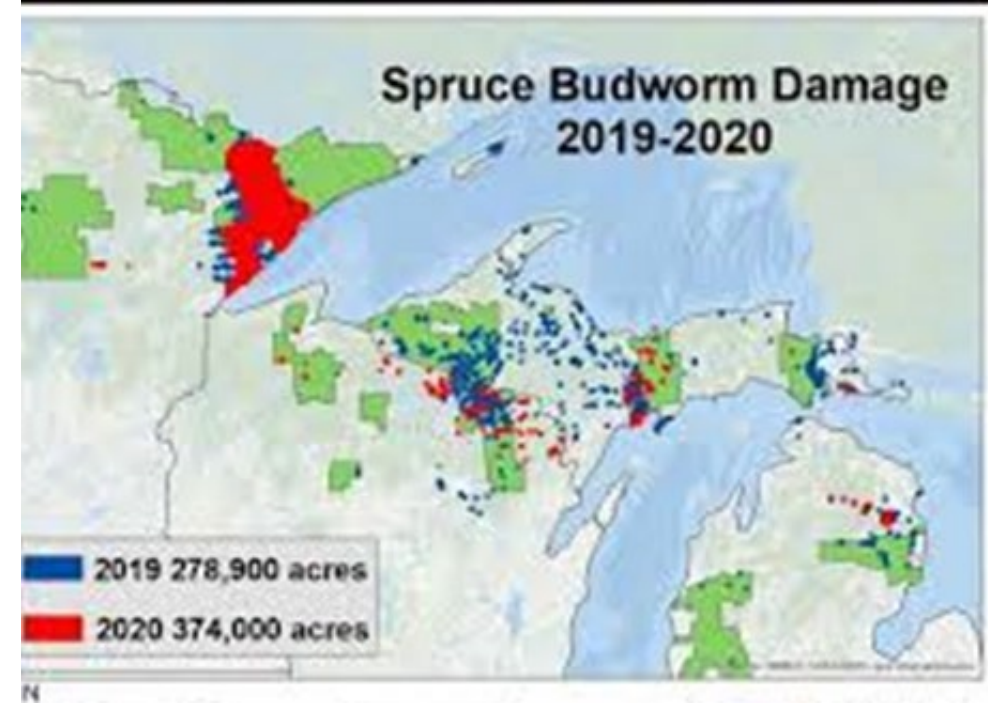


After



Forest Stand Improvement
Woody Residue Treatment

2-acre lakeshore project



Before



Final Notes

- ▶ No minimum or maximum property size
- ▶ No minimum or maximum project size
- ▶ Projects may overlap farmstead, pasture, cropland...
- ▶ Landowners wanting to start prior to contracts being obligated have the option of an Early Start Waiver
- ▶ Minnesota NRCS has invested more than **\$9.4 million in forestry** practices on private and Tribal land in the 2018 Farm Bill.

The background of the slide features a white central area with abstract green geometric shapes on the right and bottom edges. These shapes consist of overlapping triangles and polygons in various shades of green, ranging from light lime to dark forest green. The overall design is clean and modern.

NRCS

Helping People Help the Land